



submitted by Carroll Hackbart

In 1803, the United States purchased the Louisiana Territory from France. The government wanted to explore and understand this vast new land — its rivers, soils, Native tribes, plants, animals, and whether it was suitable for farming.

In 1820, U.S. Army officer Stephen H. Long led an expedition across the Great Plains. After traveling through what is now Nebraska, Kansas, Colorado, Oklahoma, and the Dakotas, he labeled the region the “Great American Desert.”

Why? Because what he saw looked harsh and unforgiving, including few trees, long distances between reliable water sources, dry air, dust, and scarce water.

To eastern Americans used to forests and steady rainfall, the Plains appeared nearly useless. That label “desert” slowed settlement for decades. But history would prove that assessment wrong.

Crossing the “Desert”

Beginning around 1840, wagon trains organized in eastern Kansas and Nebraska along the Missouri River

for the 2,000-mile journey to Oregon. Between 1840 and 1855, hundreds of thousands headed west:

- ~ 300,000–400,000+ total emigrants
- ~ 80,000 settled in Oregon
- ~ 70,000+ Mormon pioneers turned toward Utah
- ~ 250,000 broke off toward California during the

Gold Rush

Jumping-off towns like Fort Leavenworth and Atchison in Kansas, and Omaha and Nebraska City in Nebraska, became staging points for the journey. They were told they must first cross the “Great American Desert.” And so they did. They found endless prairie grass, few trees for firewood, water scarcity, and buffalo chips used for cooking fuel.

It was not a poor man’s gamble. The trip cost \$700 to \$1,200, equivalent to tens of thousands of dollars today. Families had to buy a covered wagon, 4 to 6 oxen, food for 4 to 6 months, tools, and spare livestock.

There was no Walmart ahead. No hospital. No hardware stores along the way. When they reached

See DESERT, page 2

DESERT, from page 1

Oregon, there was no Garden of Eden waiting. It was often fall. They had to build shelter and survive winter before planting crops in spring.

When they left on the 2,000-mile trip to Oregon, Oregon was not yet officially part of the United States. They gambled everything without legal assurance the land would be theirs. In 1846, the Oregon Treaty set the boundary at the 49th parallel, now the U.S./Canada border. In 1848, Oregon became a U.S. territory.

The Irony of the Plains, the desert becomes “America’s Breadbasket”

After the Civil War, new studies told a different story. The Plains contained deep mollisol soils, among the most fertile in the world; adequate rainfall in eastern Kansas; excellent wheat potential; and ideal open range for cattle.

The Homestead Act opened settlement. Railroads marketed Kansas worldwide. By the 1870s and 1890s, Kansas became known as the Wheat Capital of the World. The land once

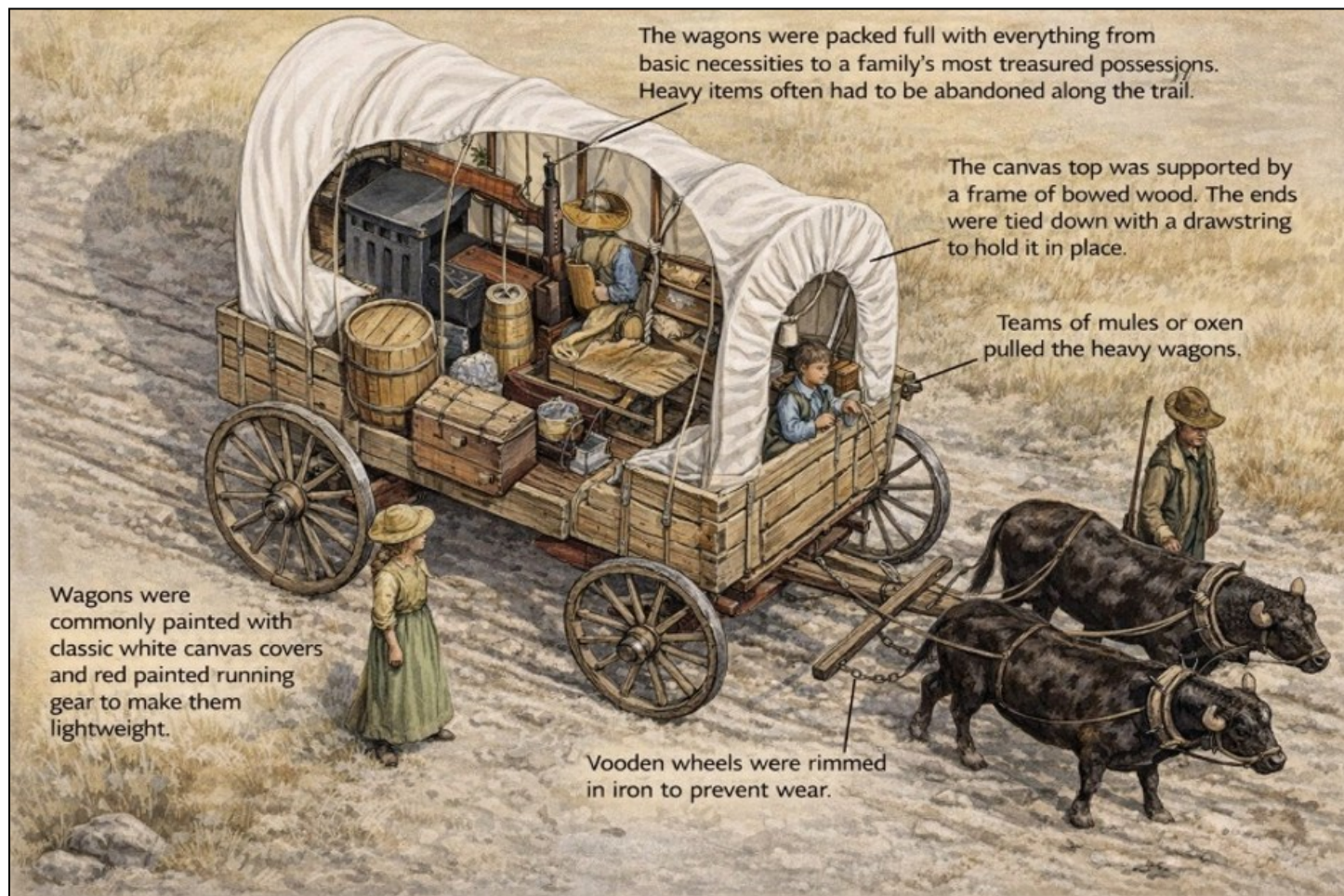
dismissed as a “desert” became known as America’s Breadbasket, one of history’s great ironies.

The Tools That Changed Everything

New horse-drawn farm equipment helped farmers raise and harvest the crops that changed everything. In 1837, John Deere perfected the steel moldboard plow, allowing farmers to break tough prairie sod. Sod bricks even became building material for homes.

Later innovations — grain binders, threshing machines, and tractors — allowed one farmer to cultivate far more land than ever before. Where hand harvesting took about eight man-hours per acre, an 8-foot grain binder could cut and bind 10 to 12 acres in a day.

By the early 1900s, steam and gasoline tractors and the threshing machine (also called a grain separator) made it possible for Great Plains farmers to efficiently process large harvests. Neighboring farms organized “threshing runs.” Neighbors helping neighbors would provide the 12–15-man crew needed to run the threshing



operation and thresh everyone's crop.

As a child, threshing day was an event to remember. The great tractor powered the threshing machine with a long belt, twine knives chewing up

the grain bundles. Men on horse-drawn bundle wagons, one on each side fed bundles into the machine. Straw piled high behind the machine from the blower pipe and grain filled wooden-wheeled wagons to be hauled to the granary. Horses walked in circles, pulling a long arm like the minute hand of a clock, powering a grain elevator filling the granary. Those straw piles weren't wasted; they became winter windbreaks for cattle and warm, dry bedding.

Then Came the Dust Bowl

The Plains are semi-arid. Rainfall is low and highly variable. In the 1930s, drought combined with decades of plowing native grasses led to catastrophe. The Dust Bowl (1930–1940) brought black blizzards, massive topsoil loss, farm failures, migration to California, and wheat prices collapsing from \$2.16 per bushel (1928) to \$0.33.

My parents married in 1930 — a double hardship with the Great Depression and the Dust Bowl. Yet they endured. They told us if they raised even a small wheat crop, it was worth almost nothing. Russian thistle (tumbleweed), a drought-resistant weed, would break loose in the fall and roll across fields until stopped by a fence, catching drifting dust like a snow fence. Dad put up Russian thistle for hay and he sold calves to the government for \$8; most were disposed of. He worked for the WPA, using his wagon and team of horses to gravel roads by hand.

My parents bartered eggs for groceries. They took wheat to the mill for flour; the miller kept a portion for payment.

Farm families often had enough to eat; they



AI generated image. Threshing run.

produced meat, milk, eggs, and vegetables. Town families who lost jobs sometimes did not. My mother dusted the house before my baptism in 1934. That night, a dust storm filled it again. Aunt

Minnie came early the next morning to help clean it once more. That is resilience.

Are We Headed Back to Desert?

The Great Plains naturally experience drought cycles. Climate change may intensify extremes. But unlike 1935, we now have soil conservation science, no-till farming, windbreak systems, irrigation management, and drought monitoring. The Plains are not doomed to become a desert again. But wise stewardship matters.

A Century of Change

In 1800, one farmer fed 3 to 5 people. By 1925, about 16 to 20. By 2020, one farmer feeds over 160 people. In two centuries, we went from wooden plows to GPS-guided combines. From horses to AI-driven precision agriculture. From hand harvesting to global grain markets. As a child, a century once seemed awfully long. In my 90s, it feels awfully short, considering the advancements made.

What would those Oregon Trail emigrants have done if they had known that the “Great American Desert” they crossed would become the Breadbasket of America? Would they have continued?

History often hides opportunity behind misunderstanding. The land once dismissed became one of the most productive agricultural regions on Earth. The story of Kansas — and the Great Plains — is not a story of desert. It is a story of risk, adaptation, endurance, and faith in the land, and in the people who refused to give up on it.

Known, Grown, or Killed

by Richard Vanderlip

Last month my daughter took me to the Southwestern Regional Orchid show in Tulsa, Okla. It was a smaller show with exhibits from Orchid Societies, mainly from Kansas and Oklahoma and several commercial growers with lots of orchids for sale. I came home with three new plants – the Howearra, a seedling of the Gomesa (I hope will bloom next year), and a seedling species Dendrobium. Gomesa is a mericlone so should be exactly like the one pictured [bottom, left].



EVENTS & OPPORTUNITIES

Transportation to Arts in the Park & Manhattan Municipal Band

Sign-up sheets for transportation to the Arts in the Park and the Manhattan Municipal Band performances are now available in the Blue Book.

Window Cleaning around Campus

There will be a company coming around campus from June 10 through June 25 cleaning windows. The schedule is as follows:

- ~ June 16—June 18: Main Building
- ~ June 22—25: Bramlage building and Monarch building (including the sliders on Main building and Monarch building)

Manhattan Arts Center: Musical

A drought, a corrupt corporation, and a public bathroom fee set the stage for this outrageous, award-winning musical satire. *Urinetown* takes a hilarious look at politics, greed, and musical theatre itself, complete with clever humor and toe-tapping tunes.

Performances are June 12–14 at the Manhattan Arts Center. Showtimes are 7:30 p.m. Friday and Saturday, and 2 p.m. Sunday. To purchase tickets, visit tix.com/ticket-sales/tix/7521 or call (785) 537-4420 on weekday afternoons.

Donate Toilet Paper Rolls for Meadowlark Summer Camp

We are in need of 60 toilet paper rolls by July 13 for our annual summer camp that benefits children of employees. We would greatly appreciate your donations of empty toilet paper rolls to the front desk, so our campers can make binoculars for birdwatching!

Andy Bell Jazz Trio—tonight!

Thursday, June 11, at 7:30 p.m.

Join us Thursday, June 11, at 7:30 p.m. in the Event Center as Meadowlark welcomes the Andy Bell Jazz Trio. The group features Andy Bell on saxophone, his son Andrew Bell on guitar, and Kurt Morrow on bass.

Recently inducted into the Kansas Music Hall of Fame, Andy and Kurt bring decades of musical experience and talent to the stage. Don't miss this special evening of outstanding jazz performed by some of Kansas' finest musicians.

Prairie Rose DJ: Courtyard Edition

Friday, June 12, at 7 p.m.

Meadowlark welcomes back Johnny Cyrene, better known as the Prairie Rose DJ, for some great tunes outside under the Kansas sky! All are welcome to attend 7 p.m. Friday, June 12, in the Courtyard.

Explore Our Great Outdoors

Saturday, June 13, at 9, 9:30, or 10 a.m.

The Outdoor Committee is offering opportunities for half-hour rides around unexplored areas of our campus. Sign up in the Blue Book for one of the following times to enjoy a tour: Saturday, June 13, at 9, 9:30, or 10 a.m.

S'mores in the Courtyard

Saturday, June 13, at 6:30 p.m.

All are invited to gather around the fire pit in the courtyard to roast s'mores and enjoy conversation, for a beautiful evening outdoors on Saturday, June 13, at 6:30 p.m.

Worship Services

Sunday, June 14, at 10 & 11 a.m.

Ever wondered what seminary is like? A seminary is a specialized educational institution where students study theology, scripture, and pastoral leadership in preparation for ministry. While a seminary degree typically requires years of coursework, Meadowlark residents can enjoy a "crash course" this summer and fall through a special Spiritual Life learning series during Sunday worship.

Join Rev. Melanie Nord, Spiritual Life Leader, at 10 a.m. or 11 a.m. on Sunday, June 14, in the Community Room/Chapel for the first session, "Intro to the Hebrew Bible." Coffee and fellowship will be available in the lobby between 9:30 a.m. and noon. All are welcome.

Prairie Star Writers Reading Corner

Tuesday, June 16, at 3 p.m.

Join us Tuesday, June 16, at 3 p.m. in the Prairie Star Event Center for a special Prairie Star Reading Corner immediately following Coffee Corner. Members and friends of the Prairie Star Memoir Writing Group will share favorite stories

See **EVENTS**, page 6

EVENTS & OPPORTUNITIES

EVENTS, from page 5

and memories from their lives and experiences.

Founded decades ago at Meadowlark by Charley Kempthorne of LifeStory, the writing group continues to celebrate personal history, storytelling, and connection through the written word. Come enjoy an afternoon of reflection, humor, and unique perspectives on our not-so-distant past.

Volunteer & Tech Helper

Tuesday, June 16, at 4 p.m.

Deborah Goins will be available to assist residents with technology questions from 4 to 5 p.m. Tuesday, June 16, in the Flint Hills Room. Stop by during her visit to ask questions, receive helpful guidance, and connect with Deborah.

Please note that Deborah's June schedule will differ from her usual visits, so watch future Messengers for upcoming dates. She will also offer in-home technology support on Wednesday, June 17. To schedule an in-home visit, please sign up in the Blue Book at the Hospitality Desk. Deborah's regular visit schedule will resume in July.

Summer Vesper Evening Devotion Series

Tuesday, June 16, at 6:30 p.m.

Join us each Tuesday evening this summer for a devotional service from 6:30 to 7 p.m. in the Community Room. Spiritual Life Leader Rev. Melanie Nord leads this time of prayer, reflection, devotion, and song, offering a peaceful way to end the day.

This Tuesday, we are pleased to welcome guest speaker Jeff Schober. Jeff has been part of the Manhattan community since earning his Master of Architecture degree from Kansas State University and marrying his wife, Carmen, in 2012. After serving as a campus minister at K-State, he transitioned into employee benefits consulting and currently serves as Area Vice President of Retirement Plan Consulting for Gallagher. Jeff also earned a Master of Theological Studies degree from Midwestern Baptist Theological Seminary in 2023. He and Carmen are the proud parents of four children: Vivian, Sofia, Leo, and James.

All are welcome to attend this meaningful time of worship and fellowship.

Memory Café

Wednesday, June 17, at 10 a.m.

Memory Café meets every Wednesday from 10 to 11 a.m. in the KSU Classroom at Meadowlark and virtually via Zoom. Memory Café is led by Linda Montgomery, Licensed Social Worker, and features story sharing, reminiscing and social engagement.

KSU String Camp

Wednesday, June 17, at 11 a.m.

Join us Wednesday, June 17, at 11:30 a.m. in the Event Center for a special musical performance by students participating in Kansas State University's String Leadership Institution music camp.

Residents will enjoy an afternoon of string music performed by talented young musicians, who will also share insights about their musical journeys and experiences. Don't miss this opportunity to support these dedicated students and enjoy a wonderful live performance.

Page Turner Book Club

Wednesday, June 17, at 11:30 a.m.

Join the Page Turners Book group for our final discussion of *Because of Winn-Dixie* by Kate DiCamillo. The movie will show in Grosh Cinema on Tuesday, June 16 at 1, 4, and 7 p.m. At our discussion on Wednesday, we will compare the book and movie. You are welcome to join us if you read the book or watched the movie! You do not have to attend every session to participate, come when you are able. If you have any questions, please contact Katie Sigman at (785) 323-3899.

Speedy PD Art Making

Wednesday, June 17, at 1:30 p.m.

Join the Meadowlark Parkinson's Program and the Beach Museum of Art in creating artwork for the 18th annual Speedy PD Race for Parkinson's Disease. These handmade pieces will be awarded to 5K and 10K age-group winners at the August event.

The Speedy PD Race raises awareness of Parkinson's disease and serves as the primary fundraiser for the Meadowlark Parkinson's Program. Art supplies and inspiration are provided by the Beach Museum of Art, and no prior art experience is needed.

EVENTS & OPPORTUNITIES

The group meets Wednesdays through July 8 from 1:30 to 2:30 p.m. in the KSU Classroom. Feel free to come and go as your schedule allows.

Volunteer & Tech Helper

Wednesday, June 17, at 4 p.m.

Deborah Goins will be available to provide in-home technology support to residents on Wednesday, June 17.

Please sign up in the Blue Book at the Hospitality desk for a time to meet with her for an in-home visit. July visits returns to usual schedule.

Veterans Group

Thursday, June 18, at 10 a.m.

Veterans and their spouses are invited for coffee and conversation at 10 a.m. Thursday, June 18, in the Manhattan Room. This group meets every third Thursday.

FUMC Communion

Thursday, June 18, at 11 a.m.

Join the pastors from First United Methodist Church Thursday, June 18, at 11 a.m. in the Flint Hills Room to receive communion. This opportunity is open to anyone wanting to invite Christ into his or her heart.

Lettuce Ketchup with Parkinson's Lunch

Thursday, June 18 at 11:30 a.m.

People with Parkinson's (PwPD), their care partners, and members of their support network are invited to enjoy a meal and fellowship the third Thursday of every month. This lunchtime opportunity is for those interested in dining and sharing life together along their Parkinson's journey. The lunch takes place in the KSU Classroom at Meadowlark. To better accommodate the size of our group the restaurant will offer one meal option. The cost of food and drinks is the responsibility of each attendee. Because we are meeting in the KSU Classroom, you are welcome to bring your own food if you prefer. To learn more or RSVP please call (785) 323-3899. For convenience, this opportunity is offered right before PD Exercise Class. Michelle and/or Katie will join monthly.

Taste of Summer

Thursday, June 18, at 2 p.m.

Join us once again on Thursday, June 18, in the Courtyard, at 2 p.m. to enjoy the second event of the series which will feature "tastes" of several bite-size creations made by the Prairie Star Team. This is a free event, and all are encouraged to come out and enjoy a hopefully beautiful day. More information will be shared in the Messenger closer to each event date.

Card Making with Michelle Lehmer

Thursday, June 18, at 2:30 p.m.

The next Card Making with Michelle Lehmer class will occur on Thursday, June 18, at 2:30 p.m. in the Flint Hills Room. She provides card making supplies for FREE! It's a fun time for all.

Gladius: Musical Performance

Saturday, June 27, at 1 p.m.

Join us Saturday, June 27, at 1 p.m. in the Event Center as Meadowlark welcomes Gladius for an unforgettable musical performance.

Raised in Atlanta, Georgia, and trained by a protégé of legendary guitarist Andrés Segovia, Gladius blends classical and flamenco influences with the energy of rock guitar. An award-winning composer and accomplished performer, he has shared the stage with Grammy-winning artists and captivated audiences across the country with his dynamic live shows since 2016.

Don't miss this exciting afternoon of exceptional musicianship and entertainment. All are welcome!

American Classics Menu

Monday, June 29

Starting Monday, June 29, Prairie Star will feature a weeklong special menu to celebrate America by featuring signature dishes from several states. Prairie Star looks forward to celebrating with you through good food and great company.

Lollipops & Lemonade

Monday, June 29, at 3 p.m.

All are welcome to attend the Lollipops and Lemonade event from 3 to 4 p.m. Monday, June 29, in the Courtyard. This opportunity, hosted by Meadowlark Ambassadors, will feature refreshing lemonade and tasty lollipops.

RESTAURANT **SPECIALS**

<p>Sunday, June 14</p>	<p>Sunday Brunch Brunch Menu available from 9 a.m. to 2 p.m.</p>	<p>\$15 Dinner Beef Tips Mashed Potatoes & Gravy Broccoli</p>
<p>Monday, June 15</p>	<p>\$11 Lunch Cheeseburger Sliders French Fries</p>	<p>\$14 Dinner Fried Pork Cutlet Mashed Potatoes & Gravy Green Beans</p>
<p>Tuesday, June 16</p>	<p>\$10 Lunch Meatball Sub Pub Chips</p>	<p>\$16 Dinner BBQ Brisket Twice Baked Potatoes Coleslaw</p>
<p>Wednesday, June 17</p>	<p>\$10 Lunch Vegetable Lasagna Garlic Bread</p>	<p>\$15 Dinner Chicken Fajitas Refried Beans Mexican Rice</p>
<p>Thursday, June 18</p>	<p>\$10 Lunch Chicken Nachos <i>(shredded chicken, black beans, tortilla chips, queso, Pico de Gallo, guacamole, & sour cream)</i></p>	<p>\$15 Dinner Wild Mushroom Chicken Roulades <i>served with Sherry Sauce</i> Wild Rice Carrots</p>
<p>Friday, June 19</p>	<p>\$11 Lunch Pizza Bar</p>	<p>\$23 Dinner Oyster Rockefeller Garlic Parmesan Pasta Grilled Asparagus</p>
<p>Saturday, June 20</p>	<p>\$11 Lunch Buffalo Chicken Wrap <i>(honey wheat tortilla, buffalo chicken, lettuce, carrots, carrots, & blue cheese dressing)</i> Sweet Potato Fries</p>	<p>\$15 Dinner Fried Chicken Mashed Potatoes & Gravy Corn</p>

Weekly Opportunities Calendar *June 14 to June 20*

Sunday • June 14 *Put your trash at the curb!*

8:45 a.m. ~ Transport to College Ave UMC, ME
 9:30 a.m. ~ Sunday Morning Fellowship, ME
 10:00 a.m. ~ Transport to College Ave UMC, ME
 10:00 a.m. ~ Worship Service, CR/**1960**
 10:30 a.m. ~ Transportation to FUMC, ME
 11:00 a.m. ~ Worship Service, CR/**1960**

Monday • June 15 *Trash pick-up*

9:30 a.m. ~ Seated Strength, CR/**1960**
 9:30 a.m. ~ Memory Care Partners Group, **STM**
 10:00 a.m. ~ Tuttle Creek Ladies, BR
 10:00 a.m. ~ Tuttle Creek Men, MR
 10:30 a.m. ~ Weights 101, CR/**1960**
 11:00 a.m. ~ Rock Steady Boxing, **PF**
 11:30 a.m. ~ Sit & Be Fit, CR/**1960**
 1:00 p.m. ~ Parkinson's Exercise Class, CR/**1960**
 1:30 p.m. ~ God Talk, KSU CL
 1:45 p.m. ~ Parkinson's Voice Class, CR
 2:00 p.m. ~ Tai Chi, EC
 5:30 p.m. ~ 5th Floor Supper, MR
 7:00 p.m. ~ Community Bingo, CR

Tuesday • June 16

10:00 a.m. ~ Memory Activities Class, EC
 10:00 a.m. ~ Mat Yoga, KSU CL
 10:30 a.m. ~ Steady Yourself, CR/**1960**
 11:15 a.m. ~ Chair Yoga, CR/**1960**
 2:00 p.m. ~ 10-Point Pitch Group, GR
 2:00 p.m. ~ Social Circles, PS
 2:00 p.m. ~ Water Media Painting, KSU CL
 3:00 p.m. ~ Coffee Corner, EC
 3:00 p.m. ~ Prairie Star Reading Corner, EC
 4:00 p.m. ~ Tech Help, FHR
 5:30 p.m. ~ 2nd Floor Supper, BR
 6:30 p.m. ~ Vespers, CR

Wednesday • June 17

9:30 a.m. ~ Seated Strength, CR/**1960**
 10:00 a.m. ~ Walmart/Dillons Shopping Trip, ME
 10:00 a.m. ~ Memory Care Partners Group, FHR
 10:00 a.m. ~ Memory Café, KSU CL
 10:30 a.m. ~ Weights 101, CR/**1960**
 11:30 a.m. ~ Sit & Be Fit, CR/**1960**
 11:30 a.m. ~ West Monarch, MR
 11:30 a.m. ~ Page Turners Book Club, PR
 1:30 p.m. ~ Speedy PD Art Making, PR
 2:00 p.m. ~ Tai Chi, EC

Wednesday • June 17, *continued*

3:00 p.m. ~ Rock Steady Boxing, CR
 3:00 p.m. ~ Sing-Along, FHR

Thursday • June 18

9:00 a.m. ~ Messenger Team, VBL
 9:00 a.m. ~ Library Tech Help, FHR
 10:00 a.m. ~ Mat Yoga, KSU CL
 10:00 a.m. ~ Memory Care Partner Group, **WPL**
 10:00 a.m. ~ Veteran's Group, MR
 10:30 a.m. ~ Steady Yourself, CR/**1960**
 11:00 a.m. ~ FUMC Communion, FHR
 11:15 a.m. ~ Chair Yoga, CR/**1960**
 11:30 a.m. ~ Lettuce Ketchup with PD, KSU CL
 1:00 p.m. ~ Parkinson's Exercise Class, CR/**1960**
 2:00 p.m. ~ Taste of Summer, CY
 2:30 p.m. ~ Card Making with Michelle, FHR
 2:30 p.m. ~ Fanny & Furby, KR
 5:30 p.m. ~ Meadowlark Circle Dinner, MR

Friday • June 19

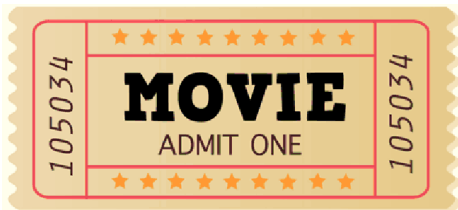
7:30 a.m. ~ Rock Steady Boxing, **PF**
 9:30 a.m. ~ Seated Strength, CR/**1960**
 10:30 a.m. ~ Weights 101, CR/**1960**
 11:30 a.m. ~ Sit & Be Fit, CR/**1960**
 3:00 p.m. ~ Catholic Rosary, CR

Saturday • June 20

9:00 a.m. ~ Tai Chi, **1960 only**
 9:30 a.m. ~ Band Bust Exercise Class, **1960 only**

Room Abbreviations

1960 , TV Channel 1960	ME, Main Entrance
BR, Bison Room	MM , 120 N. Scenic Drive
CR, Community Room	MR, Manhattan Room
CY, Courtyard	PF , Peakform Wellness Center
EC, Event Center	PR, Patriot Room
FHR, Flint Hills Room	PS, Prairie Star Restaurant
GC, Grosh Cinema	STM , St. Thomas More Church
KR, Kansas Room	VBL, Verna Belle's Lounge
KSU CL, KSU Classroom	WPL , Wamego Public Library



GROSH CINEMA SHOWTIMES

MONDAY TO SATURDAY 1:00 P.M. / 4:00 P.M. / 7:00 P.M.
SUNDAY 2:00 P.M. / 6:00 P.M.

SUNDAY: June 14

MY GIRL (1991) PG, 1 hr. 42 min. *Coming-of-Age, Comedy, Drama*

Cast: Dwayne Johnson, Kevin Hart, & Jack Black

Vada is obsessed with death. Her mother is dead, and her father runs a funeral parlor. When Vada's father hires Shelly, a makeup expert, and begins to fall in love, Vada is outraged and does everything in her power to split them up.

MONDAY: June 15

THE UGLY STEPSISTER (2025) NR, 1hr. 49 min. *Body Horror, Norwegian, Drama*

Cast: Lea Myren, Ane Dahl Torp, & Thea Sofie Loch Naess

Elvira battles against her gorgeous stepsister in a realm where beauty reigns supreme. She resorts to extreme measures to captivate the prince, amid a ruthless competition for physical perfection.

TUESDAY: June 16

PAGE TURNER REQUEST

BECAUSE OF WINN DIXIE (2005) PG, 1 hr. 46 min. *Animal Adventure, Family, Comedy, Drama*

Cast: AnnaSophia Robb, Jeff Daniels, & Eva Marie Saint

Ten-year-old Opal adopts an unkempt dog she finds at a supermarket and names it Winn-Dixie. Soon, Opal and Winn Dixie befriend people who teach Opal about her mother and life.

WEDNESDAY: June 17

THE LAST WORD (2017) R for language, 1 hr. 48 min. *Dark Comedy, Quirky, Drama*

Cast: Shirley MacLaine, Amanda Seyfried, & AnnJewel Lee Dixon

Harriet is a retired businesswoman who tries to control everything around her. When she decides to write her own obituary, a young journalist takes up the task of finding out the truth, resulting in a life-altering friendship.

THURSDAY: June 18

RESIDENT REQUEST

WHALE RIDER (2002) PG-13, 1 hr. 41 min, *Family, Drama*

Cast: Keisha Castle-Hughes, Rawiri Paratene, & Vicky Haughton

A contemporary story of love, rejection and triumph as a young Maori girl fights to fulfill a destiny her grandfather refuses to recognize.

FRIDAY: June 19

WEEKEND AT BERNIE'S (1989) PG-13, 1 hr. 37 min. *Slapstick Comedy, Adventure*

Cast: Andrew McCarthy, Jonathan Silverman, & Catherine Mary Stewart

Two idiots try to pretend that their murdered employer is really alive, leading the hitman to attempt to track him down to finish him off.

SATURDAY: June 20

RESIDENT REQUEST

THE GREAT ESCAPE (1963) Approved, 2 hr. 52 min. *Epic, War, Adventure, Drama*

Cast: Steve McQueen, James Garner, & Richard Attenborough

Allied officers in a German POW camp during World War II make a daring plan for a mass escape.