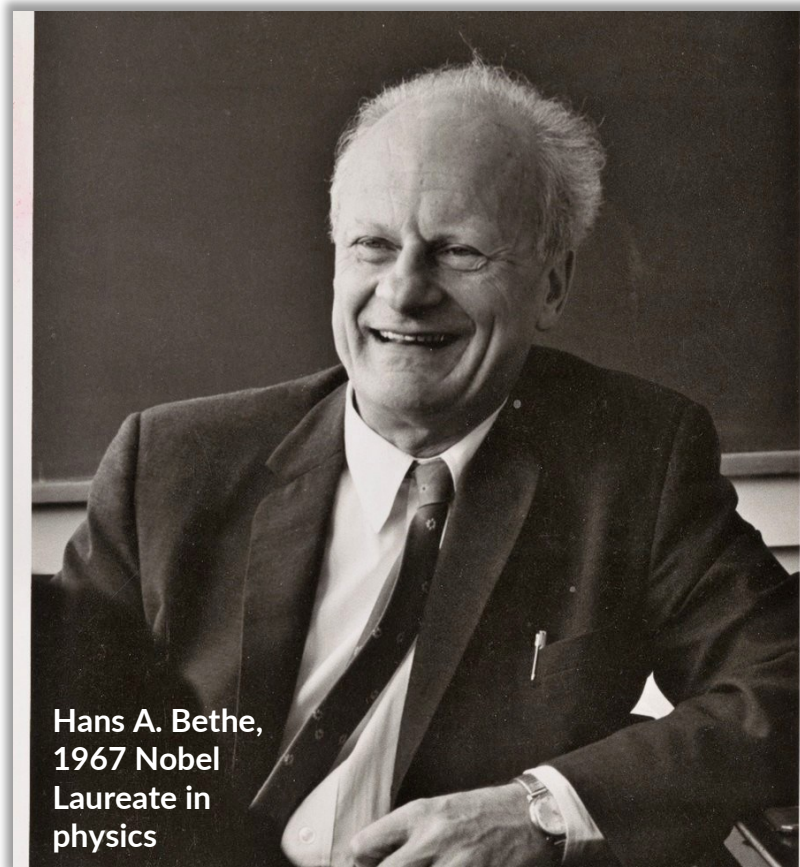

The Future Laureate & the Snowdrift



Hans A. Bethe,
1967 Nobel
Laureate in
physics

by Noel Stanton

When I was a grad student at Cornell in the early 1960s, the most illustrious member of the physics faculty was Hans A. Bethe. Back in 1939, he had answered one of the most intriguing questions in science, “What makes the stars shine?” by writing down the chains of nuclear reactions that release all that energy. Everybody knew that he was going to get a Nobel Prize – it was just a matter of when. Bethe was a saintly-looking man with a halo of grey hair and a kindly smile, regarded by the students with a

mixture of affection and veneration.

While Professor Bethe was doing elegant nuclear theory on the top floor of Newman Lab, I was one of the rookie research assistants down in the basement learning how to tune an electron beam.

The basement of Newman Lab was home to an electron accelerator for basic research in high-energy particle physics (this was in the last days that a “high energy” accelerator could still fit in a lab basement). The job of a beam tuner was to achieve and keep an intense beam of circulating

See LAUREATE, page 2

LAUREATE, from page 1

electrons for faculty and more senior grad students to use in physics experiments (Our time would come, we were told). He, or much more rarely, she sat at a control panel bristling with meters, monitors of beam intensity, and an array of twiddle-able knobs whose functions we only vaguely understood. Beam tuning was more of a black art than a science. The most skillful person by far was our supervisor and instructor, an astute one-armed farmer from north of town with no training in physics who had made himself indispensable as an accelerator tech.

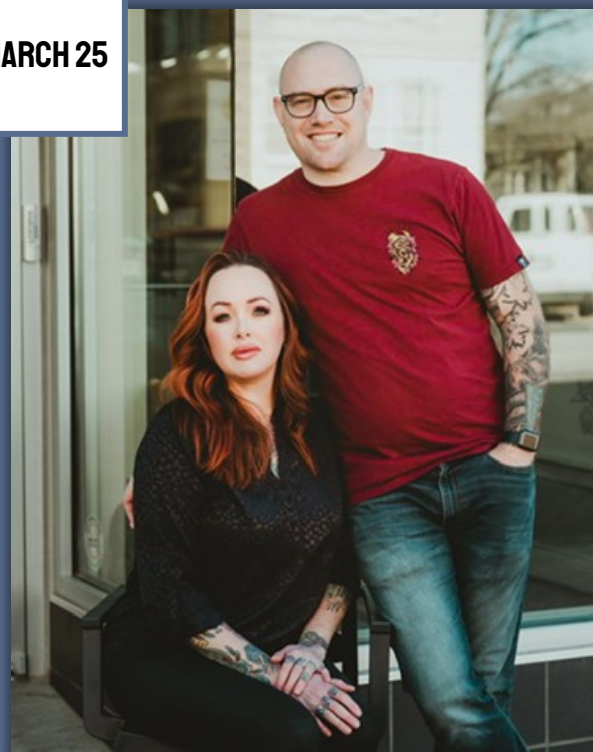
Ithaca, N.Y. lies at the tail end of the snow belt that keeps Buffalo and Syracuse buried for most of the winter. It's not quite as severe in Ithaca, but Cornell still ranks as one of the 10 snowiest campuses in the country. So, it came as no huge surprise when I emerged from a beam-tuning shift one midnight to find that the family car was now deep in a snowdrift in an almost deserted parking lot.

This car was an orange 1954 Pontiac Chieftain, not Detroit's finest hour in the best of times, and definitely not ideal for Ithaca winters even with snow tires. Its main virtue was that it was a free hand-me-down from the in-laws. After doing what I could with the little trench shovel I kept in the trunk, I began the now-familiar ritual of rocking the car back and forth to get some traction.

I was completely absorbed in my lonely task when I was startled by a tap on the window. A familiar German-accented voice asked, "May I help you?" and without waiting for a reply, the future Nobel Laureate got behind the car and pushed.

In a few minutes the Pontiac was freed. But all the while, my head held just one, very ungrateful thought: "What if Hans Bethe drops dead pushing *my* car?"

MARCH 25



2026 LENTEN LECTURE SERIES

ALI GOSS & MATT GOSS

OWNERS & FOUNDERS
ENAMORED BY ALI & SYNDICATE TATTOO

Matt and Ali Goss are a husband-and-wife tattoo artist team and longtime residents of Manhattan, Kan. Matt, tattooing since 2005, is a U.S. Army veteran and the owner of Syndicate Tattoo, where he specializes in geometric, floral, and transformative cover-up work, including paramedical tattooing. Ali is a licensed cosmetic tattoo artist and the owner of Enamored by Ali, known for natural-looking permanent makeup such as nano-brows and lip blushing. She also offers areola reconstruction for breast cancer survivors. Together, they blend artistry with community-driven healing, working with nonprofits while raising their family here in the Little Apple.

Known, Grown, or Killed

by Richard Vanderlip

This month, I'm going to completely change directions. How would you like to have a huge orchid collection that you don't have to water or re-pot; worry about pests or diseases; and would only require a little space and would not die? I'm talking about a collection of orchids on postage stamps. I have a collection of over 8,000 stamps from 269 countries. I have a list of over 10,000 stamps with orchids on them. My collection is in 19 3-ring binders on a shelf about 3 ½ ft. long.

The US released 10 stamps with orchids in 2020. Unfortunately, none were found in Kansas. Guyana

released stamps with paintings from Sanders Reichenbachia, "Orchids Illustrated and Described" from the 1890s. This stamp shows how they are described in my collection. In the Singapore stamp, *Vanda Miss Joaquim* was a hybrid made in Malaysia in 1893, cuttings were sent to Hawaii where it was an important cut flower. They were shipped to the mainland in huge quantities for a penny a piece in the 1960s. I couldn't resist including some Australian orchids. The Magyar stamp is from Hungary. I don't think anyone has seen anything with these colors except the dyed *Phalaenopsis* in the grocery stores.



EVENTS & OPPORTUNITIES

Water Color Studio, canceled (Thursday)

The Water Color Studio Thursday sessions will be canceled March 19 through April 9. Tuesday's session will continue as planned .

Trash Service Change, Duplex Residents

Beginning April 1, trash service for Meadowlark duplex residents will transition from Howie's Recycling & Trash Service to Garibay Trash Service. As part of this change, trash totes will need to be replaced. Maintenance will share the tote exchange date once it has been confirmed with Garibay.

Garibay plans to provide a 96-gallon trash tote for each duplex residence. Residents who have questions or who would prefer a smaller tote are encouraged to contact Maintenance.

Some residents currently pay separately for recycling service. Those residents may choose to continue recycling with Howie's or switch recycling service to Garibay. Residents who wish to change providers will need to set up their recycling account with Garibay and cancel service with Howie's.

Messenger Volunteers Needed

We are looking to add a couple of volunteers to our Meadowlark Messenger Team! This is a resident group that meets on Thursday mornings, shortly before 9 a.m. until about 9:30 a.m. in the KSU Classroom. It's a small, but mighty group, filled with fun times and lively conversations! Volunteers divide and conquer, folding 500 copies of our resident newsletter that is printed in sheets and need to be folded in half. The time goes by quickly, but the company is great!

We also are in need of one more delivery volunteer. This volunteer will deliver nine Messengers to residents who live across from the Community Center, spanning from 2110 Meadowlark Road to 2150 Meadowlark Road every Thursday, after folding has been completed.

New volunteers will be provided with training. It normally takes just a few minutes to understand both positions.

If you are interested in filling one or both

opportunities, please contact Jana Armfield, Engagement Specialist, at (785) 323-3890, or by email at jarmfield@meadowlark.org.

Fanny & Furby—Visits Returning

Thursday, March 19, at 3 p.m.

Great news! Fanny, and her loveable cockapoo, Furby, have returned from their recent adventures and are eager to visit with residents in the Kansas Room, starting today, March 19. They plan to swing by from 3 to 3:30 pm, so be sure to attend if you'd like some sweet doggie cuddles.

Music of Jean Kennedy

Friday, March 20, at 7 p.m.

Join us Friday, March 20, at 7 p.m. in the Event Center for an evening of music with Jean Kennedy.

Jean is an accomplished guitarist, vocalist, songwriter, and instructor who has been teaching guitar and bass since 2001. In addition to private instruction, she serves as adjunct guitar faculty at McPherson College and Central Christian College in McPherson, Kan. Jean earned her bachelor's degree in music performance from Idaho State University and has studied with and performed in master classes with several renowned guitarists.

Saturday Shopping Trip

Saturday, March 21, at 10:30 a.m.

The next scheduled trip is Saturday, March 21, with transportation going to Hobby Lobby and Dollar Tree East. The bus will depart from the Village Entrance at 10:30 a.m., and the return time is set for 11:45 a.m.

Next month's trip will travel to Target and Dollar Tree West on Saturday, April 18. Please sign up in the Blue Book to participate.

Worship Services

Sunday, March 22, at 10 & 11 a.m.

Join Rev. Melanie Nord, Spiritual Life Leader, for worship at 10 a.m. or 11 a.m. on Sunday, March 22, in the Community Room/Chapel. This week's sermon title is "Give-up-Itis' Strikes a Prophet" All are welcome to enjoy coffee and fellowship before or after worship in the lobby between 9:30 a.m. and 12 p.m.

EVENTS & OPPORTUNITIES

Fellowship with First Assembly of God Church

Monday, March 23, at 10 a.m.

Stewart Mowry and Scott Taylor are two of Meadowlark's newest volunteers who are eager to connect with residents and build meaningful community.

Beginning March 23, they will be hosting a non-denominational Bible study on the 2nd and 4th Monday of the month, at 10 a.m. in the Flint Hills Room. The gathering will offer a welcoming space for reflection, conversation, and fellowship.

Stewart, a classically trained violinist and pastor, will also share his musical talents during the study, giving participants the opportunity to enjoy violin selections and join in singing a few familiar tunes. Both Stewart and Scott are members of First Assembly of God and are looking forward to getting to know residents while engaging in thoughtful discussion and spiritual encouragement.

Prairie Star Menu Discussion

Monday, March 23, at 11 a.m.

Join for a meeting on Monday, March 23, at 11 a.m., in the event center to discuss menu changes with Michaela and Jayme.

UFM Class: Look, Learn, & Make— Papercuts, Assemblages, & Cyanotype

Wednesday, March 25, at 10 a.m.

The final session of "Look, Learn, & Make: Papercuts, Assemblages, & Cyanotype," is in the Event Center on Wednesday, March 25, from 10 to 11:30 a.m.

This class is offered through UFM at no charge to Meadowlark residents, and Passport members may attend with a 20-percent discount.

Page Turners Book Club

Wednesday, March 25, at 11:30 a.m.

Join the Page Turners Book Club for our final discussion of *Snow Flower and the Secret Fan* by Lisa See. This historical fiction novel set in 19th-century China tells the story of a lifelong friendship between Lily and Snow Flower who are bound together as laotong (old sames) at the age of seven. The movie will be shown in the Grosh

Cinema on Tuesday, March 24, at 1, 4, and 7 p.m. We will discuss the differences between the film and book on Wednesday, March 25, at 11:30 a.m. in the Patriot Room. You are welcome to join us whether you read the book, saw the movie, or both! If you have questions, please contact Katie Sigman at (785) 323-3899. Our next book will be *The Art of Racing in the Rain* by Garth Stein.

Line Dancing Lessons

Wednesday, March 25, at 3 p.m.

Join us Wednesday, March 25, in Verna Belle's Lounge for Line Dance lessons at 3 and 3:30 p.m.

Prairie Star Closed in Evening

Thursday, March 26, at 4 p.m.

Prairie Star Restaurant dine-in seating will be closed on Thursday, March 26, evening starting at 4 p.m. due to Memory Matters Symposium. The restaurant will be operating to-go and delivery meals from the Kannas Room. All delivery fees will be waived due to the inconvenience.

Men's Bible Study & Breakfast

Thursday, March 26, at 7:30 a.m.

Join the Men's Bible Study and Breakfast each Thursday at 7:30 a.m. in the Manhattan Room. Breakfast cost is on your own. Please contact resident Max Bayer with questions.

Knitting & Crocheting Group

Thursday, March 26, at 2:30 p.m.

Are you interested in learning how to knit or crochet? Or maybe you have ongoing projects you'd like to work on? Whether you are just beginning or have years of experience, join other yarn creatives in the Kansas Room at 2:30 p.m. Thursday, March 26, for a fun, social, creative opportunity. All skill levels are welcome!

Music with Nate McClendon

Friday, March 27, at 7 p.m.

Join us at 7 p.m. Friday, March 27, in the Event Center for a performance by Nate McClendon.

Nate shares his love of music through performances that highlight music's unique ability to connect people. As he puts it, music allows us to share a communal experience while each having our own personal response. All are welcome.

See EVENTS, page 6

Page 5

EVENTS, from page 5

K-State's Phi Mu Alpha

Sunday, March 29, at 12 p.m.

Meadowlark welcomes K-State's Phi Mu Alpha chapter on Sunday, March 29, at 12 p.m. in the Event Center.

Phi Mu Alpha is a music fraternity dedicated to uplifting members and their communities through music. As part of their service initiative, Mill's Music Mission members will share a special musical program with Meadowlark residents. All are welcome to attend.

K-State Clarinet Recital

Tuesday, March 31, at 7 p.m.

On Tuesday, March 31, at 7 p.m., in the Community Room, a K-State music group led by Amy Guffey will be sharing a recital of music that you don't want to miss!

Protecting Your Legacy: Protecting Loved Ones During Cognitive or Physical Decline

Wednesday, April 1, at 6 p.m.

UFM is offering a class titled "Protecting Your Legacy: Protecting Loved Ones During Cognitive or Physical Decline." Join the session in the Community Room on Wednesday, April 1, from 6 to 7:15 p.m.

When a loved one starts to face cognitive decline, the legal and financial questions can feel overwhelming. This class helps you understand what steps to take to protect them—and yourself. Learn about powers of attorney, guardianship, advance healthcare directives, and ways to reduce the risk of financial or online fraud. Whether you're supporting aging parents or a spouse or partner, this session offers guidance and peace of mind for families navigating tough transitions. The session is led by Lisa Ward, a business, real estate, and estate-planning attorney with decades of experience.

Enrollment is now open and can be completed by calling (785) 539-8763. This class is offered through UFM at no charge to Meadowlark residents, and Passport members may attend with a 20-percent discount.

EASTER BUFFET

April 5th 11:00-2:00

Prairie Star Restaurant

\$30 PER PERSON

HOT

Carved Prime Rib
Carved Ham
Crab Stuffed Sole
Pork Tenderloin
Shrimp & Chicken
Penne
Chicken Roulades
Gouda Scalloped
Potatoes
Wild Rice
Asparagus Medley
Corn O'Brien

COLD

Poached Salmon
Salad Waterfall
Fruit Display
Jell-O Molds
Deviled Eggs
Seafood Salad
Chicken Salad
Cucumber Salad
Ambrosia
Pasta Salad
Waldorf Salad
Tortellini Salad
Assorted Bread Display

DESSERTS

Apple Cake
Red Velvet Cake
Carrot Cake
Chocolate Strawberry
Cheesecake
Tiramisu
Mixed Berry Tart
Bailey Cheesecake
Lemon Meringue Pie
Dutch Apple Pie
Honey Walnut Pie
Orange Bundt Cake

RESERVE YOUR SPOT AT THE HOST STAND

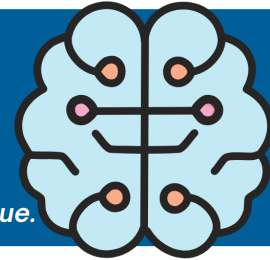


Meadowlark residents are encouraged to attend the morning session of Memory Matters.

MEMORY MATTERS

presented by Meadowlark Memory Program

The Memory Matters Symposium is underwritten by Robert Reeves in memory of his wife, Sue.



Thursday, March 26, 2026

9 a.m. & 5:30 p.m.



Prairie Star's Event Center at Meadowlark

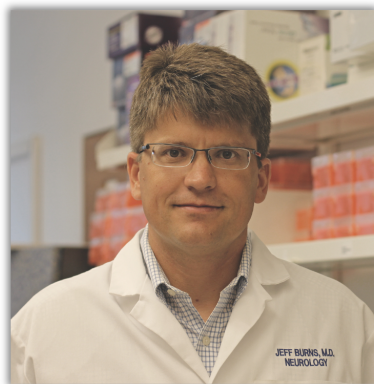
2121 Meadowlark Road / Manhattan, Kan.

THE CONTENT OF THE SESSIONS ARE THE SAME. PLEASE ATTEND ONLY ONE.

“The New Era of Brain Health: Earlier Detection, Better Care, & What You Can Do Today”

presented by Jeffrey M. Burns, MD, MS

Co-Director, KU Alzheimer's Disease Research Center, University Distinguished Professor
Edward H. Hashinger Professor of Medicine, Department of Neurology, Director, Memory Care Clinic



Alzheimer's disease is entering a new era of earlier detection and more effective treatment. New blood tests can now identify Alzheimer's-related changes in the brain sooner, and emerging therapies can slow progression in carefully selected patients. The KU Alzheimer's Disease Research Center is building innovative care models that help primary care providers diagnose and manage cognitive changes more effectively. This talk will explain what these advances mean for patients and families, how care is shifting from late-stage crisis management to proactive brain health, and the practical, evidence-based lifestyle changes, such as exercise, vascular health, sleep, and nutrition, that can support lifelong cognitive health.

9:00 a.m. / Meet, Greet, & Eat

Featuring free brain-healthy snacks!

9:30 a.m. / Featured speaker,
Dr. Jeffrey M. Burns

10:25 a.m. / Exercise Break

10:35 a.m. / Q&A Panel

A panel of medical professionals, people with cognitive changes, & care partners will answer questions and share their journey.

11:30 a.m. / Closing Remarks



5:30 p.m. / Meet, Greet, & Eat

Featuring free brain-healthy snacks!



6:00 p.m. / Featured speaker,
Dr. Jeffrey M. Burns



6:55 p.m. / Exercise Break

7:05 p.m. / Q&A Panel

A panel of medical professionals, people with cognitive changes, & care partners will answer questions and share their journey.



8:00 p.m. / Closing Remarks

Memory Matters is an outreach and education opportunity focused on dementia and Alzheimer's disease presented by Meadowlark Memory Program. Join us in encouraging engagement and understanding, while ultimately helping to de-stigmatize cognitive changes and decline.



Parkinson's Education Group Monthly Meeting

BELOW THE SURFACE OF PARKINSON'S: DIVING INTO WHAT OTHERS DON'T SEE

Thursday, April 2, at 2 p.m. / Community Room at Meadowlark

2121 Meadowlark Rd, Manhattan, Kansas

Parkinson's symptoms go beyond tremors and stiffness. Many people experience "invisible" non-motor symptoms like sleep changes, depression, and bladder issues—often more troubling than the visible ones. Join us for an informal, supportive discussion where people living with PD and care partners can share experiences, ask questions, and learn ways to live well.

Zoom: <https://us06web.zoom.us/j/85012529682> **Mtg ID:** 850 1252 9682

Questions? Contact Michelle at (785) 323-3899.

DRINK SPECIAL

RUM SIDECAR



\$5

MARCH 23RD - MARCH 29TH

MICHELLE'S CARD MAKING CLASS

Thursday, March 26th
(postponed from March 19)

2:30 to 4:30pm

Flint Hills Room

Make festive Springtime cards
for FREE at this come
and go activity.

Art Engagement *from the* Beach Museum of Art



Barbara Latham (United States, 1896 - 1988), *Evening (Artist's Interior)*, ca. 1934, Woodcut on paper, KSU, Marianna Kistler Beach Museum of Art, Friends of the Beach Museum of Art purchase, 2007.15

A printmaker working in black and white uses contrast to create visual interest and emphasis. Juxtaposing light and dark areas will allow one object to be distinguished from another object. Creating visual texture next to smooth areas in a composition can create emphasis. For example, notice how the window mullions are created with lines next to the solid black to suggest glass. There may even be a distinction between how objects are paired next to each other to provide interest. Look at how the figure on the left is shown from behind and from the front. Where else do you identify contrast being used to create interest and emphasis?

Holy Week Opportunities

with Melanie Nord, Spiritual Life Leader

Palm Sunday Worship Services
March 29 / 10 a.m. & 11 a.m.

A commemoration of Jesus' triumphant entry into Jerusalem.

Final Lenten Lecture
April 1 / 1 p.m.

Maundy Thursday Worship Service
April 2 / 1 p.m.

A remembrance of the Last Supper.

Good Friday Worship Service
April 3 / 1 p.m.

A walk-through of Jesus' final moments on Earth.

Easter Sunday Worship Services
April 5 / 10 a.m. & 11 a.m.

A celebration of the Resurrection.


MEADOWLARK
Foundation

Gifts benefiting the Good Samaritan Fund, Helping Hands Fund, Meadowlark Memory Program, and Meadowlark Parkinson's Program were received by Meadowlark Foundation during the month of February.

Memory of

Kent Carmichael
Beverley Dodds
Bob Hammaker

RESTAURANT **SPECIALS**

<p>Sunday, March 22</p>	<p>Sunday Brunch Brunch Menu available from 9 a.m. to 2 p.m.</p>	<p>\$16 Dinner Beef Tips Mashed Potatoes & Gravy Broccoli</p>
<p>Monday, March 23</p>	<p>\$11 Lunch Cheeseburger Sliders French Fries</p>	<p>\$17 Dinner Chicken Fajitas Refried Beans Mexican Rice</p>
<p>Tuesday, March 24</p>	<p>\$10 Lunch Bacon-Cheddar-Egg Salad <i>served on a Croissant</i> Breakfast Potatoes</p>	<p>\$15 Dinner Beef Stroganoff Garlic Breadsticks Roasted Broccoli</p>
<p>Wednesday, March 25</p>	<p>\$11 Lunch Buffalo Chicken Wrap Sweet Potato Fries</p>	<p>\$14 Dinner Fried Pork Cutlet Mashed Potatoes & Gravy Green Beans</p>
<p>Thursday, March 26</p>	<p>\$9 Lunch Reuben Bratwurst Potato Salad</p>	<p>\$14 Dinner Garlic-Rosemary Chicken Smashed Potato Broccoli</p>
<p>Friday, March 27</p>	<p>\$11 Lunch Pizza Bar</p>	<p>\$25 Dinner Sesame-Crusted Ahi Tuna Grilled Avocado Salad Jasmine Rice</p>
<p>Saturday, March 28</p>	<p>\$11 Lunch BBQ Chicken Sandwich Broccoli Salad</p>	<p>\$15 Dinner Fried Chicken Mashed Potatoes & Gravy Corn</p>

Weekly Opportunities Calendar *March 22 to March 28*

Sunday • March 22 *Put your trash at the curb!*

8:45 a.m. ~ Transport to College Ave UMC, ME
 9:30 a.m. ~ Sunday Morning Fellowship, ME
 10:00 a.m. ~ Transport to College Ave UMC, ME
 10:00 a.m. ~ Worship Service, CR/**1960**
 10:30 a.m. ~ Transportation to FUMC, ME
 11:00 a.m. ~ Worship Service, CR/**1960**

Monday • March 23 *Trash & Recycle pick-up*

9:30 a.m. ~ Seated Strength, CR/**1960**
 9:30 a.m. ~ Memory Care Partners Group, **STM**
 10:00 a.m. ~ Fellowship w/ First Assembly of God Church, FHR
 10:30 a.m. ~ Weights 101, CR/**1960**
 11:00 a.m. ~ Rock Steady Boxing, **PF**
 11:00 a.m. ~ Prairie Star Menu Discussion, EC
 11:30 a.m. ~ Sit & Be Fit, CR/**1960**
 1:00 p.m. ~ Parkinson's Exercise Class, CR/**1960**
 1:00 p.m. ~ WTCFiber Connections Hour, EC
 1:30 p.m. ~ God Talk, KSU CL
 7:00 p.m. ~ Community Bingo, CR

Tuesday • March 24

10:00 a.m. ~ ARTful Memories, BR
 10:00 a.m. ~ Mat Yoga, KSU CL
 10:30 a.m. ~ Steady Yourself, CR/**1960**
 11:15 a.m. ~ Chair Yoga, CR/**1960**
 2:00 p.m. ~ 10-Point Pitch Group, GR
 2:00 p.m. ~ Social Circles, PS
 2:00 p.m. ~ Water Media Painting, KSU CL
 3:00 p.m. ~ Coffee Corner, EC
 5:30 p.m. ~ 3rd Floor Supper, BR
 6:00 p.m. ~ KSU Gerontology Class, CR

Wednesday • March 25

9:30 a.m. ~ Seated Strength, CR/**1960**
 10:00 a.m. ~ Walmart/Dillons Shopping Trip, ME
 10:00 a.m. ~ Memory Care Partners Group, FHR
 10:00 a.m. ~ Memory Café, KSU CL
 10:00 a.m. ~ UFM: Look, Learn, & Make, EC
 10:30 a.m. ~ Weights 101, CR/**1960**
 11:30 a.m. ~ Sit & Be Fit, CR/**1960**
 11:30 a.m. ~ Page Turners Book Club, PR
 1:00 p.m. ~ Lenten Lecture: Week Six, EC
 1:30 p.m. ~ Diabetic Wellness Group, FHR
 3:00 p.m. ~ Rock Steady Boxing, CR
 3:00 p.m. ~ Sing-Along, FHR
 3:00 p.m. ~ Line Dancing Lessons, VBL

Wednesday • March 18, *continued*

4:00 p.m. ~ 4th Floor Social, FHR
 5:30 p.m. ~ 1st Floor Supper, MR

Thursday • March 26

7:30 a.m. ~ Men's Bible Study & Breakfast, MR
 9:00 a.m. ~ Messenger Team, VBL
 9:00 a.m. ~ Memory Matters Symposium (AM Session), EC
 10:00 a.m. ~ Mat Yoga, KSU CL
 10:30 a.m. ~ Steady Yourself, CR/**1960**
 11:15 a.m. ~ Chair Yoga, CR/**1960**
 11:30 a.m. ~ Caring Conv. For People w/ PD, FHR
 11:30 a.m. ~ PD Care Partner Social, PS
 12:00 p.m. ~ College Avenue UMC Luncheon, BR
 1:00 p.m. ~ PD Care Partners Group, FHR
 1:00 p.m. ~ Parkinson's Exercise Class, CR/**1960**
 2:30 p.m. ~ Knitting & Crocheting, KR
 2:30 p.m. ~ Card Making with Michelle, FHR
 3:00 p.m. ~ Fanny & Furby, KR
 4:15 p.m. ~ Meadowlark Singers Practice, CR
 5:30 p.m. ~ Memory Matters Symposium (PM Session), EC

Friday • March 27

7:30 a.m. ~ Rock Steady Boxing, **PF**
 9:30 a.m. ~ Seated Strength, CR/**1960**
 10 a.m. to 3 p.m. ~ Meadowlark Market, **MM**
 10:30 a.m. ~ Weights 101, CR/**1960**
 11:30 a.m. ~ Sit & Be Fit, CR/**1960**
 7:00 p.m. ~ Music with Nate McClendon, EC

Saturday • March 28

9:00 a.m. ~ Tai Chi, **1960 only**
 9:30 a.m. ~ Band Bust Exercise Class, **1960 only**
 10 a.m. to 3 p.m. ~ Meadowlark Market, **MM**

Room Abbreviations

1960 , TV Channel 1960	ME, Main Entrance
BR, Bison Room	MM , 120 N. Scenic Drive
CR, Community Room	MR, Manhattan Room
CY, Courtyard	PF , Peakform Wellness Center
EC, Event Center	PR, Patriot Room
FHR, Flint Hills Room	PS, Prairie Star Restaurant
GC, Grosh Cinema	STM , St. Thomas More Church
KR, Kansas Room	VBL, Verna Belle's Lounge
KSU CL, KSU Classroom	WPL , Wamego Public Library



GROSH CINEMA SHOWTIMES

MONDAY TO SATURDAY 1:00 P.M. / 4:00 P.M. / 7:00 P.M.
SUNDAY 2:00 P.M. / 6:00 P.M.

SUNDAY: March 22

THE MAGIC OF BELLE ISLE (2012) PG, 1 hr. 49 min. *Comedy, Drama*

Cast: Morgan Freeman, Virginia Madsen, & Madeline Carroll

Monty Wildhorn, an alcoholic novelist of Westerns, has lost his drive. His nephew pushes him to summer in quiet Belle Isle. He begrudgingly befriends a newly single mom and her three girls who help him find the inspiration to write again.

MONDAY: March 23

RESIDENT REQUEST

BRIGADOON (1954) PG, 1 hr. 48 min. *Classical Musical, Fantasy*

Cast: Gene Kelly, Van Johnson, & Cyd Charisse

Two Americans on a hunting trip in Scotland become lost. They encounter a small village, not on the map, called Brigadoon, in which people harbor a mysterious secret and behave as if they were still living 200 years in the past.

TUESDAY: March 24

PAGE TURNER REQUEST

SNOW FLOWER & THE SECRET FAN (2011) PG-13, 2 hr. *Drama, History*

Cast: Bingbing Li, Jun Ji-hyun, & Vivian Wu

A story set in nineteenth-century China and focusing on the life-long friendship between two girls who develop their own secret code as a way to contend with the rigid social norms imposed on women.

WEDNESDAY: March 25

STILL ALICE (2014) PG-13, 1 hr. 41 min. *Psychological Drama*

Cast: Julianne Moore, Alec Baldwin, & Kristen Stewart

A linguistics professor and her family find their bonds tested when she is diagnosed with Alzheimer's Disease.

THURSDAY: March 26

RESIDENT REQUEST

THE DEPARTED (2006) R *for violence, language, & sexual content*, 2 hr. 31 min. *Crime, Drama*

Cast: Leonardo DiCaprio, Matt Damon, & Jack Nicholson

An undercover cop and a mole in the police attempt to identify each other while infiltrating an Irish gang in South Boston.

FRIDAY: March 27

THE WRONG PARIS (2025) TV-14, 1 hr. 45 min. *Romantic Comedy, Drama*

Cast: Miranda Cosgrove, Pierson Fode, & Madison Pettis

A woman joins a dating show for an art opportunity, thinking that it's in Paris, France, but it's actually in Paris, Texas. She tries to get eliminated until falling for the bachelor complicates her plans.

SATURDAY: March 28

ELEANOR THE GREAT (2025) PG-13, 1 hr. 38 min. *Tragedy, Drama, War*

Cast: June Squibb, Erin Kellyman, & Chiwetel Ejiofor

After a devastating loss, witty and proudly troublesome Eleanor Morgenstein, 94, tells a tale that takes on its own dangerous life.