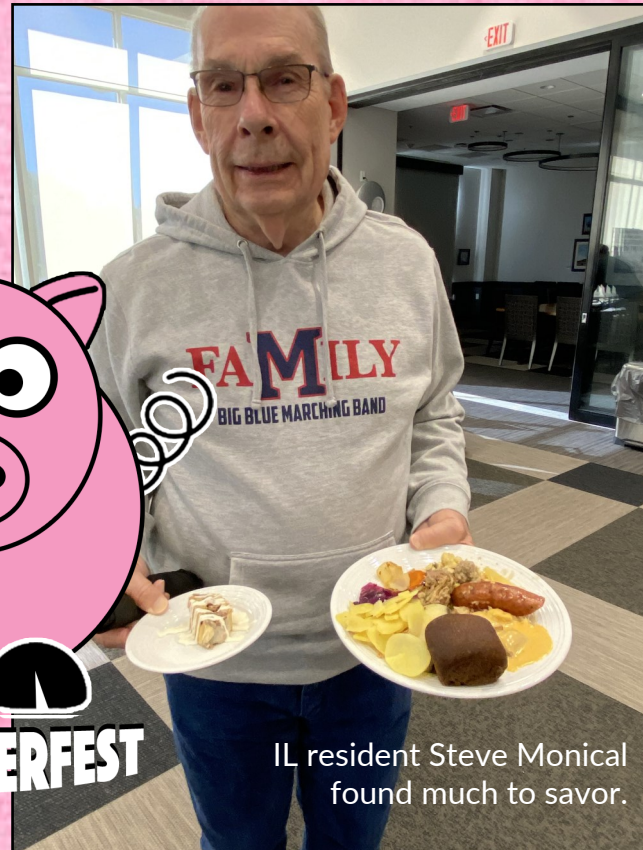
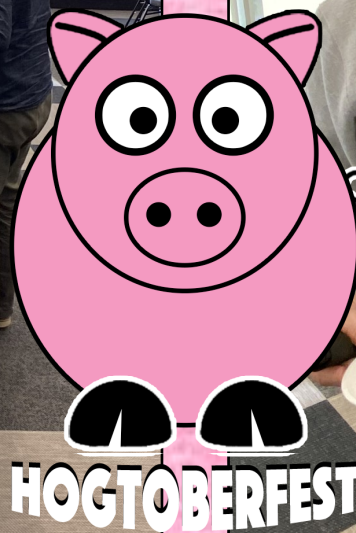




A lunchtime buffet, featuring German entrees and side dishes, drew a steady stream of hungry customers.



IL resident Steve Monical found much to savor.

11th annual event boosts Good Samaritan Fund

by Becky Fitzgerald, Development Director

A week-long celebration at Prairie Star Restaurant and Event Venue to mark the 11th annual HOGtoberfest brought squeal-worthy attention to Meadowlark Foundation's Good Samaritan Fund. Not only did this annual event encourage giving in a variety of ways — food and beverage purchases, raffle tickets, theme T-shirts, donations, and sponsorships — but it also prompted discussions about the Fund's mission: to assist Meadowlark residents who live in a healthcare household and who also have exhausted their financial resources. To these ends, this FOOD, FRIENDS, and

See HOGTOBERFEST, page 5



A musical duo, Mandy Kary and Taylor Kline of the Salina, Kan., area, entertained the dinner guests.

EVENTS & OPPORTUNITIES

Thank You Meadowlark Team!

submitted by Meadowlark residents, Passport members, and friends of Meadowlark

Residents, Passport members, and friends want to express appreciation for your help and kindness. Enclosed is a check that reflects our gratitude for the help you provide in making Meadowlark such a positive place to live. Thanks go to every employee for making Meadowlark a friendly and caring home for residents. We send our best wishes for the coming year and hope to see you next year.

Manhattan Arts Center Classes

Manhattan Arts Center (MAC) has opportunities for art classes, workshops, and theater!

~ Printmaking Workshop on Saturday, Nov. 9, from 2 to 5 p.m. Only \$50!

~ Paper Quilling, a two-week class, on Wednesdays, Dec. 4 and 11, from 6 to 8 p.m. Only \$65!

~ Needle Felting, a two-week class, on Tuesdays, Dec. 10 and 17, from 6 to 8 p.m. Only \$65!

MAC Open Studios Exhibit is open now in the Gallery until Nov 15. The exhibit features work from our 2D and 3D open art studios. Come take an art break at the MAC!

Get your tickets today for *Elements*, a new contemporary dance show at the MAC on Nov. 22 and 23. Come experience this unique and beautiful story, told through dance. Tickets are on sale now.

Shanna in a Dress, an award-winning folk musician, is coming to the MAC on Dec. 5! Shanna will lead a VIP workshop in songwriting and storytelling from 5:30 to 7 p.m., and then a performance of uplifting, original folk music at 7 p.m.

Get tickets or register for classes and performances at www.manhattanarts.org or call (785) 537-4420. Follow MAC on Facebook and Instagram for all the latest updates!

UFM Class: World War I

UFM Lifetime Learning presents *World War I: Europe's Collective Suicide*. This three-session course will conclude with the final session meeting Wednesday, Nov. 13, from 6:30 to 8 p.m. in the Community Room.

Page 2

Help with Medicare Open Enrollment

Wednesdays, from 9 a.m. to 1 p.m.

James Beck, Meadowlark resident and Shick Counselor, is available to meet with residents one-on-one to help navigate the Medicare Enrollment process.

Hour-long appointments are available each Wednesday through Dec. 4 from 9 a.m. to 1 p.m. in the Patriot Room. Residents who are interested in making an appointment can sign up in the Blue Book at the Hospitality Desk.

Annual Youth Piano Passion Group

Friday, Nov. 8, at 7 p.m.

You're invited to gather in the Community Room for the fourth annual Youth Piano Passion Group with Ethan Xin at 7 p.m. Friday, Nov. 8. This group is comprised of performers from a variety of age groups. Their mission is to serve and spread the love of music throughout the community. There will be homemade snacks and drinks for all to enjoy. All are welcome!

Worship Service

Sunday, Nov. 10, at 10:30 a.m.

Join Pastor Melanie Nord for worship at 10:30 a.m. Sunday, Nov. 10, in the Community Room/Chapel. Pastor Melanie will continue the worship series titled "Understanding Our Bible." This week Pastor Melanie will explore the book of Ezekiel. All are welcome to attend.

The Classic K-9 Show

Monday, Nov. 11, at 1 p.m.

Meadowlark is excited to welcome "The Classic K-9 Show" on Monday, Nov. 11, at 1 p.m., in the Event Center! Get ready for a great show with Canine Freestyle Dancing with choreography, props, maneuvers, and tricks. But that's not all! Prepare to be amazed by balancing acts, ladder climbing, chest vaulting, barrel walking, and much more! This is a high-flying event; you don't want to miss it!

Parkinson's Disease: More Than Motor Symptoms

Tuesday, Nov. 12, at 2 p.m.

Join us for a presentation by Dr. Daniel Cannone, from Athens, Ohio, to learn about non-motor symptoms of Parkinson's disease (PD), including

EVENTS & OPPORTUNITIES

hallucinations and delusions and how your healthcare provider can support you through these symptoms. This is a free presentation open to all individuals affected by PD, nurses, and other medical providers. We will meet in the Meadowlark Community Room. Refreshments will be provided.

Food & Fund Drive

Wednesday, Nov. 13, at 10:30 a.m.

The Meadowlark Ambassadors will be hosting a Food & Fund Drive to benefit the Flint Hills Breadbasket on Nov. 13 in the Kansas Room.

The Flint Hills Breadbasket is a local organization in Manhattan that has been distributing food to ensure no one in the community goes hungry for more than 35 years. They rely heavily on donations, and their mission is to provide reliable access to healthy food, build connections with community partners, and empower neighbors to meet their basic needs. They have an average of 70 household visits per day and 90 new families per month, according to their 2023 Impact Report.

If you would like to donate food or give a monetary donation, please stop by the Kansas Room between 10:30 a.m. to 12:30 p.m. to do so.

Please consider donating the following items: rice, beans, lentils, canned tomatoes, flour, sugar, peanut butter, ramen, instant mashed potatoes, ready-to-eat soups, cake/brownie mix, pancake mix, canned meat and fruit/veggies, crackers, pudding, or Jell-O.

Ladies Luncheon

Thursday, Nov. 14, at 11:30 a.m.

All Meadowlark residents and Passport members are invited to attend the Ladies Luncheon at 11:30 a.m. Thursday, Nov. 14. Ryan Barton, a graphic design director of the Sports Art department at K-State, will be the speaker. The luncheon will consist of an open-faced chicken salad pineapple melt on an English muffin, butternut squash soup, and butter-pecan ice cream with Heath Bar crunch cookie for \$12.

If you are unable to eat the published lunch, please indicate what you would like as a substitute beside your name when you sign up. Please register in the Blue Book at the Hospitality

Desk by 10 a.m. Wednesday, Nov. 13. Come and visit with old friends and make new ones!

Cocktails & Conversations

Thursday, Nov. 14, at 11:30 a.m.

All are invited, weather permitting, in the Meadowlark Courtyard on Thursday, Nov. 14, from 2:30 to 4 p.m. for Cocktails & Conversations. The drink of the evening is a Caramel Apple Cider. There will be alcoholic and non-alcoholic option available.

Blood Pressure Check

Thursday, Nov. 14, at 1 p.m.

Meadowlark Home Care hosts a monthly Blood Pressure Clinic. The next scheduled clinic is Thursday, Nov. 14, at 1 p.m. in the Kansas Room. No registration required.

Knitting & Crocheting Group

Thursday, Nov. 24, at 2:30 p.m.

Are you interested in learning how to knit or crochet? Or maybe you have ongoing projects you'd like to work on? Whether you are just beginning or have years of experience, join other yarn creatives in the Bison Room at 2:30 p.m. Thursday, Nov. 24 for a fun, social, creative opportunity. All skill levels are welcome!

Saturday Shopping Trip

Saturday, Nov. 16, at 10:30 a.m.

The next scheduled trip is Saturday, Nov. 16, with transportation going to Hobby Lobby and Dollar Tree East. The bus will depart from the Village Entrance at 10:30 a.m., and the return time is set for 11:45 a.m. Please sign up in the Blue Book to participate.

KSU Football Watch Party

Saturday, Nov. 16, at TBD

Join us in the Kansas Room, Verna Belle's Lounge, and Prairie Star Restaurant Bar on Saturday, Nov. 16, as we watch our K-State Wildcats take on new Big 12 members Arizona State. Light refreshments will be served during the game. The time of the game has not yet been announced, but information will be updated in the Messenger when it is released.

See EVENTS, page 4

EVENTS, from page 3

Holiday Recital

Monday, Nov. 18, at 6 p.m.

On Monday, Nov. 18, at 6 p.m. in the Community Room, the Voice Studio of Amy Rosine presents a "Holiday Recital." All are invited for an evening of entertainment to kick off the Holidays.

Prairie Star Writing Group

Tuesday, Nov. 19, at 1 p.m.

Interested in joining the writing group at Meadowlark? Prairie Star Writers is led by Cathy Hedge. The group meets on the first and third Tuesdays. The next meeting is set for 1 p.m. Tuesday, Nov. 19, in the Patriot Room.

The Nov. 19 session is titled, "Launching into Holiday Season." I think the ancients had great ideas. When winter approached and they knew it would hit hard enough to chill you until summer, they had a solution. Have a party! Should it be a bacchanalia? Burn a tree? Or dress in your finest and dance until dawn? Anything to dispel the isolation of ice. Sometimes that meant festive decorations, guests, songs, and often plenty of food.

As the holidays approached, what were some of your family or friend traditions that highlighted the season? Were they large, frantic affairs or quiet, intimate gatherings? If, instead of celebration, the season was difficult, what did you do to ease your spirit when the chaos began? Do you still approach the holidays in much the same way, or do you prefer to sit back, relax, and remember? In any case, I wish you a Happy Thanksgiving!

Volunteer & Tech Helper

Tuesday, Nov. 19, at 4 p.m.

Deborah Goins is a passport member and new Meadowlark volunteer. She works in K-State's Arts & Sciences Dean's Office as an Instructional Designer, where she specializes in helping faculty and students improve their online experiences. She is looking to become more connected to the Meadowlark community and is interested in helping residents with their technology questions as an IT Helper. She plans to come on the 3rd Tuesday every month from 4 to 5 p.m. in the Kansas Room (aka Game Room), but may come more frequently if there is a need.

She has degrees in business management with an emphasis in information systems and accessible instructional design. Technology troubleshooting, training, and customer service are her specialties. She has provided technology assistance to persons with various comfort levels for over a decade. Not only that, but she also understands how frustrating technology can be and provides a great deal of patience and understanding to those she is assisting.

Deborah's next visit will be on Tuesday, Nov. 19. She looks forward to building connections through this opportunity and meeting others, so be sure to stop by and say "hello" when she is here each month.

Parkinson's Care Partner Summit Series

Wednesday, Nov. 20, at 12 p.m.

The Parkinson's Foundation will be hosting the virtual Care Partner Summit, where care partners, healthcare professionals, and advocates come together to share resources, strategies, and support for those caring for someone with Parkinson's disease. This summit is designed to empower care partners with valuable insights, practical tools, and a supportive community.

Meadowlark Parkinson's Program is offering an opportunity to watch these real-time, virtual sessions together. We will have our own discussions, but join the Foundation for all other aspects of the Summit. Reservations are not required. There is one remaining scheduled sessions for the series:

~ "The Essentials Toolbox: Wednesday, Nov. 20, from 12 to 1 p.m., in the KSU Classroom.

The Care Partner Summit is for anyone supporting someone with Parkinson's disease. Whether someone is new to the role or has been caring for a while, these webinars will offer valuable strategies for managing Parkinson's. Participate in one or all of the webinars. If you have questions, please contact Michelle or Katie at (785) 323-3899.

Tau Beta Sigma

Thursday, Nov. 21, at 7 p.m.

Tau Beta Sigma is excited to present their Christmas Concert on Thursday, Nov. 21, at 7 p.m., in the Event Center. Tau Beta Sigma, a national honorary music sorority, strives to support collegiate bands and promote women in the arts! At Kansas State University, they serve the

community, as well as the marching and concert bands, and have members from a variety of majors! They look forward to spreading holiday cheer by playing the music of the Christmas season, as well as some K-State school songs!

Ice Cream Social

Friday, Nov. 22, at 3 p.m.

I scream, you scream, we all scream for ICE CREAM! The monthly ice cream social is set for 3 p.m. Friday, Nov. 22, in the Kansas Room. Enjoy a scoop (or two!) and fellowship with friends. This opportunity is offered every fourth Friday.

Holiday Touchdown: A Chiefs Love Story

Monday, Dec. 2, at 2 p.m.

You read that right! On Monday, Dec. 2, at 2 p.m., in the Event Center, there will be a watch party featuring the Hallmark movie "Holiday Touchdown: A Chiefs Love Story." We will have hot chocolate, a popcorn assortment, and will also play Hallmark movie bingo during the movie. More information to come!

HOGtoberfest, from page 1

FUNdraising event, Oct. 19 through Oct. 25, was a HOG-tastic success. The event generated more than \$14,700 in revenue and gift-in-kind contributions to date; a donation of 10% of food and beverage purchases from Mr. K's Mobile Kitchen is still to be finalized. Mr. K's food truck was parked at Meadowlark Market on Friday and Saturday, Oct. 18 and 19.

Here are a two additional numbers and a few more winners:

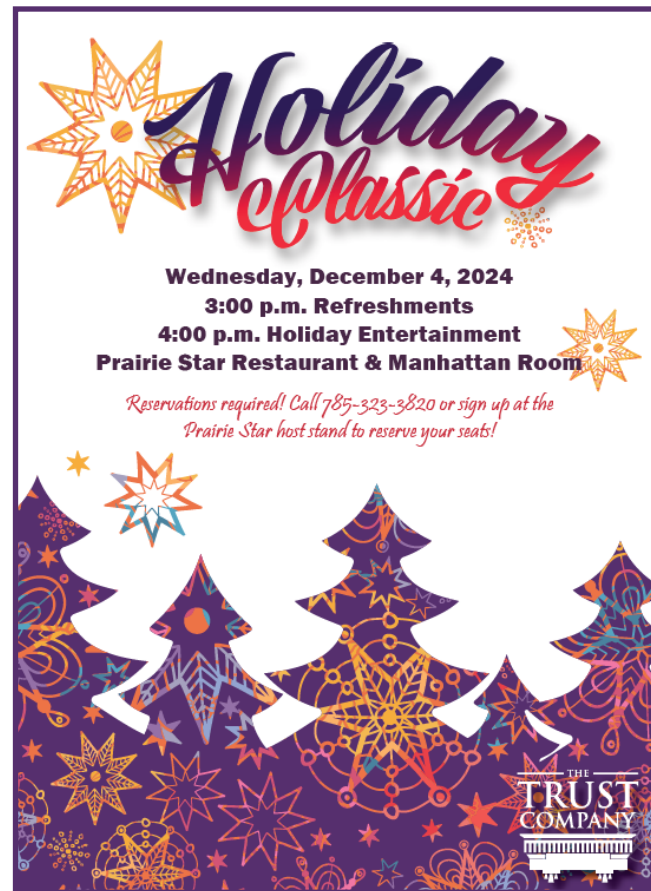
1,334: Number of raffle tickets sold at \$5 each.

\$1,672.15: Amount of donations prompted by the event, to date.

Alicyn Willich, concierge, won a \$100 Visa gift card for selling the winning \$2000 raffle ticket, and IL resident Karen Matthews was this year's top ticket seller. She earned a \$100 Meadowlark Market gift certificate.

For several years, Meadowlark employees who purchase raffle tickets have been eligible for a 5th prize, available only to staff members. Taylor Wheelock, Meadowlark's Assistant Administrator, won a personalized parking spot for a year at the on-campus location of her choice.

Meadowlark Foundation is grateful to the many who contributed to the success of HOGtoberfest. This includes sponsors, raffle ticket, T-shirt, and/or food and beverage buyers, donors, volunteers, musicians, and the Prairie Star Restaurant team. Thank you!



Holiday Classic

Wednesday, December 4, 2024
3:00 p.m. Refreshments
4:00 p.m. Holiday Entertainment
Prairie Star Restaurant & Manhattan Room

Reservations required! Call 785-323-3820 or sign up at the Prairie Star host stand to reserve your seats!

THE TRUST COMPANY

CASH & MORE RAFFLE WINNERS!SULTS



Jayne Minton and Becky Fitzgerald pose with IL resident **Jim Sharp**, winner of a HOG-tastic prize: \$2000!

2nd prize: \$500 Kansas City Getaway, **Elizabeth Wells**, daughter of a Lyle House resident.

3rd prize: \$300 Meadowlark Market shopping spree, **Chelsea Bramhall**, Wroten House Clinical Coordinator

4th prize: \$150 restaurant gift cards, **Ronnie Grice**, Board of Trustees member.

Community Bulletin



MEADOWLARK

Foundation

Gifts benefiting the Good Samaritan Fund, Helping Hands Fund, Meadowlark Memory Program, Meadowlark Parkinson's Program, and the Nature & Nurture Campaign were received by Meadowlark Foundation during the month of October.

Memory of

Dorothea Boutz
Joe Ann Moore

Honor of

HOGtoberfest event team
Meadowlark's Maintenance Team

Employee of MEADOWLARK the Month



Larry Couchman, Sloan House RN

Sponsored by  Meritrust
CREDIT UNION

In our Spooky Era!
The Duggan family dressed up as different Taylor Swift eras!



Pat Hook embraced the spirit of Halloween and donned her witchy costume complete with a black cat!



Bippity Boppity Boo!
Kesiah Winter's children enjoyed Halloween dressed as Cinderella & Gus Gus!



Art Engagement *from the* **Beach Museum of Art**

Creating a focal point in a composition lets the artist guide how the viewer looks at the artwork. An artist might use contrast in color, value, texture, shape or form to create a focus. They may frame the area or object. The important item might be isolated within the composition or treated in a very unusual manner. Placement of the targeted object is a common technique. The artist may place something of importance in the bottom or top third of the piece, or just off center. As you look at this painting, do you observe a focal point? If yes, what did the artist do to draw your eye there first? Where does your eye move through the artwork from there?



Theodore W. Hawkins (United States, 1911 - 1969)
Farm, ca. 1937
Oil on canvas board
KSU, Marianna Kistler Beach Museum of Art, Federal Arts Project
2003.90

RESTAURANT **SPECIALS**

<p>Sunday, Nov. 10</p>	<p>Sunday Brunch Brunch Menu available from 9 a.m. to 2 p.m.</p>	<p>\$14 Dinner BBQ Meatballs Scalloped Potatoes Roasted Broccoli</p>
<p>Monday, Nov. 11</p>	<p>\$11 Lunch Chicken Enchiladas Mexican Rice</p>	<p>\$14 Dinner Smothered Pork Chop <i>with Mushroom-Onion Gravy</i> Mashed Potatoes Green Beans</p>
<p>Tuesday, Nov. 12</p>	<p>\$11 Lunch Fish Tacos Cilantro Lime Rice</p>	<p>\$15 Dinner Beef & Italian Sausage Lasagna Garlic Bread Caesar Salad</p>
<p>Wednes- day, Nov. 13</p>	<p>\$11 Lunch Meatloaf Sandwich Pub Chips</p>	<p>\$15 Dinner Chicken Cordon Bleu Rice Pilaf Roasted Broccoli</p>
<p>Thursday, Nov. 14</p>	<p>\$9 Lunch Hot Ham & Cheese Tomato Soup</p>	<p>\$16 Dinner Pork Tenderloin Mac & Cheese Brussel Sprouts</p>
<p>Friday, Nov. 15</p>	<p>\$11 Lunch Potato Bar</p>	<p>\$16 Dinner Baked Catfish Cheese Grits Coleslaw</p>
<p>Saturday, Nov. 16</p>	<p>\$11 Lunch Hot Turkey Melt Pea Salad</p>	<p>\$11 Dinner Boneless Wings Tater Tots Carrots & Celery Sticks</p>

Weekly Opportunities Calendar Nov. 10 to Nov. 16

Sunday • Nov. 10 *Put your trash at the curb!*

10:30 a.m. ~ Worship Service, CR
10:30 a.m. ~ Transportation to FUMC, VE

Monday • Nov. 11 *Trash pick-up*

9:30 a.m. ~ Seated Strength, CR/**1960**
10:30 a.m. ~ Weights 101, CR/**1960**
11:00 a.m. ~ Rock Steady Boxing, **BF**
11:30 a.m. ~ Sit & Be Fit, CR/**1960**
11:30 a.m. ~ Meadowlark Valley Luncheon, BR
1:00 p.m. ~ Parkinson's Exercise Class, CR/**1960**
1:00 p.m. ~ The Classic K-9 Show, EC
1:30 p.m. ~ God Talk, KSU CL
1:45 p.m. ~ Parkinson's Voice Class, CR
2:00 p.m. ~ Change & Loss Support Group, FHR
7:00 p.m. ~ Community Bingo, CR

Tuesday • Nov. 12

10:00 a.m. ~ Memory Activities Class, EC
10:15 a.m. ~ Mat Yoga, KSU CL
10:30 a.m. ~ Steady Yourself, CR/**1960**
11:15 a.m. ~ Seated Stretch & Stability, CR/**1960**
12:00 p.m. ~ 4th Floor Luncheon, MR
2:00 p.m. ~ 10-Point Pitch Group, KR
2:00 p.m. ~ Social Circles, PS
2:00 p.m. ~ PD: More Than Motor Symptoms, CR
3:00 p.m. ~ Coffee Corner, EC

Wednesday • Nov. 13

9:00 a.m. ~ Medicare Open Enrollment, PR
9:30 a.m. ~ Seated Strength, CR/**1960**
10:00 a.m. ~ Walmart/Dillons Shopping Trip, VE
10:00 a.m. ~ Mem. Care Partners Supp. Grp, FHR
10:00 a.m. ~ Memory Café, KSU CL
10:30 a.m. ~ Weights 101, CR/**1960**
10:30 a.m. ~ Food & Fund Drive, KR
11:30 a.m. ~ Lutheran Luncheon, BR
11:30 a.m. ~ Sit & Be Fit, CR/**1960**
3:00 p.m. ~ Rock Steady Boxing, CR
3:00 p.m. ~ Sing-Along, FHR
6:30 p.m. ~ UFM Class: World War I, CR

Thursday • Nov. 14

9:00 a.m. ~ Messenger Team, KSU CL
10:00 a.m. ~ Mat Yoga, FHR
10:30 a.m. ~ Steady Yourself, CR/**1960**
11:15 a.m. ~ Seated Stretch & Stability, CR/**1960**
11:30 a.m. ~ Ladies Luncheon, PS

Thursday • Nov. 14

11:30 a.m. ~ PD Care Partner Lunch, PS
11:30 a.m. ~ Cocktails & Conversations, CY
11:30 a.m. ~ Caring Conv. For People w/PD, FHR
1:00 p.m. ~ Parkinson's Exercise Class, CR/**1960**
1:00 p.m. ~ Blood Pressure Check, GR
1:00 p.m. ~ PD Care Partner Support Group, FHR
2:30 p.m. ~ Knitting & Crocheting, BR
4:00 p.m. ~ Meadowlark Singers Practice, CR
5:30 p.m. ~ Eastside Supper, BR

Friday • Nov. 15

7:30 a.m. ~ Rock Steady Boxing, **BF**
9:30 a.m. ~ Seated Strength, CR/**1960**
10:30 a.m. ~ Weights 101, CR/**1960**
11:30 a.m. ~ Sit & Be Fit, CR/**1960**
2:30 p.m. ~ Fridays with Furby, KR
3:00 p.m. ~ Catholic Rosary, CR

Saturday • Nov. 16

9:30 a.m. ~ Band Bust Exercise Class, **1960 only**
10:30 a.m. ~ Depart for Shopping Trip, VE
TBD ~ K-State Watch Party, PS

Room Abbreviations

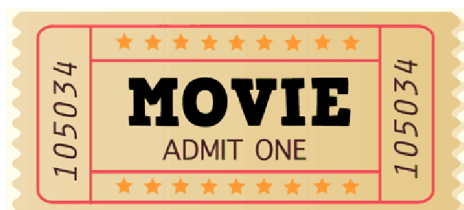
1960 , TV Channel 1960	KSU CL, KSU Classroom
BF , Body First	MM , 120 Scenic Drive
BR, Bison Room	MR, Manhattan Room
CR, Community Room	PR, Patriot Room
CY, Courtyard	PS, Prairie Star Restaurant
EC, Event Center	MSC , Manhattan Sr. Center
FHR, Flint Hills Room	VBL, Verna Belle's Lounge
GC, Grosh Cinema	VE, Village Entrance
KR, Kansas Room	WPL , Wamego Public Library

Thanksgiving Dinner

Thursday, November 28

Reserve your spot at Prairie Star
Seatings from 11 a.m. to 1:30 p.m.
\$23 per person





GROSH CINEMA SHOWTIMES

MONDAY TO SATURDAY 1:00 P.M. / 4:00 P.M. / 7:00 P.M.
SUNDAY 2:00 P.M. / 6:00 P.M.

SUNDAY: Nov. 10

HAROLD & THE PURPLE CRAYON (2024) PG 1 hr. 30 min. *Imaginative, Exciting, Family*

Cast: Zachary Levi, Lil Rel Howery, & Zooey Deschanel

Harold can draw anything into existence in his magical, storybook world., but when his narrator disappears, he must leave home to find him.

MONDAY: Nov. 11

RESIDENT REQUEST

TO KILL A MOCKINGBIRD (1962) NR, 2 hr. 9 min. *Family, Thriller*

Cast: Gregory Peck, John Megna, & Frank Overton

Atticus Finch, a widowed lawyer in Depression-era Alabama, defends a Black man against an undeserved rape charge and tries to educate his young children against prejudice.

TUESDAY: Nov. 12

JUDY (2019) PG-13, 1 hr. 58 min. *Sentimental, Nostalgic, Bittersweet*

Cast: Renee Zellweger, Jessie Buckley, & Finn Wittrock

A captivating story of the last year of Judy Garland's life, based on a hit Broadway play.

WEDNESDAY: Nov. 13

WOMAN OF THE HOUR (2024) R *for language, violence, and drug use*, 1 hr. 35 min. *Chilling*

Cast: Anna Kendrick, Daniel Zovatto, & Tony Hale

An aspiring actress crosses paths with a prolific serial killer in '70s LA when they're cast on an episode of "The Dating Game." Based on a true story.

THURSDAY: Nov. 14

ROBIN HOOD (2010) PG-13, 2 hr. 20 min. *Rousing*

Cast: Russell Crowe, Cate Blanchett, & Max von Sydow

In this big-budget adaptation, Robin happens upon the dying Robert of Loxley and promises to return his sword to his family in Nottingham.

FRIDAY: Nov. 15

BABY'S DAY OUT (1994) PG, 1 hr. 40 min. *Comedy, Adventure*

Cast: Joe Mantegna, Lara Flynn Boyle, & Joe Pantoliano

Three bumbling kidnappers attempt to nab the baby of a rich couple.

SATURDAY: Nov. 16

THE WHALE (2022) R *for language, some drug use and sexual content*, 1 hr. 56 min. *Dark, Emotional*

Cast: Brendan Fraser, Sadie Sink, & Hong Chau

As online writing teacher grapples with failing health from weight issues, self-isolation, and grief as he tries to reconnect with his teenage daughter.