

# Out of the Mouths of Babes

## ***Nurturing Leadership, Collaboration, & Self-Awareness***

*submitted by Sarah Duggan, Comm. Relations Dir.*

Recently, I was visiting with my middle daughter, Eilish (ay-lish), while we waited for my oldest to finish play rehearsal at Manhattan Arts Center. Eilish, who is in first grade at Bluemont Elementary, was sharing about group projects that her teacher assigned.

"I don't really like working in big groups – it's too many people," she said matter-of-factly. "Actually, I'd rather do the work on my own, but if I have to work in a group, I want it to be with one or two people."

I asked her if they ever work in bigger groups, and she said there are 20 people in her class and sometimes the teacher splits them into two groups. "Then there are 10 people in the group, Mom!"

"You are going to be doing group projects a lot as you go through school," I told her. "Why don't you like the group of 10?"

"Because, I don't have enough jobs for everyone in a big group." The wisdom behind this sentiment is both endearing and enlightening. Never mind the fact that now I know no matter the size of the group, she sees herself as the leader.

### **The Essence of Leadership**

Leadership, in its purest form, is the ability to guide and inspire others towards a common goal. Eilish demonstrates an innate leadership quality—one that seeks efficiency and purpose in group dynamics. Her inclination to lead and allocate tasks highlights the importance of recognizing individual strengths within a team. In our Meadowlark community, where diverse talents abound, this insight resonates profoundly.



Eilish Duggan, age 6

I encourage each of you to reflect on your own leadership qualities. Whether you find joy in orchestrating events, guiding discussions, or simply offering a kind word, your unique leadership style enriches our vibrant community.

### **Embracing Group Work**

While my middle daughter may prefer smaller groups to ensure everyone has a role, the beauty of Meadowlark lies in our collective diversity. Group work presents an opportunity to blend different perspectives, skills, and experiences. It is a chance to learn, grow, and appreciate the richness of collaboration.

As we engage in group activities within our community, let us celebrate the diversity that each member brings to the table. Consider embracing the role of a supportive team member, recognizing the strengths of others, and finding joy in collective accomplishments.

### **The Journey to Self-Awareness**

Eilish's preference for smaller groups also sheds light

**See BABES, page 6**

## EVENTS & OPPORTUNITIES

### Manhattan Arts Center Classes

Manhattan Arts Center (MAC) has opportunities for art classes, workshops, and theater! Tickets are available for the Roger & Hammerstein classic musical about love and conquering prejudices, "South Pacific," on April 19-21, 26-28, and May 3-5. Visit [www.manhattanarts.org](http://www.manhattanarts.org) or call (785) 537-4420 on weekday afternoons to learn more.

### Exercise classes, canceled

All exercise classes are canceled for Friday, March 22, because of to a private event. Classes will be available that day via television channel 1960 at the regular class times.

### Ides of March

**Friday, March 15, at 5:30 p.m.**

You're invited to the Ides of March at 5:30 p.m. Friday, March 15, in the Event Center. The event will feature entertainment by the local Readers Theater actors of *Julius Caesar*.

Attendees will enjoy a three-course meal, including a Caesar salad made fresh at the table; veal saltimbocca, saffron couscous, carrots, leeks, and asparagus; and Roman apple cake. Reservations are required and can be obtained by

visiting Prairie Star's host stand or call (785) 323-3821. The cost to attend is \$32 per person.

### Shopping at Hobby Lobby & Dollar Tree

**Saturday, March 16, at 10:30 a.m.**

The next scheduled trip is Saturday, March 16, with transportation going to Hobby Lobby and Dollar Tree East. The bus will depart from the Village Entrance at 10:30 a.m., and the return time is set for 11:45 a.m.

Next month's trip will travel to Target and Dollar Tree West on Saturday, April 20. Please sign up in the Blue Book to participate.

### St. Patrick's Day Special Meal

**Sunday, March 17**

Prairie Star will have a delicious St. Patrick's Day special **available all day** on Sunday, March 17! The meal will include corned beef and cabbage with boiled potatoes and Bailey's cheesecake. The cost of the dinner is \$18 per person.

### Worship Service

**Sunday, March 17, at 10:30 a.m.**

Join Pastor Melanie Nord for worship at 10:30 a.m. Sunday, March 17, in the Community Room/Chapel. Pastor Melanie will continue the worship

series in observance of the Lenten season titled, "Give Up Something Bad for Lent." This week, the sermon is titled, "Give Up Bad Habits." All are welcome to attend.

### Monarch Alarm System Testing

**Monday, March 18**

Our alarm company will be on campus Monday, March 18, to test the alarm system in the Monarch. The company representatives will need to enter every apartment to test detectors. They will be escorted by a member of the Meadowlark Maintenance team.

### Lenten Study Group

**Monday, March 18, at 6 p.m.**

Join Pastor Melanie on Mondays in the KSU Classroom as we continue the discussion around trying to give up something *bad* for Lent. From discouragement, negativity to apathy, we'll discuss the parts of our life



Manhattan High School StuCo

# Shoe Drive Fundraiser

**March 18-22**

**Both New & Used Shoes Accepted**  
Rollarblades and Ice Skates will NOT be accepted

Place your shoe(s) in the Donation Drop Off container, across from the Lounge.

Funds2Orgs collects the shoes from MHS, and ships them to micro-entrepreneurs worldwide so they can sell the shoes in their local markets and help themselves out of poverty.

## EVENTS & OPPORTUNITIES

and personality that are keeping us from being our best self. All are welcome.

### **Prairie Star Writers Group**

**Tuesday, March 19, at 2 p.m.**

Interested in joining the writing group at Meadowlark? Prairie Star Writers invites you to attend the next meeting at 2 p.m. Tuesday, March 19, in the Patriot Room.

The March 19 session is titled, "Life Never Ceases to Amaze Me!" Just when we think we have seen, learned, survived, and enjoyed everything possible, that's when the big surprises come. Some are exhilarating and some agonizing, but often when we least expected them. Join us to write and share about times when change has taken your breath away. Writers is led by Cathy Hedge. The group meets on the first and third Tuesdays.

### **FUMC Communion**

**Wednesday, March 20, and 9 a.m.**

Join Pastor Donna and Pastor Courtney from First United Methodist Church at 9 a.m. Wednesday, March 20, in the Bison Room to receive communion. The opportunity is open to anyone wanting to invite Christ into his or her heart.

### **LADIES ONLY! Pelvic Floor Presentation**

**Wednesday, March 20, at 10 a.m.**

Meadowlark ladies are invited to attend a groundbreaking *Ladies-Only* Pelvic Floor Presentation at Meadowlark's Grosh Cinema on Wednesday, March 20, at 10 a.m. This opportunity is hosted by EMPressions Bio, owned by the experienced Angie Husted RN, BSN. With an impressive 22-year background as a Labor and Delivery Nurse, followed by 16 years as a Clinical Informatics Nurse, Health and Wellness Nurse, and Pain Management Nurse, Angie brings a wealth of expertise to the world of women's health.

The journey began with Angie's initial quest for wellness, aimed at complementing physical therapy and pain management for a holistic approach to building muscle, reducing pain levels, and enhancing overall well-being. Her vision led to the establishment of a medical gym, primarily focused on aiding pain management patients in strengthening core muscles, enabling them to participate in physical therapy seamlessly.

Over the past year, EMPressions Bio has expanded its arsenal of devices, offering a diverse range of treatments to support various body parts. Don't miss this empowering presentation designed exclusively for women, offering valuable insights into pelvic floor health.

### **Northview Elementary Choir**

**Wednesday, March 20, at 1:45 p.m.**

The Northview Elementary "Jammin" North Stars Choir will perform in the Event Center at 1:45 p.m. Wednesday, March 20. All are encouraged to enjoy the musical entertainment from this group of young people.

### **Artist Discussion with the Beach**

**Wednesday, March 20, at 4 p.m.**

Join Kim Richards from Beach Museum of Art for *Faith Ringgold: A Storytelling Artist*, at 4 p.m. Wednesday, March 20, in the Bison Room. Ringgold is a painter, author, and mixed-media sculptor. Many of her paintings have evolved into story quilts. These pieces were her vehicle to publish words without editing. Come view her dynamic and colorful creations.

### **Technology Help Drop In**

**Thursday, March 21, at 9 a.m.**

Are you new to technology or need help with existing computer questions? Take advantage of one-on-one help with tablets, laptops, and phones. This opportunity is offered by Wandean Rivers with Manhattan Public Library every third Thursday from 9 to 11 a.m. in the Game Room.

### **Card Making with Michelle Lehmer**

**Thursday, March 21, at 2:30 p.m.**

The next Card Making with Michelle Lehmer class will occur on Thursday, March 21, at 2:30 p.m. in the Flint Hills Room.

### **Memory Matters Symposium 2024**

**Thursday, March 21, at 5 p.m.**

The 2024 Memory Matters Symposium begins at 5 p.m. Thursday, March 21, in the Event Center. The goal of this free event, offered by

See EVENTS, page 4



## **EVENTS, from page 3**

the Meadowlark Memory Program, is to provide outreach and education about dementia and Alzheimer's to those in the Flint Hills region. This year, the symposium will also highlight the latest about creating a lifestyle to encourage prevention and/or delay the onset of cognitive changes while also helping to encourage engagement and understanding. A key component is to help destigmatize cognitive decline and changes. This year we are honored to recognize Meadowlark resident Robert Reeves, who is underwriting this event in memory of his wife, Sue.

The public is invited; reservations are not required. Brain-healthy food will be available.

Timothy Steele, Ph.D. is the first presenter of the evening. Steele's presentation, "*Hearing, Memory, and Living Your Best*," will help us understand how hearing, memory, and cognition are connected. Learning about prevention and/or delaying the onset of cognitive deficits through a proactive lifestyle arms us with hope.

After his presentation, there will be a brief exercise break and opportunity to visit with members of the Meadowlark Memory Leadership Team and our speakers. We will then learn from Alyssa M. Lanzi, Ph.D., CCC-SLP about "*Brain-Healthy Strategies to Help Adults Maintain Their Independence and Slow the Onset of Dementia*." Lanzi's presentation is the perfect pair to Steele's as she will educate us about Mild Cognitive Impairment (MCI), lifestyle prevention and wellness changes, and maximizing our current abilities to remain independent as long as possible.

At the conclusion of the event, Dr. Matthew Floersch, Meadowlark Memory Program Medical Advisor, members of the Meadowlark Memory Leadership Team, and the presenters will be available for questions. If you are unable to attend in person, you may join us via Zoom. Contact Michelle or Katie for the link. We look forward to another great year of learning and empowerment!

## **Ice Cream Social**

**Friday, March 22, at 3 p.m.**

I scream, you scream, we all scream for ICE CREAM! The monthly ice cream social is next week at 3 p.m. Friday, March 22, in Verna Belle's Lounge. Enjoy a scoop (or two!) and fellowship

with friends. This opportunity will be offered every fourth Friday.

## **Vinyl Night with Domingo**

**Friday, March 22, at 6:45 p.m.**

Vinyl Night with Domingo will be in the Courtyard at 6:45 p.m. Friday, March 22! Come listen to some good tunes as we gather around the fireplace and enjoy an evening outdoors.

## **Palm Sunday Worship**

**Sunday, March 24, at 10:30 a.m.**

Pastor Melanie Nord invites you to a very special Palm Sunday observance as we remember Jesus' triumphant entry into Jerusalem. We'll have a Palm Processional and guest musicians Ryan McClure and JP Scheele. Ryan is a sophomore at KSU studying Civil Engineering, and JP is studying Mechanical Engineering. Both are from Manhattan and excited to help amplify the Palm Sunday worship experience. All are welcome to this special service, which marks the beginning of our Holy Week.

## **New Theater Trip**

**Wednesday, March 27, depart at 9 a.m.**

Meadowlark is offering a trip to the New Theatre Restaurant located in Overland Park, Kan., on Wednesday March 27. The show for the day is *ELVIS: Aloha from Vegas!*, which follows the King's musical journey during the 1970s. It was a period of reinvention, kicking off a seven-year annual residency at the International Hotel in Las Vegas, running through the sold-out shows at Madison Square Gardens, and culminating in a historic international live satellite broadcast from Hawaii, all featuring unforgettable songs such as "Burning Love," "Suspicious Minds," and of course, "Can't Help Falling in Love."

The group will depart from the Village Entrance at 9 a.m. Restroom breaks during the trip will be accommodated, if needed. The cost of the trip is \$56 per person, and includes transportation, the show, and the meal at the theater. A sign-up sheet is in the Blue Book at the Hospitality desk. For questions, call Monte Spiller at (785) 323-3801.

## **Maundy Thursday Worship**

**Thursday, March 28, at 7 p.m.**

At this service, we'll study and ponder the last supper. What might Jesus have felt during that fateful meal? What might the Disciples have understood about the significance of this supper?

Retired Rev. Jim Reed will assist Pastor Melanie Nord in Holy Communion. All are welcome to receive. If it is not in your belief or practice to receive Holy Communion in this way, you're still welcome to attend. You may use the communion time for silent prayer and reflection. All are welcome!

**Good Friday Worship**


*Friday, March 29, at 7 p.m.*

Some argue that you can't have Easter joy without Good Friday grief. This worship service reflects on the death of Christ and what it means for our life and human nature. Pastor Melanie Nord will lead a journey through Jesus' last words in an attitude of humility - embracing any grief that lies without our hearts. All are welcome.


**Easter Sunday Worship**

*Sunday, March 31, at 10:30 a.m.*

Come celebrate the joy of Easter! Christ is risen! Through scripture, song, and message we'll let the hope of eternal life enrich our life and bless our soul! How can we capture an Easter Joy that lasts all year long? We've taken the challenge of giving up something bad for lent. Join Pastor Melanie Nord in worship as we embrace the good in our lives. All are welcome.


  
**MEADOWLARK**

**Employee of  
the Month**



**Amanda Stanzel, Home Health RN**

Sponsored by

**Meritrust**  
CREDIT UNION SM

# EASTER BUFFET

March 31st 11:00-1:30

Meadowlark Event Center \$28<sup>00</sup> +TAX

## HOT

Carved Prime Rib  
Omelet Bar  
Creamy Chicken  
Cajun Pork Tenderloin  
Andouille Sausage  
Herb-Crusted Orange  
Roughy  
Twice-Baked Potato  
Casserole  
Roasted Fingerling  
Potatoes  
Shrimp & Crab Cake  
Wild Rice  
Green Beans  
Vegetable Medley  
Cornbread Dressing

## COLD

Poached Salmon  
Salad Waterfall  
Fruit Display  
Raspberry-Marinated  
Asparagus  
Jell-O Molds  
Deviled Eggs  
Seafood Salad  
Chicken Salad  
Cucumbers & Artichoke  
Potato Salad  
Ambrosia  
Pasta Salad  
Waldorf Salad  
Assorted Bread Display

## DESSERT

Raspberry-Walnut Torte	Dutch Apple Pie
Blueberry Cheesecake	Carrot Cake
Pecan Cheesecake	Mixed Berry Tart
French Silk Pie	Cream Puff Swans
Chocolate-Peanut Butter Pie	Chocolate-Bourbon Pecan Pie

## RESERVE YOUR SPOT AT PRAIRIE STAR

**Reservations are required.**  
To reserve your spot, please visit the host stand or call (785) 323-3820.





## Forming a Free State MHK in KS Territory

The Riley County Genealogical Society presents *Forming a Free State Manhattan in Kansas Territory*, from 2:30 to 3:30 p.m. Sunday, March 17, at the Manhattan Public Library, 629 Poyntz Ave. This free program will be led by Allana Parker and it is open to the public.

During the first few years of Riley County's existence, a number of towns developed as pioneers moved into the vicinity. This included the townsites of Polistra, Canton, New Boston, and ultimately, the city we know as Manhattan today. In this program, learn about the events and individuals around the early founding of Manhattan, Kan. through the letters and diaries of early pioneers, as well as some of the historic landmarks that still stand in our community today.

Originally from Augusta, Kan., Allana Parker received a B.S. in History along with a minor in Leadership Studies from Kansas State University and an M.A. in Museum Studies from the University of Kansas. She served as Curator of Design with the Riley County Historical Museum for 10 years and currently serves as treasurer for the Kansas Museums Association and is a member of the Kansas State Historical Society Foundation board.

Page 6

## Presidential Preference Primary

This year, 2024 has three elections! The Presidential Preference Primary is on March 19, the Primary Election is set for Aug. 6, and the General Election is on Nov. 5. The country has not had a Presidential Preference Primary since 1992.

If a Meadowlark resident is not sure if he or she is registered or if he or she has registered with the correct address, visit <https://www.rileycountyks.gov/134/Review-Your-Voter-Information>. This link also allows individuals to review their ballot style before voting.

If you have questions about any of the elections for 2024, the team at the Riley County Clerk's Office is available to help with questions by calling (785) 537-6300.

Important upcoming voting dates for the 2024

Presidential Preference Primary are listed below:

~Monday, March 18: Advance Voting closes at 12 p.m. at Riley County Clerk's building, 2nd floor (8 a.m. to 5 p.m., Monday through Friday)

~ Thursday, March 19: Presidential Preference Primary at your polling location (7 a.m. to 7 p.m.) & LAST DAY to receive Advance Ballots.

### BABES, from page 1

on the importance of self-awareness. Understanding one's strengths, weaknesses, and preferences is a vital aspect of personal growth. By recognizing her own inclination to lead and organize, she demonstrates a level of self-awareness that many adults aspire to attain.

Where are you at with your own self-awareness? What are your strengths, and how do they contribute to the fabric of our Meadowlark community? Embracing self-awareness fosters a deeper understanding of ourselves and those around us, leading to more meaningful connections.

As we embark on this journey of self-discovery and camaraderie, may we learn from the wisdom of our youngest members and continue to foster a community where every voice is heard, every talent is valued, and every individual plays a meaningful role.



Eilish Duggan decorates sugar cookies on a snow day.



# Art Engagement *from the* Beach Museum of Art

## What is going on?

Take a long moment to look closely at this image. Ask yourself, what is going on in this picture?

Any thoughts you have about this image are worth mentioning.

What do you see that gives you these ideas?

*See page 9 for artist information.*



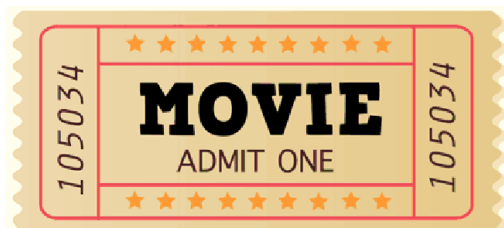
# RESTAURANT **SPECIALS**

<b>Sunday, March 17</b>	Sunday Brunch Brunch Menu available from 9 a.m. to 2 p.m.	<b>\$18</b> Dinner Corned Beef & Cabbage Boiled Red Potatoes Carrots Bailey’s Cheesecake
<b>Monday, March 18</b>	<b>\$11</b> Lunch Taco Salad	<b>\$16</b> Dinner BBQ Ribs Baked Beans Coleslaw
<b>Tuesday, March 19</b>	<b>\$11</b> Lunch Brat Hoagie Sauerkraut German Potato Salad	<b>\$13</b> Dinner Spaghetti & Meatballs Garlic Toast Green Beans
<b>Wednesday, March 20</b>	<b>\$10</b> Lunch Chicken Fajita Quesadilla Corn Salad	<b>\$15</b> Dinner Hawaiian Chicken Grilled Pineapple Coconut Rice Stir Fry Veggies
<b>Thursday, March 21</b>	<b>\$11</b> Lunch Pizza Bar	<b>\$15</b> Dinner Pork Tenderloin <i>with Red Pepper Pesto Sauce</i> Hashbrown Casserole Honey-Glazed Carrots
<b>Friday, March 22</b>	<b>\$11</b> Lunch Soup & Salad Bar	<b>\$17</b> Dinner Parmesan-Crusted Salmon Baked Sweet Potato Asparagus
<b>Saturday, March 23</b>	<b>\$11</b> Lunch Fried Pork Cutlet Sandwich Roasted Red Potatoes	<b>\$19</b> Dinner 6 oz. Ribeye Baked Potato Asparagus



# Weekly Opportunities Calendar *March 17 to March 23*

<p><b>Sunday • March 17</b>     <i>Put your trash at the curb!</i> 10:30 a.m. ~ Worship Service, CR 10:30 a.m. ~ Transportation to FUMC, VE</p> <hr/> <p><b>Monday • March 18</b>     <i>Trash &amp; recycling pick-up</i> 9:30 a.m. ~ Seated Strength, CR <i>or 1960</i> 10:00 a.m. ~ Tuttle Creek Men's Group, MR 10:00 a.m. ~ Tuttle Creek Women's Group, BR 10:30 a.m. ~ Weights 101, CR <i>or 1960</i> 11:00 a.m. ~ Rock Steady Boxing, <i>BF</i> 11:30 a.m. ~ Sit &amp; Be Fit, CR <i>or 1960</i> 1:00 p.m. ~ Parkinson's Exercise Class, CR <i>or 1960</i> 1:30 p.m. ~ God Talk, KSU CL 1:45 p.m. ~ Parkinson's Voice Class, CR 2:00 p.m. ~ Change &amp; Loss Support Group, FHR 6:00 p.m. ~ Lenten Study Group, KSU CL 7:00 p.m. ~ Community Bingo, CR</p> <hr/> <p><b>Tuesday • March 19</b> 9:45 a.m. ~ Target &amp; Great Clips Trip, VE 10:00 a.m. ~ Memory Activities Class, EC 10:00 a.m. ~ Mat Yoga, FHR 10:30 a.m. ~ Steady Yourself, CR <i>or 1960</i> 11:15 a.m. ~ Chair Yoga, CR <i>or 1960</i> 2:00 p.m. ~ Prairie Star Writers Group, PR 2:00 p.m. ~ 10-Point Pitch Group, GR 2:00 p.m. ~ Social Circles, PS 5:30 p.m. ~ 2nd Floor Supper, BR</p> <hr/> <p><b>Wednesday • March 20</b> 9:00 a.m. ~ FUMC Communion, BR 9:30 a.m. ~ Seated Strength, CR <i>or 1960</i> 10:00 a.m. ~ Walmart/Dillons Shopping Trip, VE 10:00 a.m. ~ <i>Ladies-Only</i> Pelvic Floor Info, GC 10:00 a.m. ~ Mem. Care Partners Supp. Grp, FHR 10:00 a.m. ~ Memory Café, KSU CL 10:30 a.m. ~ Weights 101, CR <i>or 1960</i> 11:30 a.m. ~ Sit &amp; Be Fit, CR <i>or 1960</i> 11:30 a.m. ~ West Monarch Luncheon, BR 1:45 p.m. ~ Northview Elementary Jammin' North Stars Choir, EC 3:00 p.m. ~ Rock Steady Boxing, CR 3:00 p.m. ~ Sing-Along, FHR 4:00 p.m. ~ Artist Discussion with the Beach, BR</p>	<p><b>Thursday • March 21</b> 9:00 a.m. ~ Messenger Team, KSU CL 9:00 a.m. ~ Technology Help Drop-In, GR 10:30 a.m. ~ Steady Yourself, CR <i>or 1960</i> 11:15 a.m. ~ Chair Yoga, CR <i>or 1960</i> 11:30 a.m. ~ Caring Conversations for People with Pd Lunch, PS 11:30 a.m. ~ Pd Care Partners Lunch, PS 1:00 p.m. ~ Parkinson's Exercise Class, CR 2:00 p.m. ~ 10-Point Pitch Group, VBL 2:30 p.m. ~ Card Making w/ Michelle Lehmer, FHR 4:00 p.m. ~ Meadowlark Singers Practice, CR 5:00 p.m. ~ Memory Matters Symposium, EC 5:30 p.m. ~ Meadowlark Circle Dinner, MR</p> <hr/> <p><b>Friday • March 22</b> 7:30 a.m. ~ Rock Steady Boxing, <i>BF</i> 9:30 a.m. ~ Seated Strength, <i>1960 only</i> 10:30 a.m. ~ Weights 101, <i>1960 only</i> 11:30 a.m. ~ Sit &amp; Be Fit, <i>1960 only</i> 3:00 p.m. ~ Ice Cream Social, VBL 6:45 p.m. ~ Vinyl Night with Domingo, CY</p> <hr/> <p><b>Saturday • March 23</b> 9:30 a.m. ~ Band Bust Exercise Class, <i>1960 only</i></p> <hr/> <p><b>Room Abbreviations</b></p> <table><tr><td><i>1960</i>, TV Channel 1960</td><td>KSU CL, KSU Classroom</td></tr><tr><td><i>BF</i>, Body First</td><td><i>MM</i>, 120 Scenic Drive</td></tr><tr><td>BR, Bison Room</td><td>MR, Manhattan Room</td></tr><tr><td>CR, Community Room</td><td>PR, Patriot Room</td></tr><tr><td>CY, Courtyard</td><td>PS, Prairie Star Restaurant</td></tr><tr><td>EC, Event Center</td><td><i>MSC</i>, Manhattan Sr. Center</td></tr><tr><td>FHR, Flint Hills Room</td><td>VBL, Verna Belle's Lounge</td></tr><tr><td>GC, Grosh Cinema</td><td>VE, Village Entrance</td></tr><tr><td>GR, Game Room</td><td><i>WUMC</i>, Wamego UM Church</td></tr></table> <hr/> <p><i>Artist information from page 7.</i></p> <p><b>Peter W. Milton</b> (United States, born 1930) <i>Street Scene</i>, 1965 Lift-ground etching on paper KSU, Marianna Kistler Beach Museum of Art, 1966.7</p>	<i>1960</i> , TV Channel 1960	KSU CL, KSU Classroom	<i>BF</i> , Body First	<i>MM</i> , 120 Scenic Drive	BR, Bison Room	MR, Manhattan Room	CR, Community Room	PR, Patriot Room	CY, Courtyard	PS, Prairie Star Restaurant	EC, Event Center	<i>MSC</i> , Manhattan Sr. Center	FHR, Flint Hills Room	VBL, Verna Belle's Lounge	GC, Grosh Cinema	VE, Village Entrance	GR, Game Room	<i>WUMC</i> , Wamego UM Church
<i>1960</i> , TV Channel 1960	KSU CL, KSU Classroom																		
<i>BF</i> , Body First	<i>MM</i> , 120 Scenic Drive																		
BR, Bison Room	MR, Manhattan Room																		
CR, Community Room	PR, Patriot Room																		
CY, Courtyard	PS, Prairie Star Restaurant																		
EC, Event Center	<i>MSC</i> , Manhattan Sr. Center																		
FHR, Flint Hills Room	VBL, Verna Belle's Lounge																		
GC, Grosh Cinema	VE, Village Entrance																		
GR, Game Room	<i>WUMC</i> , Wamego UM Church																		



## GROSH CINEMA SHOWTIMES

MONDAY TO SATURDAY 1:00 P.M. / 4:00 P.M. / 7:00 P.M.  
SUNDAY 2:00 P.M. / 6:00 P.M.

### SUNDAY: March 17

***INDIANA JONES & THE DIAL OF DESTINY*** (2023) PG-13, 2 hr. 38 min. *Sci-Fi, Action, Adventure*

Cast: Harrison Ford, Phoebe Waller-Bridge, & Mads Mikkelsen

Archaeologist Indiana Jones races against time to retrieve a legendary artifact that can change the course of history.

### MONDAY: March 18

***SPACEMAN*** (2024) R *for language*, 1 hr. 48 min. *Mind-Bending, Psychological, Cerebral*

Cast: Adam Sandler, Carey Mulligan, & Paul Dano

Six months into a solo mission, a lonely astronaut confronts the cracks in his marriage with help from a mysterious creature he discovers on his ship.

### TUESDAY: March 19

PAGE TURNER REQUEST

***TRUE GRIT*** (1969) G, 2 hr. 8 min. *Adventure, Drama, Western*

Cast: John Wayne, Kim Darby, & Glen Campbell

A drunken, hard-nosed U.S. Marshal and a Texas Ranger help a stubborn teenager track down her father's murderer in Indian Territory.

### WEDNESDAY: March 20

***MADE IN ITALY*** (2020) R *for language*, 1 hr. 33 min. *Intimate, Emotional, Drama*

Cast: Liam Neeson, Micheal Richardson, & Valeria Bilello

A widower artist and his estranged son try to mend their broken relationship as they work together to restore a dilapidated house in Italy.

### THURSDAY: March 21

***THE GREATEST DEBATERS*** (2007) PG-13, 2 hr. 7 min. *Inspiring, Drama*

Cast: Denzel Washington, Nate Parker, & Jurnee Smollett

In 1935, a teacher at an all-black college pushes his debate team to a level of excellence that nets them a chance to face reigning champion Harvard.

### FRIDAY: March 22

***FUN WITH DICK & JANE*** (2005) PG-13, 1 hr. 30 min. *Goofy, Comedy*

Cast: Jim Carrey, Tea Leoni, & Alec Baldwin

After losing their high-paying corporate jobs, a husband and wife turn to bank robbery to maintain their standard of living.

### SATURDAY: March 23

***HOLIDAY IN THE WILD*** (2019) TV-PG, 1 hr. 26 min. *Romantic, Drama, Family*

Cast: Rob Lowe, Kristin Davis, & Fezile Mpela

When her husband abruptly ends their marriage, empty nester Kate embarks on a solo second honeymoon in Africa, finding purpose—and potential romance.