

# Back to the Beginning



Meadowlark, a place people have called home since 1980, has a rich history. Margaret Wheat, a registered nurse, joined the Meadowlark board in 1976 and was an integral part of Meadowlark Hills for nearly half her life. In fact, it was Margaret who dreamed up what would become the official name of the community, following a multitude of suggestions that included Kanza Heights, Prairie View, and Hilltop House. Nothing quite fit ... until inspiration struck her “like a beam of light” when she remembered the board’s first visit to the property.

“To look back at our starting point, when all the meadowlarks flew up out of the grasses—I could never have dreamed how it would all work out,” she said. “The community deserves appreciation and gratitude for the support and development of this organization.”

Margaret served a second board term from 1998 to 2005 and became a Meadowlark Hills resident herself in 2000, first moving with her husband, John, into a new Meadowlark Road cottage, and later into an apartment after his passing.

In 2012, Margaret was honored with the Legacy Award for her contributions to Meadowlark. In 2015, Meadowlark Foundation established the Margaret Wheat Spirit of Meadowlark Hills Award, which honors a resident who embodies the spirit and person-centered culture of Meadowlark Hills. Margaret passed away in October 2019.

In 2014, Margaret reflected on Meadowlark’s first 30 years. What follows is an excerpt from her essay titled, “Meadowlarks at Home on the Hills.” Please contact Sarah Duggan at (785) 323-3878 for access to the full copy of her writing.

The old adage, “Necessity is the mother of invention,” can be interpreted as a recognized need can become the motivation to fulfill the need.

In Manhattan in the 1960s and 70s, its maturing population recognized the need to create a retirement community in which the older citizens could live, where problems of aging could be addressed, and assistance given by geriatric and health professionals.

See BEGINNING, page 5

## EVENTS & OPPORTUNITIES

### **NEW Bridge Group opportunity**

A new opportunity to participate in an on-campus bridge group is coming! Tune into next week's Messenger to learn more.

### **IL Records Update**

Our Administrator in Training, Makayla Brooks, is continuing her work to help update independent living resident contact information for our records. Residents should anticipate a call from her to arrange a meeting.

Please prepare for these meetings by having updated contact details, copies of Powers of Attorney, Living Wills, DNRs, and insurance cards.

Also, be prepared for Makayla to take an updated photo during the meeting. There are information sheets available at the Hospitality Desk that can be completed in advance of your meeting time.

If you have any questions, call Taylor Wheelock, Assistant Administrator, at (785) 323-3862, or email her at [twheelock@meadowlark.org](mailto:twheelock@meadowlark.org).

### **K-State Playback Theatre**

**Thursday, Jan. 11, at 7 p.m.**

Join us on Thursday, Jan. 11, at 7 p.m. in the Meadowlark Community Room for a one-time special performance by the K-State Playback Theatre class.

Playback Theatre is an original form of improvisational theater in which audience or group members tell stories from their lives and watch them enacted on the spot by trained Playback performers. The performance draws people closer as they see their common humanity. Founded in New York in the mid-70s by Jonathan Fox with Jo Salas and other members of the original Playback Theatre company, it has since grown into an international theater form, reaching hundreds of settings and locations, and is now practiced in more than 60 countries on five continents.

Playback Theatre is used in a wide variety of settings. In addition to providing highly enjoyable theater, this approach promotes dialogue between different voices, since during a Playback Theatre event many people have the opportunity to speak and see their stories embodied on the stage. The Playback Theatre process also promotes the

definition of identity because the act of telling and seeing is often an integrating experience. We discover who we are by telling our stories. As others bear witness and tell theirs in response, a deep and empathy-building conversation is created through our collective stories brought to the stage.

Playback Theatre at K-State has enjoyed a long-standing presence on campus and in the community involving predominately graduate students in the Drama Therapy program.

### **Celebration of Life**

**Friday, Jan. 12, at 2 p.m.**

All are invited to attend the Celebration of Life for Betty Braaten at 2 p.m. Friday, Jan. 12, in the Community Room/Chapel.

### **Worship Service**

**Sunday, Jan. 14, at 10:30 a.m.**

Join Pastor Melanie Nord for worship at 10:30 a.m. Sunday, Jan. 14, in the Community Room/Chapel. This week's sermon is titled, "Our Covenant." All are welcome to attend.

### **Hot Topics in January**

**Monday, Jan. 15, at 6 p.m.**

Join Rev. Melanie Nord in the KSU Classroom at 6 p.m. each Monday as we thoughtfully discuss commonly "hot" or controversial religious topics. We may not solve any problems but, together, we'll look at what scripture, reason, tradition, and experience tells us about these difficult subjects.

Topics include: separation of church and state, science and religion, world religions, and human sexuality. Those in attendance will be expected to share calmly and hold respect for our fellow attendees in their sharing.

Hot Topics will meet on Monday, Feb. 5, to make up for the missed session on Monday, Jan. 8.

### **Prairie Star Writers Group**

**Tuesday, Jan. 16, at 2 p.m.**

Interested in joining the writing group at Meadowlark? Prairie Star Writers invites you to attend the next meeting at 2 p.m. Tuesday, Jan. 16, in the Patriot Room.

The Jan. 16 session is titled, "Who is the Person in that Picture?" Do you have a photograph of one long past who is still alive in your heart? Let's

## EVENTS & OPPORTUNITIES

write the story behind the photograph. Writers is led by Cathy Hedge. The group meets on the first and third Tuesdays.

### **FUMC Communion**

**Wednesday, Jan. 17, and 9 a.m.**

Join Pastor Donna and Pastor Courtney from First United Methodist Church at 9 a.m. Wednesday, Jan. 17, in the Bison Room to receive communion. The opportunity is open to anyone wanting to invite Christ into his or her heart.

### **Page Turners Book Club**

**Wednesday, Jan. 17, at 11:30 a.m.**

In 2024, Page Turners Book Club will continue to read books that have become movies. The group has picked a number of enticing reads, including *My Sister's Keeper* by Jodi Picoult, a true WWII story, *Unbroken* by Laura Hillenbrand, and a classic western, *True Grit* by Charles Portis.

The group will start 2024 reading *Fried Green Tomatoes* by Fannie Flagg. The first discussion will take place on Wednesday, Jan. 17, at 11:30 a.m. in the Patriot Room. Please contact Katie Sigman at [ksigman@meadowlark.org](mailto:ksigman@meadowlark.org) or (785) 323-3899 if you have any questions or need a copy of the book.

### **Artist Discussion with the Beach**

**Wednesday, Jan. 17, at 4 p.m.**

Join Kim Richards from the Beach Museum of Art for "Margaret Whitemore: A Kansas Artist," at 4 p.m. Wednesday, Jan. 17, in the Bison Room. Whitemore worked in Kansas for more than three decades. Her block prints capture many interesting features across the state, allowing viewers to revisit the history of Kansas.

### **Technology Help Drop In**

**Thursday, Jan. 18, at 9 a.m.**

Are you new to technology or need help with existing computer questions? Take advantage of a one-on-one help with tablets, laptops, and phones. This opportunity is offered by Wandean Rivers with Manhattan Public Library every third Thursday from 9 to 11 a.m. in the Game Room.

### **Caring Conversations Lunch Group**

**Thursday, Jan. 18, at 11:30 a.m.**

Due to popular demand, Meadowlark Parkinson's Program added the third Thursday at 11:30 a.m. as a

chance to meet for lunch and fellowship.

People with Parkinson's (PwP) may meet in the Prairie Star Restaurant to dine and share life with each other. This opportunity is open to all with a diagnosis at any stage of your journey. Each PwP is responsible for payment of his/her own food and drink. For convenience, this lunch is right before the PD Exercise Class. Michelle will join monthly as the schedule allows.

### **Pd Care Partners Lunch**

**Thursday, Jan. 18, at 11:30 a.m.**

This is an informal opportunity for Pd Care Partners to join one another for lunch at Prairie Star Restaurant while your loved one with Pd is participating in Caring Conversations Lunch Group. The cost of food and drinks are the responsibility of each care partner. Meet other care partners on the third Thursday of each month starting Jan. 18 at 11:30 to 1 p.m.

### **Card Making with Michelle Lehmer**

**Thursday, Jan. 18, at 2:30 p.m.**

The next Card Making with Michelle Lehmer class will occur on Thursday, Jan. 18, at 2:30 p.m. in the Flint Hills Room.

### **Magician Jack Reid**

**Friday, Jan. 19, at 7p.m.**

Meadowlark is excited to welcome back the Manhattan Magician, Jack Reid, at 7 p.m. Friday, Jan. 19, in the Event Center! Mind reading, crafty card tricks, and potential friendly pickpocketing are all fun experiences you may have with Jack Reid. The 26-year-old local began doing magic professionally about seven years ago, deciding to pursue his passion for magic rather than take a college route.

### **Shopping at Hobby Lobby & Dollar Tree**

**Saturday, Jan. 20, at 10:30 a.m.**

The next scheduled trip is Saturday, Jan. 20, with transportation going to Hobby Lobby and Dollar Tree East. The bus will depart from the Village Entrance at 10:30 a.m., and the return time is set for 11:45 a.m.

Next month's trip will travel to Target and

See EVENTS, page 4

## EVENTS, from page 3

Dollar Tree West on Saturday, Feb. 17. Please sign up in the Blue Book to participate.

### **Why?: A Film about Early-Stage Dementia**

**Tuesday, Jan. 23, at 6 p.m.**

*Why?* is a film about early-stage dementia by the KU Alzheimer's Disease Center. The film addresses some of the barriers in recognizing and addressing early cognitive changes as well as supporting a hopeful, empowered approach to moving forward.

People featured in the film include individuals diagnosed with dementia, family members, physicians, nurses, and researchers. A viewing will be offered at 6 p.m. Tuesday, Jan. 23, in the Community Room. Reservations are not required.

### **Kitchenware Drive**

**Tuesday, Jan. 30, at 10:30 a.m.**

Ready, set, donate! After successful holiday sales, the kitchen shelves and countertops at Meadowlark Market are looking as bare as grocery store shelves before a winter storm! In addition, a local outreach program called Kitchen ReStore provides starter kitchen kits to families and individuals in need.

Because proceeds from Meadowlark Market support our Good Samaritan Fund, the Meadowlark Ambassadors invite residents and Passport members to support the Fund as well as Kitchen Restore by donating gently used or new items used for food preparation, serving, and food storage. They are hosting a kitchenware drive on Tuesday, Jan. 30; donations will be accepted from 10:30 a.m. to 1 p.m. in the Flint Hills Room. Items such as measuring spoons and cups, mixing bowls, baking dishes, cookie sheets, dinner plates and bowls, utensils, glasses, and mugs, are all items that will be accepted.

Both the Market and Kitchen Restore also will accept gently used small appliances, such as microwaves, toasters, and blenders. If you need assistance getting such an item to the Flint Hills Room, contact Becky Fitzgerald, Development Director, at (785) 323-3843. For a complete list of accepted items, please contact Jana at (785) 323-3890, or by email at [jarmfield@meadowlark.org](mailto:jarmfield@meadowlark.org).

## **Robert Cranmer**

***Full obituary printed at the request of the family.***

Robert "Bob" Cranmer (age 88), Manhattan, Kan., passed away Dec. 20, 2023. He was born Dec. 1, 1935, to Warren and Estella (Turley) Cranmer in Modoc, Kan.



The third of five children, he attended Scott Community High School, Garden City Community College, and spent four years in the U.S. Air Force.

He married Carla Epler Dec. 20, 1957. They enjoyed 66 years of marriage. They resided in Scott City, Kan., Englewood, Kan., Ashland, Kan., Ness City, Kan., and Manhattan, Kan. Most of these moves were a result of Robert's career in the U.S. Postal Service. His last position was Postmaster of the Ness City, Kan., office, where he retired in 1990. He spent his final years at Meadowlark Hills Retirement Community.

Robert was active in many community organizations and activities: Rotary, Scouting (Council Commissioner, Silver Beaver Award), NARFE (State President), NAPUS, American Legion, Municipal Judge, KS Quality Woodworkers Association. He had many hobbies over the years: bowling (local and traveling leagues, national tournaments), woodworking (blanket chests, rocking horses, table and chairs, caskets), master hunter safety instructor, gun collecting and reloading.

Family was very important to Robert. He really looked forward to attending family gatherings. A dedicated and loving husband and father, he supported his children's school activities, scouting adventures, and athletic events.

He is survived by his wife, Carla Cranmer; son Jon (Sanna) Cranmer, St George, Kan.; son, Brent (Annette) Cranmer, Fredonia, Kan.; sister Donna (Joe) Woodruff, Tulsa, Okla.; four grandchildren, and eight great-grandchildren.

Robert was predeceased by his parents and siblings: Warren Cranmer, Cleo Carpenter, Faye Stewart.

A memorial service will be held at a later date.

Services entrusted to Countryside Funeral Home, 420 S. 20th, PO Box 247, Fredonia, Kan.



## BEGINNING, from page 1

Downsizing could be accomplished, while a home could be established among friends, and dignified living could be achieved at a slower pace, with activities that filled the social needs of the later years of life. Several unsuccessful attempts had been made to achieve this goal.

A motivator would be a primary requirement to succeed in attaining this goal, and such a person materialized this motivation is Marshall Schirer, the pastor of First Baptist Church in Manhattan. After only a few years in Manhattan, he saw several couples who had been actively involved in the life of their church, and who, because of the lack of retirement facilities in Manhattan, had moved to such places as Kansas City and Wichita. By 1974, he had gone before the Ministerial Alliance of the city, and challenged them to work together in planning, supporting, and leading the city in a cooperative effort to raise funds to create a retirement community for its citizens.

Of course, a vision of such utter grandiose hope and desire was not for the faint-hearted. The evidence of numerous nursing homes and retirement centers across the nation which were in financial difficulties was discouraging, and the idea as a group activity was turned down by the Ministerial Alliance. Yet the need became rooted. To attempt to meet his need required the following: go on record as supporting the efforts of those seeking to provide retirement facilities; church membership roles will be made available and members can be approached to consider financial commitment; the church will appoint an official representative who is a member of the church.

The church passed this motion, and Vernon Larson and Evans Roth were elected by the church to its representatives on the Retirement Committee Board.

Similar actions were being taken at five other churches. The official Manhattan Retirement Foundation Board membership in 1975 was composed of representatives from Blue Valley Methodist, Dave Peterson (minister) and Kris Arheart; First Baptist, Marshall Schirer (minister), Vernon Larson, and Evans Roth; First Christian, Ben Duerfeldt (minister), and Howard and Geraldine McManus; First Lutheran, Milton Olson (minister), Lloyd Carlson, and Hal Deters; First Presbyterian, John Graham (minister), Jim

Morrison, and J. Willett Taylor; Trinity Presbyterian, Alvin Zimmerman (minister) and John Buller.

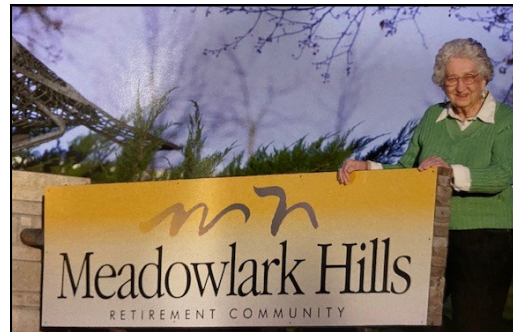
At large members included Mary Border, Roger Reitz, Alvin Hostetler, Gene Ernst, Charles Bissey, Christine Wiggins, and Betty Mader.

The Board, once organized, was faced with a daunting task—from ground zero to find the funds and land on which to build a retirement community. Retired citizens were eager to see planning underway and were ready to commit funds toward reserving a place for themselves in the community to be built—it was an exhibition of faith and trust in a future hoped for, yet unseen. To begin the process, on March 3, 1975, The Articles of Incorporation of the Manhattan Retirement Foundation, Inc. were applied for and granted by the Secretary of State of Kansas.

...

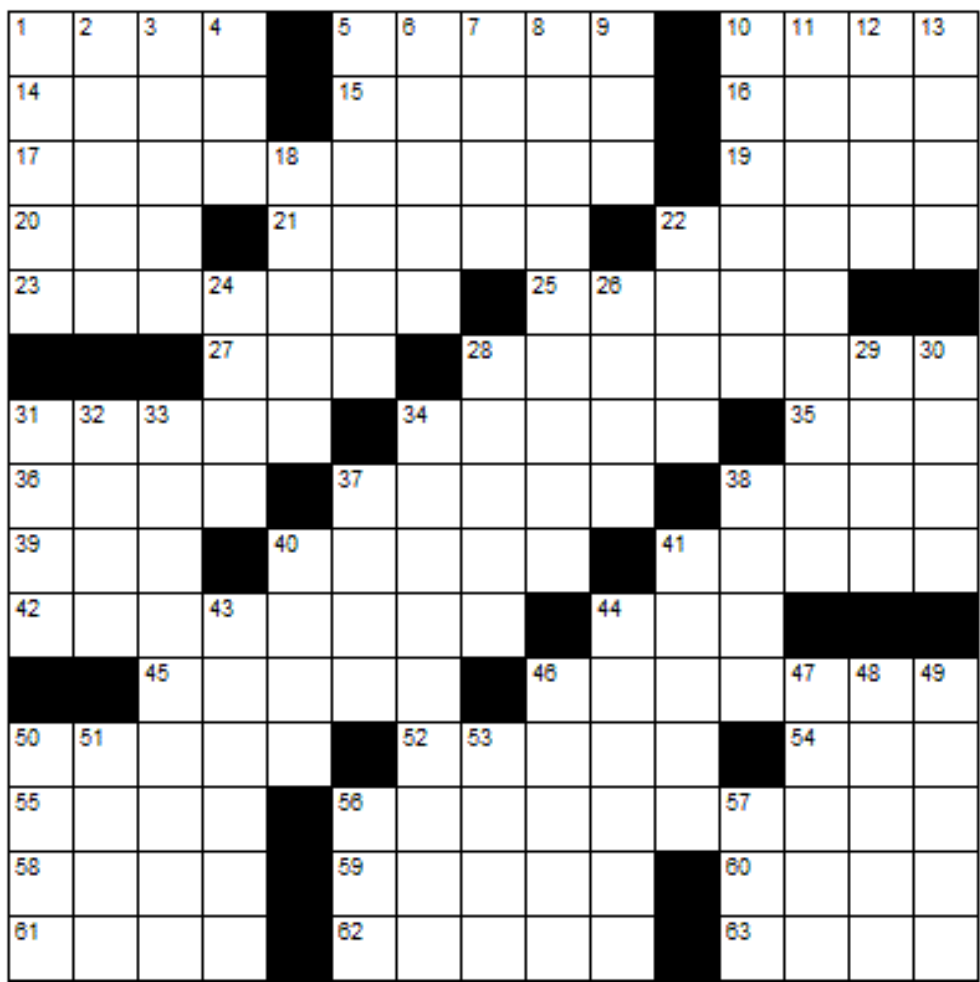
In November 1976, plans were laid for applying for zoning and annexation to the city, plans that would meet the newly revised zoning regulations. The treasurer reported \$12,526.72 on hand, money that had been given to the organization by churches and individuals. Tom Wentz was asked to begin negotiation for an employee who would serve as coordinator of the building activities and future sales of living units. The Service Committee gave a written report on their trips to other retirement and nursing communities, which included ideas on housekeeping, maintenance, laundry, healthcare services, food, apartment units, and recreational space.

The Service Committee also reported their discussion of a name for the future retirement community, and presented the name Meadowlark Hills as their suggestion. This met the approval of the entire Board, and thus the meadowlarks of the grasses would eventually be joined in song by Manhattan retirees.



*File photo. The late Margaret Wheat pictured with a sign that was located at the Kimball Avenue entrance.*

# Work That Brain!



## ACROSS

1. Curved molding
5. Navigational aid
10. Repose
14. Bog
15. Female demon
16. X X X X
17. Rating
19. Travel on foot
20. Obtain
21. Perspiration
22. Spheres
23. One more
25. Blatant
27. Scarlet
28. Constructors
31. Pertaining to the sun
34. Artist's stand
35. Twosome
36. Alright
37. Doesn't succeed
38. Countertenor
39. Arrange (abbrev.)
40. Twice twenty
41. Secret meeting
42. Masked mammals
44. Dog command
45. American symbol
46. Cut
50. 2nd planet
52. Primitive weapon
54. Sash
55. "Aeneid" figure
56. State of extreme hunger
58. Chills and fever
59. Not dead
60. Small island
61. Euphemism for death
62. Funeral piles
63. Asterisk

## DOWN

- |                              |                         |                        |
|------------------------------|-------------------------|------------------------|
| 1. Alpha's opposite          | 18. Doorkeeper          | 40. Obscures           |
| 2. Assumed as fact           | 22. Chime               | 41. Coronet            |
| 3. Muse of poetry            | 24. Used to carry meals | 43. Gives rise to      |
| 4. Snake-like fish           | 26. Contends            | 44. Thralls            |
| 5. Scratched                 | 28. Entices             | 46. Wait on            |
| 6. Bigot                     | 29. Grooves             | 47. Raise              |
| 7. Dogfish                   | 30. Lampblack           | 48. Deadly virus       |
| 8. Exuberantly               | 31. Fly high            | 49. Eatery             |
| 9. Browning of skin          | 32. Gumbo ingredient    | 50. Calf's meat        |
| 10. Give recompense          | 33. Thievishness        | 51. Therefore          |
| 11. In a noble-minded manner | 34. With deep sincerity | 53. Twosome            |
| 12. Peddle                   | 37. Hoodwink            | 56. Drain              |
| 13. Sounds of disapproval    | 38. Cultural doings     | 57. Poetic contraction |

## Art Engagement *from the* Beach Museum of Art

This print is an example of balanced symmetry. The artist has created a horizontal line just below the center of the composition, and the objects on either side are visually balanced. However, the bottom half does not perfectly mirror the top half. As you spend time looking closely at this print, where does it lack perfect symmetry? What objects are not shown in both halves? Compare the objects that are reflected on each side of the dividing line using value, line, texture, and form. How are they treated differently?



John Depol, *Mill on the Aspetuck*, 1952, Wood engraving on paper, KSU, Marianna Kistler Beach Museum of Art, gift of the family of E. Hubert Deines

# RESTAURANT SPECIALS

<b>Sunday, Jan. 14</b>	<b>Sunday Brunch</b> Brunch Menu available from 9 a.m. to 2 p.m.	<b>\$15 Dinner</b> Beef Tips Mashed Potatoes & Gravy Broccoli
<b>Monday, Jan. 15</b>	<b>\$11 Lunch</b> Cheeseburger Sliders French Fries	<b>\$17 Dinner</b> Coconut Shrimp Coconut Rice Grilled Pineapple
<b>Tuesday, Jan. 16</b>	<b>\$10 Lunch</b> Bacon-Cheddar Egg Salad <i>served on a Croissant</i> Breakfast Potatoes	<b>\$17 Dinner</b> BBQ Meatloaf Cheesy Potatoes Baked Beans
<b>Wednesday, Jan. 17</b>	<b>\$12 Lunch</b> BBQ Riblette on a Hoagie <i>with Sautéed Onions &amp; Pickles</i> Pub Chips	<b>\$14 Dinner</b> Fried Pork Cutlet Mashed Potatoes & Gravy Green Beans
<b>Thursday, Jan. 18</b>	<b>\$11 Lunch</b> Italian Beef Sandwich Pasta Salad	<b>\$16 Dinner</b> Creamy Chicken Gnocchi Garlic Bread Roasted Zucchini
<b>Friday, Jan. 19</b>	<b>\$11 Lunch</b> Pizza Bar	<b>\$17 Dinner</b> Short Ribs Loaded Mashed Potatoes Green Beans
<b>Saturday, Jan. 20</b>	<b>\$11 Lunch</b> BBQ Chicken Sandwich Broccoli Salad	<b>\$15 Dinner</b> Fried Chicken Mashed Potatoes & Gravy Corn



# Weekly Opportunities Calendar *Jan. 14 to Jan. 20*

**Sunday • Jan. 14** *Put your trash at the curb!*  
 10:30 a.m. ~ Worship Service, CR  
 10:30 a.m. ~ Transportation to FUMC, VE

**Monday • Jan. 15** *Trash & recycling pick-up*  
 9:30 a.m. ~ Seated Strength, CR *or 1960*  
 10:00 a.m. ~ Tuttle Creek Men's Group, MR  
 10:00 a.m. ~ Tuttle Creek Ladies Group, BR  
 10:30 a.m. ~ Weights 101, CR *or 1960*  
 11:00 a.m. ~ Rock Steady Boxing, BF  
 11:30 a.m. ~ Sit & Be Fit, CR *or 1960*  
 1:00 p.m. ~ Parkinson's Exercise Class, CR *or 1960*  
 1:30 p.m. ~ God Talk, KSU CL  
 2:00 p.m. ~ Change & Loss Support Group, FHR  
 5:30 p.m. ~ Tuttle Creek Dinner, BR  
 6:00 p.m. ~ Hot Topics, KSU CL  
 7:00 p.m. ~ Community Bingo, CR

**Tuesday • Jan. 16**  
 9:45 a.m. ~ Target & Great Clips Trip, VE  
 10:00 a.m. ~ ARTful Memories, KSU CL  
 10:30 a.m. ~ Steady Yourself, CR *or 1960*  
 11:15 a.m. ~ Chair Yoga, CR *or 1960*  
 12:05 p.m. ~ Mat Yoga, CR  
 2:00 p.m. ~ Prairie Star Writers Group, PR  
 2:00 p.m. ~ 10-Point Pitch, GR  
 5:30 p.m. ~ 2nd Floor Supper, BR

**Wednesday • Jan. 17**  
 9:00 a.m. ~ FUMC Communion, BR  
 9:30 a.m. ~ Seated Strength, CR *or 1960*  
 10:00 a.m. ~ Walmart/Dillons Shopping Trip, VE  
 10:00 a.m. ~ Mem. Care Partners Supp. Grp, FHR  
 10:00 a.m. ~ Memory Café, KSU CL  
 10:30 a.m. ~ Weights 101, CR *or 1960*  
 11:30 a.m. ~ Sit & Be Fit, CR *or 1960*  
 11:30 a.m. ~ Page Turners Book Club, PR  
 11:30 a.m. ~ Monarch North Lunch, MR or BR  
 3:00 p.m. ~ Sing-Along, FHR  
 3:00 p.m. ~ Rock Steady Boxing, CR  
 4:00 p.m. ~ Artist Discussion with the Beach, BR

**Thursday • Jan. 18**  
 9:00 a.m. ~ Messenger Team, KSU CL  
 9:00 a.m. ~ Technology Help Drop-In, GR  
 10:30 a.m. ~ Steady Yourself, CR *or 1960*  
 11:15 a.m. ~ Chair Yoga, CR *or 1960*  
 11:30 a.m. ~ Pd Caring Convo. Lunch, PS  
 11:30 a.m. ~ Pd Care Partner Lunch, PS

**Thursday • Jan. 18**  
 12:05 p.m. ~ Mat Yoga, KSU CL  
 1:00 p.m. ~ Parkinson's Exercise Class, CR  
 2:30 p.m. ~ Card Making with Michelle, FHR  
 4:00 p.m. ~ Meadowlark Singers Practice, BR  
 5:30 p.m. ~ Meadowlark Circle Dinner, MR

**Friday • Jan. 19**  
 7:30 a.m. ~ Rock Steady Boxing, BF  
 9:30 a.m. ~ Seated Strength, CR *or 1960*  
 10:30 a.m. ~ Weights 101, CR *or 1960*  
 11:30 a.m. ~ Sit & Be Fit, CR *or 1960*  
 3:00 p.m. ~ Catholic Rosary, CR  
 7:00 p.m. ~ Magician Jack Reid, EC

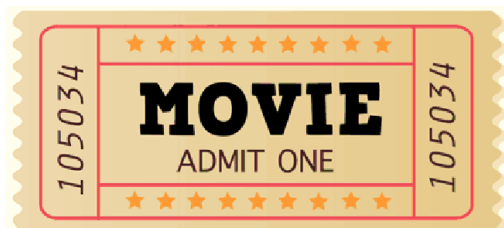
**Saturday • Jan. 20**  
 9:30 a.m. ~ Band Bust Exercise Class, *1960 only*  
 10:30 a.m. ~ Saturday Shopping Trip, VE

## Room Abbreviations

<i>1960</i> , TV Channel 1960	KSU CL, KSU Classroom
BF, Body First	MM, 120 Scenic Drive
BR, Bison Room	MR, Manhattan Room
CR, Community Room	PR, Patriot Room
CY, Courtyard	PS, Prairie Star Restaurant
EC, Event Center	MSC, Manhattan Sr. Center
FHR, Flint Hills Room	VBL, Verna Belle's Lounge
GC, Grosh Cinema	VE, Village Entrance
GR, Game Room	

## Solution from 1/4.

C	A	D	E		S	P	R	I	G		B	A	B	Y
A	M	E	N		A	R	E	N	A		U	R	E	A
S	U	B	D	I	V	I	D	E	D		S	M	E	W
E	S	T		M	I	N	O	R		S	H	A	R	P
D	E	S	C	A	N	T		T	W	E	E	D		
			E	G	G		S	N	A	R	L	I	E	R
E	L	I	D	E		T	H	E	R	E		L	V	I
V	I	S	E		D	A	I	S	Y		S	L	E	D
E	S	S		L	O	I	N	S		S	H	O	R	E
S	T	U	P	I	D	L	Y		B	I	O			
		A	R	R	O	W		C	E	N	T	R	A	L
M	A	N	I	A		I	L	I	A	C		H	U	E
A	R	C	S		S	N	O	R	K	E	L	I	N	G
L	I	E	S		E	D	U	C	E		A	N	T	I
E	A	S	Y		E	S	T	E	R		P	O	S	T



## GROSH CINEMA SHOWTIMES

MONDAY TO SATURDAY 1:00 P.M. / 4:00 P.M. / 7:00 P.M.  
SUNDAY 2:00 P.M. / 6:00 P.M.

RESIDENT REQUEST

### SUNDAY: Jan. 14

***GET A CLUE*** (2002) TV-G, 1 hr. 23 min. *Mystery*

Cast: Lindsey Lohan, Bug Hall, & Ian Gomez

Thirteen-year-old fashionista Lexy Gold prides herself on getting the inside scoop for her school's gossip column. When her English teacher, Mr. Walker, goes missing, Lexy takes the lead on what could be the story of the century, teaming up with her friends to find out what really happened to Mr. Walker.

### MONDAY: Jan. 15

***THE BANK OF DAVE*** (2023) PG-13, 1 hr. 47 min. *Inspiring, Heartfelt, Feel-Good*

Cast: Joel Fry, Phoebe Dynevor, & Rory Kinnear

After big financial institutions fail the people in his small town, a self-made car dealer decides to fight the odds and set up his own local bank.

### TUESDAY: Jan. 16

***MARSHALL*** (2017) PG-13, 1 hr. 58 min. *Drama, Courtroom*

Cast: Chadwick Boseman, Josh Gad, & Kate Hudson

This biopic of Thurgood Marshall, the first Black U.S. Supreme Court justice, centers on his pivotal work in a sensational case as an NAACP lawyer.

### WEDNESDAY: Jan. 17

***ALICE DOESN'T LIVE HERE ANYMORE*** (1974) PG, 2 hr. 16 min. *Intimate, Bittersweet, Emotional*

Cast: Ellen Burstyn, Kris Kristofferson, & Alfred Lutter

A widowed singer and single mother starts over as a diner waitress in Arizona, befriend her coworkers and romancing a ruggedly handsome rancher.

### THURSDAY: Jan. 18

***REBEL MOON: PART ONE*** (2023) PG-13, 2 hr. 15 min. *Exciting, Sci-Fi, Action & Adventure*

Cast: Sofia Boutella, Djimon Hounsou, & Ed Skrein

When the ruthless forces of the Motherworld threaten a quiet farming village on a distant moon, a mysterious outsider becomes its best hope for survival.

### FRIDAY: Jan. 19

***THE BLUES BROTHERS*** (1980) R *for language*, 2 hr. 12 min. *Deadpan, Absurd, Goofy*

Cast: John Belushi, Dan Aykroyd, & James Brown

Jake and Elwood set out on a mission from God to save the Chicago orphanage where they were raised by reuniting their R7B band for a charity gig.

### SATURDAY: Jan. 20

***THE LITTLE PRINCE*** (1974) G, 1 hr. 28 min. *Family, Classic*

Cast: Steven Warner, Joss Ackland, & Clive Revill

A pilot who's forced down in the Sahara Desert listens to a boy's magical stories about distant planets and strange people and animals.