



[above] A 7.5-foot pre-lit tree was a focal point at Meadowlark Market's November sale. Christmas and winter decor also is sold in July and December.



[above] Residents Jo Fey, Vicky Auman, and Karen Matthews, three of 28 Market volunteers, devote many hours to sorting, arranging, repairing, and pricing inventory prior to monthly sales as well as assist customers on sale days.

High-quality donations, hard-working volunteers make cents at Meadowlark Market

by Becky Fitzgerald, Development Director

"This is Our Happy Place." A custom-made, wooden sign crafted by Meadowlark resident Steve Hall hangs at Meadowlark Market, and the words seem to aptly describe the feelings of those associated with the monthly fundraiser. Happy donors, happy customers, and happy volunteers have helped to create another successful year in terms of awareness of and funds raised for Meadowlark Foundation's Good Samaritan Fund.

As 2023 comes to a close, revenue generated from 11 two-day sales (February through December), as well as sales by appointment all 12 months, totals nearly \$89,400. Another expected sale next week should push this year's total past \$90,000! A

Christmas in July sale helped to bring in the biggest monthly total at about \$10,210, with revenue in February, September, and October all surpassing \$9000. The monthly sales are scheduled the last Friday and Saturday of the month unless a national holiday or another Meadowlark fundraising event provides a conflict. The Market is located at 120 N. Scenic Drive.

The high quality of donated furniture, home goods, collectibles, and jewelry offered at less-than-retail prices surely contributes to the Market's popularity and higher sales totals. Most of the furniture offered to customers is actually made of wood, not particle board, and previously was owned by persons who

See MARKET, page 4

EVENTS & OPPORTUNITIES

Holiday Schedule Changes

Please see below for schedule changes because of the Christmas holiday.

~ The Hospitality Desk will close at 1:30 p.m. Sunday, Dec. 24. The desk will remain closed through Saturday, Dec. 25, and will open at 8 a.m. Tuesday, Dec. 26.

~ Prairie Star Restaurant will offer a mid-day meal between 11 a.m. and 2 p.m. Monday, Dec. 25. Reservations are required.

~ Prairie Star Restaurant will offer a boxed meal option for dinner on Christmas Day for \$10 each. Please sign up in the Blue Book at the Hospitality Desk. Meals will be delivered at no additional charge between 2 and 3 p.m. Monday, Dec. 25.

~ *Angela's Christmas* will play in Grosh Cinema at 2 p.m. and 3 p.m. Monday, Dec. 25. Regular movie showing times will resume Tuesday, Dec. 26.

~ Trash pick-up will be on Tuesday the next two weeks. Trash will be picked up by Howie's Trash Service on Tuesday, Dec. 26, and Tuesday, Jan. 2. Monday trash service will resume Monday, Jan. 8.

~ Seated Strength, Weights 101, Sit & Be Fit, and Pd Exercise are canceled for Monday, Dec. 25. Please see page 7 for the listing of televised exercise classes, which can be found on channel 1960.

~ Steady Yourself, Chair Yoga, and Mat Yoga classes are canceled for Tuesday, Dec. 26.

~ Chair Yoga and Mat Yoga classes are canceled for Thursday, Dec. 28.

~ Community Bingo is canceled for Monday, Dec. 25, and Monday, Jan. 1.

~ Diabetic Wellness Group will not meet Wednesday, Dec. 27.

~ Meadowlark Singers will take a break from practice until Thursday, Jan. 18.

Christmas Eve Worship Service

Sunday, Dec. 24, at 10:30 a.m.

Join Pastor Melanie Nord for the normal Sunday 10:30 a.m. worship time Christmas Eve in the Community Room/Chapel and celebrate the birth of Christ by singing beloved Christmas hymns, sharing scripture, praying together, and

learning about God's message for us. We'll continue our current sermon series examining the birth stories in the Gospels. On Christmas Eve, we'll take a close look at the Gospel of John.

Christmas Day Worship

Monday, Dec. 25, at 10:30 a.m.

What better way to celebrate Christmas than to sing hymns and share joy in Christian Community? Pastor Melanie Nord and Pianist Ethan Xin will lead this special worship opportunity at 10:30 a.m. Monday, Dec. 25, in the Community Room/Chapel. All are welcome.

Christmas Day Lunch

Monday, Dec. 25, between 11 a.m. & 1:30 p.m.

You're invited to reserve seats for lunch on Christmas Day in Prairie Star Restaurant. Seatings are available between 11 a.m. and 1:30 p.m. Reservations can be made by contacting the restaurant at (785) 323-3820 or visiting the host stand. **Reservations will close today, Dec. 21.**

The menu will include an entree choice of prime rib (\$25), maple-glazed salmon (\$23), or raspberry-grilled chicken (\$21). All entrees will be served with sides, a choice of starter, and choice of dessert.

Pop-Tarts Bowl Watch Party

Thursday, Dec. 28, at 4:45 p.m.

You're invited to the Pop-Tarts Bowl Watch Party Thursday, Dec. 28, in the Game Room and Verna Belle's Lounge. Watch as the Cats take on the Wolfpack of North Carolina State. The game begins at 4:45 p.m. Refreshments will be provided.

College Avenue UMC Luncheon

Thursday, Dec. 28, at 12 p.m.

College Avenue United Methodist Church friends will join in fellowship, lunch, and communion with Rev. John Collins at 12 p.m. Thursday, Dec. 28, in the Manhattan Room. All are welcome.

Hot Topics in January

Monday, Jan. 8, at 6 p.m.

Join Rev. Melanie Nord at 6 p.m. each Monday in January starting Jan. 8 as we thoughtfully discuss

EVENTS & OPPORTUNITIES

commonly “hot” or controversial religious topics. We may not solve any problems but, together, we’ll look at what scripture, reason, tradition, and experience tells us about these difficult subjects.

Topics include: separation of church and state, science and religion, world religions, and human sexuality. Those in attendance will be expected to share calmly and hold respect for our fellow attendees in their sharing.

Ladies Luncheon

Thursday, Jan. 11, at 11:30 a.m.

An upcoming Ladies Luncheon will honor Kansas on Thursday, Jan. 11, 2024, at 11:30 a.m. in the Event Center. Kansas became a state on Jan. 29, 1861, and when every year rolls ’round, we try to celebrate. This year our state will be 163!

January hostess Polly Ferrell invites all ladies to join her at 11:30 a.m. on Thursday, Jan. 11, for a Kansas dinner of chicken pot pie and brownie ala mode. Please come and enjoy refreshing your knowledge of Kansas history and folklore.

Cost for this Ladies Luncheon is \$11. All ladies of the ML family are always invited to attend the Ladies Luncheon on the second Thursday of each month. If you would like to come, please sign up in the Blue Book at the Hospitality Desk.

Page Turners Book Club

Wednesday, Jan. 17, at 11:30 a.m.

Page Turners has concluded for the year. In 2024, we will continue to read books that have become movies. The group has picked a number of enticing reads including, *My Sister’s Keeper* by Jodi Picoult, the true WWII story, *Unbroken* by Laura Hillenbrand, and the classic western, *True Grit* by Charle Portis.

The group will start 2024 reading *Fried Green Tomatoes* by Fannie Flagg. The first discussion will take place on Wednesday, Jan. 17, at 11:30 a.m. in the Patriot Room. Please contact Katie Sigman at ksigman@meadowlark.org or (785) 323-3899 if you have any questions or need a copy of the book.

submitted by Jim Reed



DECK US ALL WITH BOSTON CHARLIE

Deck us all with Boston Charlie,
Walla Walla, Wash., an’ Kalamazoo!
Nora’s freezin’ on the trolley,
Swaller dollar cauliflower alleygaroo!
Don’t we know archaic barrel,
Lullaby Lilla Boy, Louisville Lou.
Trolley Molly don’t love Harold,
Boola boola Pensacoola hullabaloo!

1948

MARKET, from page 1

strived to keep their dressers, tables, and chairs looking good for as long as possible. Volunteers frequently are amazed to see gorgeous antiques or 60-year-old vintage pieces that are wheeled off the delivery truck in nearly new condition.

If a furniture item does arrive with a wobbly leg or a scratched edge, the aforementioned Hall and resident volunteer Vicky Auman tackle the issues, each with their own bags of supplies and tricks up their sleeves. Workers tasked with pricing the merchandise have learned to wait until Hall and Auman have worked their magic because the finished product usually will command a tag with a higher number.

Hall and Auman are two of 28 volunteers who worked with Becky Fitzgerald, Development Director, this year to prepare the inventory and/or assist customers when the shop is open. Volunteers are a mixture of residents, Passport members, community members, and K-State students. Eight of the year's volunteers completed various tasks in the weeks between the sales, with four of those also joining the others who greet and assist customers on Market days.

Jana Armfield, Meadowlark's Engagement Specialist, tracks volunteer hours and reports that at least 1,244 hours of service were donated.

"According to information found at *independentsector.org*, the national value of a volunteer is \$31.80 per hour," Armfield said. "That means Meadowlark volunteers have contributed \$39,559.20 worth of their time to the Market."

Obviously, the volunteers' talents and their enthusiasm for their roles and the Market's charitable mission contribute greatly to the Market's success and sustainability. Positive feedback from customers support that statement. A message sent in November via the Market's point of sale platform reads: Great cause to support! Great items! Wonderful volunteers! In October, a customer wrote: Love that this is available in Manhattan! Both customers gave the Market high marks for organization, environment, and timeliness.

While the majority of Market shoppers hail from Manhattan and nearby communities, the fundraiser also has attracted residents of Abilene, Council Grove, and the Kansas City area. The online

selling and buying platform eBay has extended the Market's reach even farther. Last year, a friend of Fitzgerald's offered to list collectible or out-of-the ordinary items on eBay with the hope of attracting more interested buyers and selling such items at higher prices than could be realized at the Market. That practice continues. A World War II-era doll sold earlier this month for \$200, \$50 higher than the doll's price when she sat on a Market shelf.

The 15-inch Women's Army Auxiliary Corps doll belonged to the late Ellie Brent and was donated to the Foundation by resident Ben Brent. "The story Ellie told me was that she was about 2 years old when her father was drafted and sent to Hawaii. While there, he bought Ellie this doll, probably at the PX, and shipped it home to Ellie."

According to a message sent by the doll's buyer,

See MARKET, page 7



[above] Collectibles, such as this World War II-era doll, add interest to the Market's inventory.

Art Engagement *from the* Beach Museum of Art

An artwork may have a focus of interest and a focal point. Often these two ideas may compete for the viewer's attention. A **focal point** attracts the viewer's eye and pulls it into the image. Focal points are often given strong emphasis using art elements. (color, value, texture, line, shape, form, and space). The **focus of interest** sparks the viewer's curiosity and holds their gaze. It is the main subject of the image. As you look at this selection of greeting cards from our collection, identify the focal point and then the focus of interest. Do you find the main area of interest holds your attention or does the focal point compete for your eye's attention? How did each artist emphasize the focal point?



[top left]

Feziich

Greetings, 20th century

Linocut on paper

KSU, Marianna Kistler Beach Museum of Art

S9.2022

[top right]

Herschel C. Logan (United States, 1901 - 1987)

***Season's Greetings*, 1968**

Metal relief print on paper

**KSU, Marianna Kistler Beach Museum of Art, gift of Lynn
McRae**

2022.51

[bottom left]

Charles Leroy Marshall Sr. (United States, 1905 - 1992)

***Untitled*, 1965**

Photomechanical reproduction on paper

**KSU, Marianna Kistler Beach Museum of Art, gift of Maybelle
M. Scheetz, 2002.507**

RESTAURANT **SPECIALS**

Sunday, Dec. 24	Sunday Brunch Brunch Menu available from 9 a.m. to 2 p.m.	\$12 Dinner Philly Cheesesteak Sandwich French Fries
Monday, Dec. 25	Christmas Lunch <i>Reservations required.</i>	\$10 Dinner Box Dinner Delivery <i>Reservations required.</i>
Tuesday, Dec. 26	\$12 Lunch Caesar Steak Wrap Garlic Parmesan Fries	\$13 Dinner Spaghetti & Meatballs Garlic Toast Green Beans
Wednesday, Dec. 27	\$10 Lunch Chicken Fajita Quesadilla Corn Salad	\$14 Dinner Chicken Piccata Wild Rice Italian Salad
Thursday, Dec. 28	\$11 Lunch Pesto Chicken Melt Pasta Salad	\$17 Dinner Parmesan-Crusted Salmon Baked Sweet Potato Asparagus
Friday, Dec. 29	\$11 Lunch Soup & Salad Bar	\$15 Dinner Pork Tenderloin <i>with Red Pepper Pesto Sauce</i> Hashbrown Casserole Honey-Glazed Carrots
Saturday, Dec. 30	\$11 Lunch Fried Pork Cutlet Sandwich Roasted Red Potatoes	\$19 Dinner 6-oz. Ribeye Baked Potato Asparagus

Weekly Opportunities Calendar *Dec. 24 to Dec. 30*

Sunday • Dec. 24
10:30 a.m. ~ Christmas Eve Worship Service, CR
10:30 a.m. ~ Transportation to FUMC, VE

Monday • Dec. 25 *Put your trash at the curb!*
9:30 a.m. ~ Seated Strength, **1960 only**
10:30 a.m. ~ Christmas Day Worship Service, CR
10:30 a.m. ~ Weights 101, **1960 only**
11:30 a.m. ~ Sit & Be Fit, **1960 only**

Tuesday • Dec. 26 *Trash pick-up*
10:00 a.m. ~ Memory Activities Class, KSU CL
10:30 a.m. ~ Steady Yourself, **1960 only**
11:15 a.m. ~ Chair Yoga, **1960 only**
2:00 p.m. ~ 10-Point Pitch, GR

Wednesday • Dec. 27
9:30 a.m. ~ Seated Strength, CR **or 1960**
10:00 a.m. ~ Walmart/Dillons Shopping Trip, VE
10:00 a.m. ~ Mem. Care Partners Supp. Grp, FHR
10:00 a.m. ~ Memory Café, KSU CL
10:30 a.m. ~ Weights 101, CR **or 1960**
11:30 a.m. ~ Sit & Be Fit, CR **or 1960**
12:00 p.m. ~ Rock Steady Boxing, **BF**
3:00 p.m. ~ Sing-Along, FHR
3:00 p.m. ~ Rock Steady Boxing, CR
5:30 p.m. ~ 1st Floor Supper, MR

Thursday • Dec. 28
9:00 a.m. ~ Messenger Team, KSU CL
10:30 a.m. ~ Steady Yourself, CR **or 1960**
11:15 a.m. ~ Chair Yoga, **1960 only**
12:00 p.m. ~ College Avenue UMC Luncheon, MR
1:00 p.m. ~ Parkinson’s Exercise Class, CR
4:45 p.m. ~ Pop-Tarts Bowl Watch Party, GR & VBL

Friday • Dec. 29
7:00 a.m. ~ Rock Steady Boxing, **BF**
9:30 a.m. ~ Seated Strength, CR **or 1960**
10:30 a.m. ~ Weights 101, CR **or 1960**
11:30 a.m. ~ Sit & Be Fit, CR **or 1960**

Saturday • Dec. 30
9:30 a.m. ~ Band Bust Exercise Class, **1960 only**

Room Abbreviations

1960 , TV Channel 1960	KSU CL, KSU Classroom
BF , Body First	MM , 120 Scenic Drive
BR, Bison Room	MR, Manhattan Room
CR, Community Room	PR, Patriot Room
CY, Courtyard	PS, Prairie Star Restaurant
EC, Event Center	MSC , Manhattan Sr. Center
FHR, Flint Hills Room	VBL, Verna Belle’s Lounge
GC, Grosh Cinema	VE, Village Entrance
GR, Game Room	

MARKET, from page 4

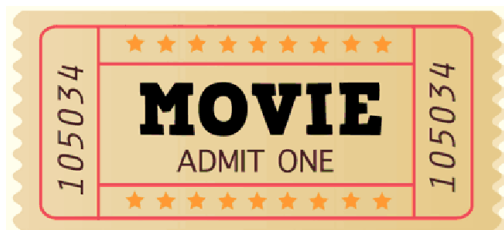
the doll is to be a Christmas present for her grandmother in Pennsylvania, who had a similar doll when she was a child. “I’m glad the doll sold for that much and that it’s going to someone who will really appreciate it,” Brent said.

Meadowlark Market returns in February of 2024; sale dates are Feb. 23 and 24. Staff and volunteers will work in January to pack and store unsold holiday items, sort and organize donations in storage, and prepare new inventory for display. The Market team appreciates the tremendous interest in and support of this fundraising effort, and asks their Meadowlark friends to please help spread the word about our shopping and saving opportunities. Market proceeds benefit the Good Samaritan Fund, which assists residents living in Meadowlark’s healthcare households who have outlived their financial resources.

If you would like to become a Market volunteer, please contact Jana Armfield at (785) 323-3890. If you have a possible donation item, large or small, please contact Becky Fitzgerald at (785) 323-3843.



[above] Patio sets are big sellers! A green metal table, donated by current residents, was spray-painted white to match four vintage chairs donated by an employee.



GROSH CINEMA SHOWTIMES

MONDAY TO SATURDAY 1:00 P.M. / 4:00 P.M. / 7:00 P.M.
SUNDAY 2:00 P.M. / 6:00 P.M.

SUNDAY: Dec. 24

A CHRISTMAS CAROL (2009) PG, 1 hr. 38 min. *Fantasy, Animation*

Cast: Jim Carrey, Gary Oldman, & Colin Firth

Ebenezer Scrooge begins the Christmas holiday with his usual miserly contempt, but when three ghosts take him on a journey revealing long-buried truths, he must open his heart to undo years of ill will before it's too late.

MONDAY: Dec. 25

SHOWTIMES: 2 P.M. & 3 P.M.

ANGELA'S CHRISTMAS (2018) TV-Y, 30 *Animation, Adventure*

Cast: Malachy McCourt, Ruth Negga, & Vivian Drew

A trip to church with her family on Christmas Eve gives young Angela an extraordinary idea. A heartwarming tale based on story by Frank McCourt.

TUESDAY: Dec. 26

THE FAMILY STONE (2005) PG-13, 1 hr. 43 min. *Comedy, Drama, Romance*

Cast: Dermot Mulroney, Sarah Jessica Parker, & Claire Danes

An uptight, conservative businesswoman accompanies her boyfriend to his eccentric and outgoing family's annual Christmas celebration, and finds that she's a fish out of water in their free-spirited way of life.

WEDNESDAY: Dec. 27

THE NUTCRACKER (1993) G, 1 hr. 33 min. *Musical, Drama, Family*

Cast: Macaulay Culkin, Bart Robinson Cook, & Jessica Lynne Cohen

A timeless Christmas fantasy ballet movie narrated by Kevin Kline.

THURSDAY: Dec. 28

THE CHRISTMAS CANDLE (2013) PG, 1 hr. 41 min. *Drama, Kids*

Cast: Hans Matheson, Samantha Barks, & Lesley Manville

In 19th-century England, a minister's quest to modernize his village puts him at odds with people who believe that whoever lights the candle that an angel touched will receive a miracle on Christmas Eve.

FRIDAY: Dec. 29

I BELIEVE IN SANTA (2022) PG, 1 hr. 30 min. *Charming, Feel-Good, Romantic*

Cast: Christina Moore, John Ducey, & Violet McGraw

After five happy months dating Tom, Lisa's horrified to learn he's obsessed with her least favorite holiday. Is it time to give Christmas another chance?

SATURDAY: Dec. 30

LEAVE THE WORLD BEHIND (2023) R *for language, sexual content, & drug use*, 2 hr. 21 min.

Cast: Julia Roberts, Mahershala Ali, & Ethan Hawke

A family's getaway to a luxurious rental home takes an ominous turn when a cyberattack knocks out their devices—and two strangers appear at the door.