

Hallowed History



by Sarah Duggan, Community Relations Director

In the early 2000s, Meadowlark was in phase two of a three-phase growth and evolution as a community. As a part of this expansion, Meadowlark planned to add a neighborhood of cottages known as Meadowlark Circle. However, there was a hurdle: a small family cemetery dating from the mid-1800s to 1900. The original cemetery had a least four formal headstones, all of which had been removed by early in the twentieth century. Thus, by the early twenty-first century, almost nothing was known about this cemetery other than its location.

In preparation for construction, and with exhumation authority

from Riley County District Court, the original cemetery was excavated in the summer of 2004 by professional archeologists under the direction of Donna C. Roper, Ph.D., of Manhattan.

The cemetery lies near the northwest corner of a parcel of land patented to Dr. William Henry Stillman in 1860. Born in Rhode Island, he first came to the Manhattan area in 1855 and took up land in Blue Township in western Pottawatomie County. He soon returned to Rhode Island, but then returned to Manhattan a few years later, only to find someone else had taken over his Blue Township land. At this time, he obtained the land in eastern Riley County that he held until his death.

He lived in a house, since demolished, on a small terrace low on the bluff slope, about 120 yards southeast of the original cemetery, which is where Meadowlark Circle duplexes now stand.

Stillman was a farmer and physician. During the 40 years he lived here, he provided indigent care and, in the period from at least 1800 to 1893, ran an unofficial poor farm. The possibility that he also operated an unofficial orphanage has not been confirmed. Stillman actively sold or leased portions of his property throughout his life, but he retained this portion of the property until his death in 1900.

Meadowlark hosted a Dedication and Re-Internment Ceremony for

See STILLMAN, page 9

EVENTS & OPPORTUNITIES

Classroom to Career

For the past several years, Meadowlark has participated in the Classroom to Career program facilitated through the Manhattan Area Chamber of Commerce. This year, Meadowlark is paired with Ms. Hollander's fourth-grade class at Bluemont Elementary.

Jayne Minton and Sarah Duggan have visited the class twice, and during one of the visits, the students were asked to design a coffee cup that they would use to promote Meadowlark or their own made-up coffee shop.

Five designs have been selected as finalists. Starting today, Oct. 26, through Tuesday, Oct. 31, you will have the opportunity to vote for your favorite design! View the cups and vote at the Hospitality Desk.

The class will visit Meadowlark on Wednesday, Nov. 1, and during their visit, the winner of the Coffee Cup Challenge will be announced and will receive a prize!

Employee Gift Committee

submitted by Leo Lake, Gift Fund Committee Chair

Your gifts to show appreciation for staff must be received by Oct. 31. Finding good employees is difficult in our society today. More important is keeping good employees, including those now employed at Meadowlark. Send your check now to help keep dedicated employees. Deliver to the lock box at the Hospitality Desk. Write your checks to the Employee Gift Fund. Thank you for your support.

Halloween Trick-or-Treat, canceled

Trick or treating on the trails has been canceled because of the low temperatures and rain forecasted between now and Halloween.

HOGtoberfest

Friday, Oct. 27, 11 a.m. to 8 p.m.

Don't miss a visit to HOG Heaven! Make your way to Prairie Star Restaurant & Event Venue between the hours of 11 a.m. and 8 p.m. Friday, Oct. 27, for the 10th annual HOGTOBERFEST, which benefits the Good Samaritan Fund. From 11 a.m. to 1 p.m. or 5 to 7 p.m. select German-style entrees, sides, and desserts from the buffet tables. If schnitzel or

spaetzle doesn't tempt you, select an entree from the limited Prairie Star Favorites menu. In keeping with HOGTOBERFEST tradition, Prairie Star is donating 10 percent of the day's proceeds to the Fund. *See the buffet menus below.*

While the food is sure to be HOG-tastic, a local bank and a musical group are adding to the fun. Central National Bank, a Prime sponsor, is bringing their Cash Cube and a guessing game featuring a piggy bank filled with coins. Reach into the Cube between 11 a.m. to 1 p.m. to win cash and/or prizes. The person with the closest guess to the amount of money in the bank wins the coin-filled bank!

Fiddler's Dream will entertain party-goers from 6 to 8 p.m. The group's repertoire is largely traditional and old-time, though all of the musicians dabble in a bit of everything. Members are Bob Atchison, fiddle/mandolin/banjo/harmonica; Melissa Atchison, guitar; Robert Rosenberg, guitar/banjo; Alice Boyle, fiddle; and Derrick Doty, fiddle/mandolin/banjo. Their performance is sponsored by Bell Family Foundation, and is the last Bell Music Series performance of 2023

A HOG-size cash prize of \$2000 could be yours if a ticket with your name on it is pulled from the Cash & More Raffle tumbler. Purchase tickets from a Meadowlark board member, at the Hospitality Desk, or at the event. In addition to the cash prize, nine other prizes will be awarded. If you're counting, that's 10 prizes to celebrate 10 years of FOOD, FRIENDS, and FUNdraising!

Finally, a limited number of HOGTOBERFEST T-shirts are available for \$22 each. Purchase yours by contacting Sarah Duggan at (785) 323-3878.

LUNCH BUFFET (11 a.m. to 1 p.m.)

German Meatballs with Spaetzle

Assorted Sausages with Sauerkraut, Caraway

Seeds, Apples and Onions

Weiner Schnitzel with Hunter's Sauce

Braised Red Cabbage

German Potato Salad

Bavarian Pretzel with Beer Cheese

Pumpernickel Rolls with Butter

Dessert: Black Forest Cake, Apple Strudel

DINNER BUFFET (5 to 7 p.m.)

Assorted Sausages with Sauerkraut, Caraway

EVENTS & OPPORTUNITIES

Seeds, Apples and Onions
Sauerbraten (Beef) with Mashed Potatoes
Weiner Schnitzel with Hunter's Sauce
Schweinebraten (Pork) with Roasted Carrots and Onions
Sides and Dessert: See lunch menu

KSU Football Watch Party

Saturday, Oct. 28, at 11 a.m.

You're invited to cheer on the Wildcats during the Homecoming game vs. the Houston Cougars on Saturday, Oct. 28. The game begins at 11 a.m. Watch Party festivities will occur in the Game Room, Bison Room, Grosh Cinema, and Verna Belle's Lounge. All are invited, and go 'Cats! The game will be broadcast on ESPN2.

Worship Service

Sunday, Oct. 29, at 10:30 a.m.

Join Pastor Melanie Nord for worship at 10:30 a.m. Sunday, Oct. 29, in the Community Room/Chapel. This week's sermon is titled, "Remembering the Saints." All are welcome to attend.

Documentary Film Screening

Sunday, Oct. 29, at 1 p.m.

Desiree Schippers, former KSU Meadowlark Anthropology Research Student (2018), is excited to share her recent work with you! Desiree is a recent graduate of Northwestern University's Documentary Media MFA Program, and is a documentary filmmaker and digital marketer based in Chicago. She will be screening her works *Fail First* and *Дом (Dom)*, which have screened in 10 film festivals across the US and England.

Join Desiree from 1 to 2 p.m. Sunday, Oct. 29, In the Grosh Cinema to view both films. *Fail First* (20 min.) follows a young woman as she navigates the absurdities and intricacies of fighting her insurance company for access to treatment for her chronic illness.

Дом (5 min.) is a meditative portrait of a young man as he reflects on his concept of home, family, and belonging. As a Russian expatriate, his situation is increasingly complicated by political and global uncertainties, feelings of disconnection from his home country, and searching for a sense of home.

Pd Care Partner Training Series

Monday, Oct. 30, at 12 p.m.

The seven-week, 10-session, free PD Care Partner training program offered by the Davis Phinney Foundation continues Monday, Oct. 30, and Friday, Nov. 3. Registration is not required to attend.

Session Eight meets from 12 to 1 p.m. Monday, Oct. 30, in the KSU Classroom and is titled "Navigating the Healthcare System, Medicare, and Patient can Care Partner Support."

Session Nine meets from 2 to 4 p.m. Friday, Nov. 3, in the KSU Classroom and will cover uncertainty, anticipatory grief, and ambiguous loss.

Salon Conversation

Monday, Oct. 30, at 3 p.m.

Join Jayme Minton, Support Services Director, for a conversation regarding updates about salon services on Meadowlark's campus. This opportunity will be offered at 3 p.m. Monday, Oct. 30, in the Event Center.

Halloween & Spiritual Influences Lecture

Monday, Oct. 30, at 7 p.m.

Join Pastor Melanie Nord at Monday, Oct. 30, at 7 p.m. in the Bison Room for a lesson and discussion about the religious and spiritual influences on Halloween. We'll discuss topics ranging from what does the Bible say about demons and ghosts to learning the impact the religious tradition of All Hallows Eve and All Saints has on this cultural holiday.

ARTful Memories (rescheduled)

Tuesday, Oct. 31, at 10 a.m.

ARTful Memories is a Meadowlark Memory Program collaboration with the Marianna Kistler Beach Museum of Art using Visual Thinking Strategies (VTS). Kim Richards, Education Assistant, will conduct a facilitated discussion of three different art images with joint participation by memory care receivers and caregivers. All are invited to attend at 10 a.m. Tuesday, Oct. 31, in the KSU Classroom.

See EVENTS, page 4

EVENTS & OPPORTUNITIES

EVENTS, from page 3

Vinyl Fright Night!

Tuesday, Oct. 31, at 6:45 p.m.

Dress up and bring your best records! All are invited to the Event Center at 6:45 p.m. Tuesday, Oct. 31. Join emcee and bartender, Domingo, as he hosts Vinyl Night Fright! Domingo will take requests, or you can bring a record to enjoy. Feel free to dance or sit back and reminisce as the records spin! The bar will be open for cocktails and mocktails as we take a trip down memory lane with some great vinyl records on Halloween night.

Page Turners Book Club

Wednesday, Nov. 1, at 11:30 a.m.

The mystery has been solved and now it is time to watch the movie! Special Programs, along with Resident Services Leader Monte Spiller, invite everyone to enjoy the thrill of Agatha Christie's *Death on the Nile*. The movie will be showing at 1, 4, and 7 p.m. on Halloween, Oct. 31. The Page Turners Book Club will discuss the differences between the book and the movie on Wednesday, Nov. 1, at 11:30 a.m. in the Patriot Room. Everyone is welcome to come enjoy the discussion and a themed snack, whether you have finished the book, are just beginning, or watched the movie!

The next book the group will be reading is *Little Women* by Louisa May Alcott, and we are planning a fun trip to Wamego in December to see the play. Discussions of this book will begin on Nov. 15. If you have any questions, contact Katie at ksigman@meadowlark.org or call (785) 323-3899.

Meadowlark Men's Social Supper

Wednesday, Nov. 1, at 5:30 p.m.

Prairie Star Restaurant invites Meadowlark's men to attend a Social Supper at 5:30 p.m. Wednesday, Nov. 1, at Prairie Star Restaurant. Dinner can be purchased from the Prairie Star menu, or enjoy the daily special. Registration is not required, but please check in at the host stand when arriving. This is a casual dining opportunity, and it will not feature a program.

UFM Class: Leonardo & Michelangelo

Wednesday, Nov. 1, at 1:30 p.m.

UFM Lifetime Learning presents *Leonardo and Michelangelo* taught by Dr. Douglas N. Dow, professor at K-State. This three-session course will begin Wednesday, Nov. 1, from 6:30 to 7:30 p.m. in the Community Room. The second and third sessions will meet Wednesday, Nov. 8, and Nov. 15.

Leonardo da Vinci and Michelangelo Buonarroti are synonymous with the Italian Renaissance. Celebrated for their achievements in art, architecture, and engineering, the two have been credited with ushering in a new era through a careful study of nature and ancient culture. This course explores their life histories and examines several of their most famous works of art.

Dr. Douglas N. Dow is an expert on the art and architecture of the Italian Renaissance. A professor at Kansas State University since 2007, Dr. Dow's teaching has been recognized with several awards, including the Commerce Bank and W. T. Kemper Foundation Outstanding Undergraduate Teaching Award. Professor Dow also has published several articles and two books on sixteenth-century Italian art.

Enrollment is now open and can be completed by calling (785) 539-8763. This class is offered through UFM at no charge to Meadowlark residents, and Passport members may attend with a 20-percent discount.

Pd Education Group

Thursday, Nov. 2, at 2 p.m.

You're invited to the monthly meeting of the Pd Education Group at 2 p.m. Thursday, Nov. 2, in the Community Room.

This month's program is titled, "When Merry & Bright Is Not Easy: Navigating Grief, Stress, and Illness During the Holidays," presented by Dr. Marcie Lechtenberg, PhD, LMFT.

Licensed individual, couple, and family therapist, Dr. Marcie Lechtenberg specializes in helping individuals with chronic illness live well. She will provide tools for all affected by Pd to help you clarify holiday expectations, improve communication with loved ones, and find joy as we approach the holiday season.

EVENTS & OPPORTUNITIES

No registration is required to attend. If you have questions, please call Michelle at (785) 323-3899.

Dinner with the League

Thursday, Nov. 2, at 6 p.m.

You're invited to join Dinner with the League of Women Voters at 6 p.m. Thursday, Nov. 2, in Prairie Star Restaurant's Event Center. The program will be *Mom's Demand Action Legislative Agenda* presented by Heath Thomas, Ron Thomas, and Carl Reed.

Residents are invited to attend the program and/or meal. Dinner will cost \$15 per person and will include a orange chicken, white rice, stir fry vegetables, a roll, and a beverage. There is no cost to attend the program only, which begins at 6:30 p.m. Please sign up in the Blue Book by Monday, Oct. 30, to attend dinner.

Tandem Moons

Friday, Nov. 3, at 7 p.m.

Meadowlark is excited to welcome back Tandem Moons at 7 p.m. Friday Nov. 3, in the Event Center! The smooth sounds of Samantha Williams and Colton Jones are delightful as they present a jazz, folk, and blues sounds that won't disappoint.

KSU Football Watch Party

Saturday, Nov. 4, TBD

You're invited to cheer on the Wildcats during the Homecoming game vs. the Texas Longhorns on Saturday, Nov. 4. Kick-off time has not yet been announced. Watch Party festivities will occur in the Game Room, Bison Room, Grosh Cinema, and Verna Belle's Lounge.

Pest Control

Monday, Nov. 6

On Monday, Nov. 6, Meadowlark Maintenance team members will be escorting pest control to the cottages and the Monarch apartments. If you do not want pest control to enter your residence, please contact Mike Davis at (785) 323-3851. These areas are sprayed every other month.

Town Meeting

Monday, Nov. 6, at 9:30 a.m.

You're invited to attend the monthly Town Meeting at 9:30 a.m. Monday, Nov. 6, in the Event Center. Hear updates from Meadowlark leaders about the upcoming events and news for our campus. If you are unable to attend Town Meeting, printed agendas will be available at the Hospitality Desk after the meeting concludes.

The Challenges of Styrofoam

submitted by Polly Ferrell

Before the COVID pandemic, MLH was a Styrofoam-free facility. Led by the diligent efforts of the Green Committee (active resident committee in the early 2000's) we ceased using Styrofoam cups and take-out containers. Instead we used biodegradable items.

At our October Town Meeting, the question was asked about when we will go back to our pre-pandemic "no Styrofoam at MLH." Jayme Minton spoke to the fact that our previous non-Styrofoam containers were not available to purchase during the pandemic, so Styrofoam became the default choice. Now we have a backlog of Styrofoam cups and food containers. Also, biodegradable containers and cups are more expensive.

I came home from the meeting and did some research that could be useful to all of us. Here it is.

Styrofoam was patented in 1944. Today there is a global movement to phase out polystyrene foam. As of 2023, 65 countries have banned Styrofoam.

As of 2023, 11 U.S. states have passed legislation to ban Styrofoam and at least seven other sates have partial bans.

Styrofoam is not biodegradable. Styrofoam will be in our landfills for at least 500 years. Styrofoam chemicals leach into food and drinks, causing health issues. Asking "How much Styrofoam is safe?" is like asking "How much poison is safe?"

What can we do? Encourage legislations to ban Styrofoam in Kansas. Use "real" plates, bowls, and cups. Stop storing food and drinks in Styrofoam. Stop microwaving food in Styrofoam. As committed environmentalists, we could help pay the additional cost for non-Styrofoam containers at MLH. Together we can live healthier without Styrofoam.



PLEASE JOIN US FOR THE

Meadowlark Holiday Classic

FRIDAY, DECEMBER 1
3:00 PM

MEADOWLARK HILLS
PRAIRIE STAR EVENT CENTER

HOSTED BY: 

RSVP TO
PRAIRIE STAR HOST STAND OR 785-323-3820

REFRESHMENTS & HOLIDAY ENTERTAINMENT
RESERVATIONS REQUIRED!

Thanksgiving Dinner

Thursday, November 23

Reserve your spot at
Prairie Star Restaurant!
Seatings available between
11 a.m. & 1:30 p.m.
\$22/per person

Choice of Starter

BUTTERNUT SQUASH SOUP
GREEN SALAD
WITH CRANBERRY VINAIGRETTE
AMBROSIA SALAD

Entree

ROAST TURKEY
BAKED HAM
SAUSAGE SAGE DRESSING
CRANBERRY RELISH
MASHED POTATOES
GIBLET GRAVY
GREEN BEAN CASSEROLE
WHITE ROLLS WITH BUTTER

Choice of Dessert

PUMPKIN PIE
PECAN PIE



November Birthdays



Skilled Nursing

11/15 David Butler
11/17 Dixie Tessmann
11/22 Barbara Withee
11/27 Mary Lou Basham

Assisted Living

11/17 Donna Vaughan
11/21 Bernice Brighton

Independent Living

11/5 William Feyerharm

11/6 Sharon Spencer
11/7 Scott Merritt
11/7 Duane Miksch
11/7 Linda Weis
11/9 Eleanor Deibler
11/11 Phyllis Erickson
11/11 Doug Tippin
11/12 Lila Snell
11/13 Margaret Carlson

11/18 Judy Hostetter
11/19 Jo Lyle
11/24 Peg Ziser
11/25 Carma Lindeman
11/26 Jim Jorns
11/27 Don Dibble
11/28 Al St. Cyr
11/30 Jerry Connery

Bold denotes milestone birthdays of 70, 80, 90, or 100+!
Employee birthdays will no longer be listed in the Messenger.

Art Engagement *from the* Beach Museum of Art

Everybody likes a view from the house on the hill. What about looking up at the house from below? As you spend time viewing the two artworks shown here, how did the artists create the perspective that draws your eye to the houses? Consider converging lines, color and size changes from foreground to background and overlapping of objects. What more can you find that is the same or different between the two scenes?



Orval F. Hempler, (United States, 1915 - 1994)
Untitled, 20th century
Watercolor on paper
KSU, Marianna Kistler Beach Museum of Art, bequest
of Orval F. Hempler Estate, 1994.39



Norma Bassett Hall, (United States, 1888 - 1957)
Hill Farm, ca. 1934
Color woodblock print on paper
KSU, Marianna Kistler Beach Museum of Art,
2002.320

Notes

RESTAURANT **SPECIALS**

Sunday, Oct. 29	Sunday Brunch Brunch Menu available from 9 a.m. to 2 p.m.	Dinner \$14 BBQ Meatballs Scalloped Potatoes Roasted Broccoli
Monday, Oct. 30	\$11 Lunch Chicken Enchiladas Mexican Rice	\$14 Dinner Smothered Pork Chop <i>with Mushroom-Onion Gravy</i>
Tuesday, Oct. 31	\$11 Lunch Fish Tacos Cilantro Lime Rice	\$15 Dinner Beef & Italian Sausage Lasagna Garlic Bread Caesar Salad
Wednesday, Nov. 1	\$11 Lunch Meatloaf Sandwich Pub Chips	\$15 Dinner Chicken Cordon Bleu Rice Pilaf Roasted Broccoli
Thursday, Nov. 2	\$9 Lunch Hot Ham & Cheese Tomato Soup	\$16 Dinner Pork Tenderloin Mac & Cheese Brussel Sprouts
Friday, Nov. 3	\$11 Lunch Potato Bar	\$17 Dinner Braised Short Ribs Loaded Mashed Potatoes Fresh Green Beans
Saturday, Nov. 4	\$11 Lunch Hot Turkey Melt Pea Salad	\$17 Dinner Cinnamon-Apple Pork Chop Wild Rice Snap Peas

Weekly Opportunities Calendar Oct. 29 to Nov. 4

Sunday • Oct. 29 *Put your trash at the curb!*
10:30 a.m. ~ Worship Service, CR
10:30 a.m. ~ Transportation to FUMC, VE

Monday • Oct. 30 *Trash pick-up*
9:30 a.m. ~ Seated Strength, CR *or 1960*
10:30 a.m. ~ Weights 101, CR *or 1960*
11:30 a.m. ~ Sit & Be Fit, CR *or 1960*
1:00 p.m. ~ Parkinson's Exercise Class, CR *or 1960*
12:00 p.m. ~ Pd Care Partner Training, KSU CL
1:30 p.m. ~ God Talk, KSU CL
1:45 p.m. ~ Parkinson's Voice Class, CR
2:00 p.m. ~ Change & Loss Support Group, FHR
3:00 p.m. ~ Salon Conversation, EC
7:00 p.m. ~ Community Bingo, CR
7:00 p.m. ~ All Hallow's Eve: Religious & Spiritual Influences of Halloween, EC


Tuesday • Oct. 31
10:00 a.m. ~ ARTFul Memories, KSU CL
10:30 a.m. ~ Steady Yourself, CR *or 1960*
11:15 a.m. ~ Chair Yoga, CR *or 1960*
12:05 p.m. ~ Mat Yoga, CR
1:30 p.m. ~ UFM Class: Tao & Zen, CR
2:00 p.m. ~ 10-Point Pitch, GR
6:45 p.m. ~ Vinyl Fright Night!, EC

Wednesday • Nov. 1
9:30 a.m. ~ Seated Strength, CR *or 1960*
10:00 a.m. ~ Walmart/Dillons Shopping Trip, VE
10:00 a.m. ~ Mem. Care Partners Supp. Grp, FHR
10:00 a.m. ~ Memory Café, KSU CL
10:30 a.m. ~ Weights 101, CR *or 1960*
11:30 a.m. ~ Sit & Be Fit, CR *or 1960*
11:30 a.m. ~ Page Turners Book Club, PR
12:00 p.m. ~ Rock Steady Boxing, BF
3:00 p.m. ~ Sing-a-Long, FHR
3:00 p.m. ~ Rock Steady Boxing, CR
5:30 p.m. ~ Meadowlark Men's Supper, MR
6:30 p.m. ~ Leonardo & Michelangelo (UFM), CR

Thursday • Nov. 2
9:00 a.m. ~ Messenger Team, KSU CL
10:30 a.m. ~ Steady Yourself, CR *or 1960*
11:15 a.m. ~ Chair Yoga, CR *or 1960*
12:05 p.m. ~ Mat Yoga, CR
1:00 p.m. ~ Parkinson's Exercise Class, CR

Thursday • Nov. 2
2:00 p.m. ~ Parkinson's Education Group, CR
4:00 p.m. ~ Meadowlark Singers Practice, CR
5:30 p.m. ~ Meadowlark Circle Dinner, MR
6:00 p.m. ~ Dinner with the League, EC

Friday • Nov. 3
7:00 a.m. ~ Rock Steady Boxing, BF
9:30 a.m. ~ Seated Strength, CR *or 1960*
10:30 a.m. ~ Weights 101, CR *or 1960*
11:30 a.m. ~ Sit & Be Fit, CR *or 1960*
2:00 p.m. ~ Pd Care Partner Training, KSU CL
3:00 p.m. ~ Catholic Mass, CR
7:00 p.m. ~ Tandem Moons, EC

Saturday • Nov. 4
9:30 a.m. ~ Band Bust Exercise Class, *1960 only*
TBD ~ KSU  Watch Party, GR, BR, GC, & VBL

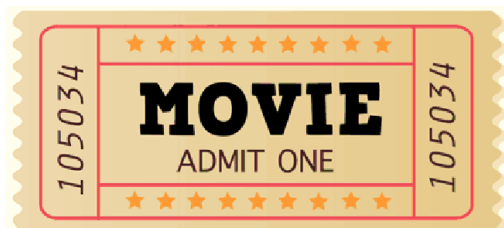
Room Abbreviations

1960, TV Channel 1960	KSU CL, KSU Classroom
BF, Body First	MM, 120 Scenic Drive
BR, Bison Room	MR, Manhattan Room
CR, Community Room	PR, Patriot Room
CY, Courtyard	PS, Prairie Star Restaurant
EC, Event Center	MSC, Manhattan Sr. Center
FHR, Flint Hills Room	VBL, Verna Belle's Lounge
GC, Grosh Cinema	VE, Village Entrance
GR, Game Room	

STILLMAN, from page 1

the Stillman Cemetery on Friday, Sept. 14, 2007, complete with period dress and a horse-drawn merchant wagon procession. Seventeen graves were re-interred. The video of the ceremony will be shown once a day starting Monday, Oct. 31, through Friday, Nov. 4, in Grosh Cinema. The showing each day will be at 10 a.m.

To visit the cemetery in its current location, enter Meadowlark's loop trail on the south side of Meadowlark Road at the northeast corner of campus, near the Tuttle Creek Entrance.



GROSH CINEMA SHOWTIMES

MONDAY TO SATURDAY 1:00 P.M. / 4:00 P.M. / 7:00 P.M.
SUNDAY 2:00 P.M. / 6:00 P.M.

SUNDAY: Oct. 29

THE HAUNTED MANSION (2003) PG, 1 hr. 29 min. *Thriller, Comedy, Fantasy*

Cast: Eddie Murphy, Terence Stamp, & Nathaniel Parker

With the help of supernatural psychic Madame Leota, a real estate agent and his family must battle to break Gracey Manor of its age-old curse.

MONDAY: Oct. 30

HOCUS POCUS (1993) PG, 1 hr. 36 min. *Family, Comedy, Fantasy*

Cast: Bette Midler, Sarah Jessica Parker, & Kathy Najimy

Conjured up by some unsuspecting pranksters, a tricky trio of 300-year-old witches set out to cast a spell on the town and reclaim their youth. But first, they must get their act together and outwit three kids and a talking cat.

TUESDAY: Oct. 31

PAGE TURNER REQUEST

DEATH ON THE NILE (2022) PG-13, 2 hr. 7 min. *Crime, Drama, Mystery*

Cast: Tom Bateman, Annette Bening, & Kenneth Branagh

While on vacation on the Nile, Hercule Poirot must investigate the murder of a young heiress.

WEDNESDAY: Nov. 1

COCO (2017) PG, 1 hr. 44 min. *Family, Fantasy, Music*

Cast: Anthony Gonzalez, Gael Garcia Bernal, & Benjamin Bratt

An aspiring young musician named Miguel embarks on an extraordinary journey to the magical land of his ancestors. There, the charming trickster, Hector, becomes an unexpected friend who helps Miguel uncover the mysteries behind his family's stories and traditions.

THURSDAY: Nov. 2

A CALL TO SPY (2019) PG-13, 2 hr. 4 min. *Suspenseful, Drama*

Cast: Sarah Megan Thomas, Stana Katic, & Radhika Apte

After France falls to the Nazis, two women seek to support the war effort by spying for a secret agency under Churchill. Based on a true story.

FRIDAY: Nov. 3

LAST VEGAS (2013) PG-13, 1 hr. 45 min. *Comedy, Sentimental*

Cast: Michael Douglas, Robert DeNiro, & Morgan Freeman

Four longtime buddies in their 60s reunite and try to relive their wild youth at a bachelor party, but old tensions surface and secrets spill.

SATURDAY: Nov. 4

WOODY WOODPECKER (2017) PG, 1 hr. 31 min. *Goofy, Family, Comedy*

Cast: Timothy Omundson, Thaila Ayala, & Eric Bauza

A rascally bird with a distinctive laugh pecks back with a vengeance when his forest habitat is threatened by a slick lawyer building his dream home.