

## Clothing Drive Success



What an amazing turnout for the annual Clothing Drive hosted by Meadowlark Ambassadors! The Meadowlark community was invited to bring clothes in new or gently used condition for those in need on Friday, Oct. 6. A record number of boxes (60+!) were filled with clothing items donated by many generous residents, staff, and Passport members.

Donations went to five organizations! This impressive list includes the Budget Shop, Encore Shop, Be Able, the Wamego Thrift Store, and Goodwill.



**[top left]** *left to right:* Meadowlark Ambassadors Vicky Auman, Nancy Bowen, Marilyn Ray, Don Dibble, Carole Fager, and Sharon Smith.

**[top right]** Meadowlark Ambassador Joan Jones helps box up clothing donations during the collection event.

**[bottom right]** *left to right:* Joan Jones, Vicky Auman, Don Dibble, and Karen Matthews work together to put together the clothing donations for delivery to five separate organizations.

## EVENTS & OPPORTUNITIES

### **East Tower Roof Work, rescheduled**

Due to high winds last Friday, the work on the East Tower roof was not completed. The contractor plans to work on the roof today, Oct. 19. Residents can expect some noise during this time.

### **Employee Gift Committee**

*submitted by Leo Lake, Gift Fund Committee Chair*

The Employee Gift Fund drive is winding down. We hope that if you have not sent your donation, you will send it soon. We send our grateful thanks if you have already contributed. If not, don't delay further. If you can afford a second check, it will help the cause. Keep in mind that Meadowlark is a large-scale facility with a staff of nearly 450. Don't wait! Help us exceed last year's giving. Do your best to keep the best!

### **HOGtoberfest & More!**

HOGTOBERFEST turns 10 this year, so we're planning a HOG-size celebration! Plan now to enjoy a special German-style menu at Prairie Star Restaurant beginning Oct. 18 and/or join us for a day-long party at the restaurant and event venue on Friday, Oct. 27. Since 2014, Meadowlark Foundation has teamed with community members for FOOD, FRIENDS, and FUNdraising to benefit the Good Samaritan Fund.

Another way to enjoy all three event components is to eat and shop at Meadowlark Market tomorrow, Oct. 20. Even though HOGTOBERFEST moved away from Aggieville this year, Scott Sieben, owner of Kite's Bar & Grill, Mr. K's, and Rockin K's, happily pledged his support by sharing proceeds from food sales and providing a raffle prize. Enjoy breakfast or lunch from Mr. K's Mobile Kitchen from 9 a.m. to 2 p.m. Oct. 20 at the Market, 120 N. Scenic Dr. In keeping with traditional HOG Heaven foods, hungry customers will see ingredients such as sausage, bacon, and pulled pork among the selections. Mr. K's is joining Prairie Star in donating 10 percent of the mobile kitchen's sales to the Good Samaritan Fund.

Meadowlark Market is open from 10 a.m. to 3 p.m. that day, so the public has been invited to arrive early and purchase breakfast or shop first, then buy lunch. If you've never been to the

Market, or you haven't been to the Scenic Drive location, this is an easy way to see the shop. Complimentary transportation is available for residents who'd like to join the FUN, so plan now to enjoy FOOD with FRIENDS!

To take advantage of this squeal-worthy opportunity, please register in the Blue Book. On Friday, Oct. 20, meet your driver at the Village entrance for an 11:30 a.m. departure. Lunch from Mr. K's food truck is on your own; seating will be available. After lunch, there'll be time to explore the Market. Transportation is scheduled for a 12:45 p.m. departure.

A special HOGTOBERFEST menu, featuring pork as well as German-inspired fare, is available at Prairie Star beginning Wednesday, Oct. 18. See Page 4 for this menu, which will be offered through Oct. 27.

### **Meet the Beekeeper**

*Friday, Oct. 20, at 9:30 a.m.*

Meadowlark's Outdoor Committee invites you to Meet the Beekeeper at 9:30 a.m. Friday, Oct. 20. Gary LaGrange of Valor Honey will visit with interested residents at the beehives south of the community garden along the trail. Learn about how the bees and Meadowlark's outdoor spaces interact. Park at the garden and bring your own seating.

### **Pd Care Partner Training Series**

*Friday, Oct. 20, at 2 p.m.*

The seven-week, 10-session, free PD Care Partner training program offered by the Davis Phinney Foundation continues tomorrow and Friday, Oct. 27. Registration is not required to attend.

Session Six meets from 2 to 4 p.m. Friday, Oct. 20, in the KSU Classroom and will cover the topics of guilt, anger, and symptom management.

Session Seven meets from 2 to 4 p.m. Friday, Oct. 27, in the KSU Classroom and will cover cognition, sleep, hallucinations, and delusions.

### **The History of Camp Wood**

*Friday, Oct. 20, at 7 p.m.*

Meadowlark is excited to have BJ Murray, CEO of Camp Wood, join us at 7 p.m. Friday, Oct. 20, in the Event Center. Murray will share the camp's history and what's happening now at Camp Wood.

## EVENTS & OPPORTUNITIES

Camp Wood YMCA was established 100 years ago by a small visionary group of Kansans. They were farmers, civil servants, businessmen, and teachers who were involved with the YMCA movement in their communities. And in 1915, even amid news of war, they believed in the power of summer camp and in its value to the young people of Kansas. That year, they set out to establish the state's first YMCA residence camp.

### Shopping at Target & Dollar Tree

**Saturday, Oct. 21, at 10:30 a.m.**

The next scheduled trip is Saturday, Sept. 16, with transportation going to Target and Dollar Tree West. The bus will depart from the Village Entrance at 10:30 a.m., and the return time is set for 11:45 a.m.

Next month's trip will travel to Hobby Lobby and Dollar Tree East on Saturday, Nov. 18. Please sign up in the Blue Book to participate.

### Memorial Service for Sandra Emley

**Saturday, Oct. 21, at 11 a.m.**

Sandra Lee Emley, 88, died peacefully the morning of Oct. 14, 2023 at the Good Shepherd Homecare and Hospice House in Manhattan, Kan.

Sandy and her husband, Don, were longtime residents of Meadowlark. Sandy also served on Meadowlark's Board of Trustees and the Foundation's Board of Directors.

The family will receive friends from 5 to 6:30 p.m. Friday, Oct. 20, at the Yorgensen-Meloan-Londeen Funeral Home.

Funeral services will be held at 11 a.m. Saturday, Oct. 21, at the First United Methodist Church, 612 Poyntz Avenue, Manhattan, Kan. 66502.

Online condolences may be left for the family through the funeral home website at [www.ymfuneralhome.com](http://www.ymfuneralhome.com).

Memorial contributions may be made to either the First United Methodist Church or Good Shepherd Homecare and Hospice, Inc. Contributions may be left in care of the Yorgensen-Meloan-Londeen Funeral Home, 1616 Poyntz Avenue, Manhattan, Kan. 66502.

### KSU Football Watch Party

**Saturday, Oct. 21, at 6 p.m.**

You're invited to cheer on the Wildcats during the home game vs. the TCU Horned Frogs Saturday,

Oct. 21. Light refreshments will be served at 5:30 p.m., and the game begins at 6 p.m. Watch Party festivities will occur in the Game Room, Bison Room, Grosh Cinema, and Verna Belle's Lounge. All are invited, and go 'Cats! The game will be broadcast on ESPN2.

### Worship Service

**Sunday, Oct. 22, at 10:30 a.m.**

Join Pastor Melanie Nord for worship at 10:30 a.m. Sunday, Oct. 22, in the Community Room/Chapel. This Sunday, she will continue the sermon series called *Being Mortal*. This week's sermon is titled, "The End is Not the End." All are welcome to attend.

### ARTful Memories

**Tuesday, Oct. 24, at 10 a.m.**

ARTful Memories is a Meadowlark Memory Program collaboration with the Marianna Kistler Beach Museum of Art using Visual Thinking Strategies (VTS). Kim Richards, Education Assistant, will conduct a facilitated discussion of three different art images with joint participation by memory care receivers and caregivers. All are invited to attend at 10 a.m. Tuesday, Oct. 24, in the KSU Classroom.

### Tenor & Piano Musical Program

**Tuesday, Oct. 24, at 7 p.m.**

You're invited to hear an exciting musical program at 7 p.m. Tuesday, Oct. 24, in the Community Room. Chris Melton, Tenor, and Dr. Songwa Chae, Piano, will perform a repertoire from Handel and Mendelssohn to contemporary American composers Jake Heggie and Loir Laitman.

The duo will also present *Poema en Forma de Canciones* by Joaquin Turina. Please attend and enjoy a night of beautiful music.

### Diabetic Wellness Group

**Wednesday, Oct. 25, at 1:30 p.m.**

The Diabetic Wellness Group will meet at 1:30 p.m. Wednesday, Oct. 25, in the Flint Hills Room. All who are interested are invited to attend.

See EVENTS, page 4

## EVENTS & OPPORTUNITIES

### EVENTS, from page 3

#### ARTFul Making

**Wednesday, Oct. 25, at 2:30 p.m.**

Is there anything spookier than a dark grove of haunted trees? We will be painting scraggly, gnarly Halloween forests! Come to the KSU Classroom at 2:30 p.m. Wednesday, Oct. 25, to create a seasonal painting with Kim Richards from the Beach Museum.

#### UFM Class: Finding Comfort in the Wake of War

**Wednesday, Oct. 25, at 6:30 p.m.**

UFM Lifetime Learning presents *Finding Comfort in the Wake of War* taught by Katharine Hensler, Director of the Riley County Historical Museum. This presentation will be offered at 6:30 p.m. Wednesday, Oct. 25, in the Community Room.

Hensler will discuss the research process historians, researchers, and genealogists face concerning errors made during the chaos of wartime, and how, as classified information is being made available to the public after its established retention schedule expires, is opening up worlds of new information toward the discovery of the truth. She will share the story of a local WWI soldier who was KIA near the Commune of Ploisy (Aisne), France, along the road to Soissons in July 1918 and the researchers in Riley County and across the United States working to tell his story.

Enrollment is now open and can be completed by calling (785) 539-8763. This class is offered through UFM at no charge to Meadowlark residents, and Passport members may attend with a 20-percent discount.

#### KSU Football Watch Party

**Saturday, Oct. 28, at 11 a.m.**

You're invited to cheer on the Wildcats during the Homecoming game vs. the Houston Cougars on Saturday, Oct. 28. Light refreshments will be served at 10:30 a.m., and the game begins at 11 a.m. Watch Party festivities will occur in the Game Room, Bison Room, Grosh Cinema, and Verna Belle's Lounge. All are invited, and go 'Cats! The game will be broadcast on ESPN2.

#### Documentary Film Screening

**Sunday, Oct. 29, at 1 p.m.**

Desiree Schippers, former KSU Meadowlark Anthropology Research Student (2018), is excited to share her recent work with you! Desiree is a recent graduate of Northwestern University's Documentary Media MFA Program, and is a documentary filmmaker and digital marketer based in Chicago. She will be screening her works *Fail First* and *Дом (Dom)*, which have screened in 10 film festivals across the US and England.

Join Desiree from 1 to 2 p.m. Sunday, Oct. 29, in the Grosh Cinema to view both films. *Fail First* (20 min.) follows a young woman as she navigates the absurdities and intricacies of fighting her insurance company for access to treatment for her chronic illness.

*Дом* (5 min.) is a meditative portrait of a young man as he reflects on his concept of home, family, and belonging. As a Russian expatriate, his situation is increasingly complicated by political and global uncertainties, feelings of disconnection from his home country, and searching for a sense of home.

#### Halloween & Spiritual Influences Lecture

**Monday, Oct. 30, at 7 p.m.**

Join Pastor Melanie at Monday, Oct. 30, at 7 p.m. in the Bison Room for a lesson and discussion about the religious and spiritual influences on Halloween. We'll discuss topics ranging from what does the Bible say about demons and ghosts to learning the impact the religious tradition of All Hallows Eve and All Saints has on this cultural holiday.

#### Halloween Trick-or-Treat

**Tuesday, Oct. 31, at 5:30 p.m.**

Manhattan community members, employee and resident families are invited to trick-or-treat at Meadowlark from 5:30 to 7:30 p.m. Tuesday, Oct. 31. Trick-or-treating families are asked to park in the CenterPointe Physicians' parking lot off of Tuttle Creek Boulevard or in the west employee/visitor parking lot on Meadowlark's campus.

The trick-or-treat path will run in a loop: west on Meadowlark Valley Road, south on Meadowlark Road, and down Donner's Way Trail.



# Art Engagement from the Beach Museum of Art

Color is a powerful tool for an artist. In many cultures color may communicate symbolism such as green for prosperity or purple for royalty. Emotions can be portrayed with color for example yellow expressing joy. Moods can be expressed with color; blue translates to calm. As you view the two prints shown here each artist used only one color to express a season. Before you look at the titles what seasons do you observe? If you wanted to experiment with changing the season what color would you use to communicate that to the viewer.



Oscar Vance Larmer (United States, born 1924), Kansas State University Friends of Art *Winter Landscape*, 1957  
Color woodcut on paper  
KSU, Marianna Kistler Beach Museum of Art, gift of Art & Angie Post in memory of Dr. A. D. "Dad" Weber, 1998.17



Herschel C. Logan (United States, 1901 - 1987) *Autumn*, 1924  
Color woodcut on paper  
KSU, Marianna Kistler Beach Museum of Art, Friends of the Beach Museum of Art purchase, 2000.103

## HOGTOBERFEST *Special Menu*

A special HOGTOBERFEST menu, featuring pork as well as German-inspired fare, is available at Prairie Star Restaurant from Wednesday, Oct. 18, through Friday, Oct. 27.

*10% of the price of the meal will be donated to Meadowlark Foundation's Good Samaritan Fund. Residents, please note that the donation amount will not be charged to your meal plan balance and will appear as a separate charge on your statement.*

### Beer

Three Rings Witch Hunt Oktoberfest, \$5

### Appetizer

Pretzel with German Beer Cheese, \$7

### Desserts

Apple Strudel, \$5

Black Forest Cake, \$5

### Entrees

Brat & Sauerkraut with Fried Potatoes, \$11

Pulled Pork Sandwich on a Pretzel Bun with a Cucumber Salad, \$13

Schnitzel & Gravy with Mashed Potatoes & Green Beans, \$15

Warm Sausage Platter Duo with German Potato Salad, \$16 (*Dinner only*)

# RESTAURANT SPECIALS

<b>Sunday, Oct. 22</b>	<b>Sunday Brunch</b> Brunch Menu available from 9 a.m. to 2 p.m.	<b>Dinner \$15</b> Beef Tips Mashed Potatoes & Gravy Broccoli
<b>Monday, Oct. 23</b>	<b>\$11 Lunch</b> Cheeseburger Sliders French Fries	<b>\$17 Dinner</b> Coconut Shrimp Coconut Rice Grilled Pineapple
<b>Tuesday, Oct. 24</b>	<b>\$10 Lunch</b> Bacon-Cheddar Egg Salad <i>served on a Croissant</i> Watermelon Salad	<b>\$17 Dinner</b> BBQ Meatloaf Cheesy Potatoes Baked Beans
<b>Wednesday, Oct. 25</b>	<b>\$12 Lunch</b> BBQ Riblette <i>served on a Hoagie with Onions &amp; Pickles</i> Pub Chips	<b>\$14 Dinner</b> Fried Pork Cutlet Mashed Potatoes & Gravy Green Beans
<b>Thursday, Oct. 26</b>	<b>\$11 Lunch</b> Italian Beef Sandwich Pasta Salad	<b>\$16 Dinner</b> Creamy Chicken Gnocchi Garlic Bread Roasted Zucchini
<b>Friday, Oct. 27</b>	<b>\$13 HOGtoberfest Lunch Buffet</b> German Meat Balls with Spaetzle Weinerschnitzel with Hunter's Sauce German Potato Salad & MORE!	<b>\$17 HOGtoberfest Dinner Buffet</b> Sauerbraten (Tangy Roast Beef) Schweinebraten (Pork Roast) with Roasted Carrots & Onions & MORE!
<b>Saturday, Oct. 28</b>	<b>\$11 Lunch</b> BBQ Chicken Sandwich Broccoli Salad	<b>\$15 Dinner</b> Fried Chicken Mashed Potatoes & Gravy Corn

# Weekly Opportunities Calendar Oct. 22 to Oct. 28

**Sunday • Oct. 22**      *Put your trash at the curb!*  
10:30 a.m. ~ Worship Service, CR  
10:30 a.m. ~ Transportation to FUMC, VE

**Monday • Oct. 23**      *Trash pick-up*  
9:30 a.m. ~ Seated Strength, CR *or 1960*  
10:30 a.m. ~ Weights 101, CR *or 1960*  
11:30 a.m. ~ Sit & Be Fit, CR *or 1960*  
1:00 p.m. ~ Parkinson's Exercise Class, CR *or 1960*  
1:30 p.m. ~ God Talk, KSU CL  
1:45 p.m. ~ Parkinson's Voice Class, CR  
2:00 p.m. ~ Change & Loss Support Group, FHR  
4:00 p.m. ~ Hable Espanol, FHR  
7:00 p.m. ~ Community Bingo, CR

**Tuesday • Oct. 24**  
10:00 a.m. ~ ARTful Memories, KSU CL  
10:30 a.m. ~ Steady Yourself, CR *or 1960*  
11:15 a.m. ~ Chair Yoga, CR *or 1960*  
12:05 p.m. ~ Mat Yoga, CR  
1:00 p.m. ~ Fit 2 Fight Pd, *MSC*  
1:30 p.m. ~ UFM Class: Tao & Zen, CR  
2:00 p.m. ~ 10-Point Pitch, GR  
3:00 p.m. ~ Coffee Corner, EC  
5:30 p.m. ~ 3rd Floor Supper, BR  
7:00 p.m. ~ Tenor & Piano Musical Program, CR

**Wednesday • Oct. 25**  
9:30 a.m. ~ Seated Strength, CR *or 1960*  
10:00 a.m. ~ Walmart/Dillons Shopping Trip, VE  
10:00 a.m. ~ Mem. Care Partners Supp. Grp, FHR  
10:00 a.m. ~ Memory Café, KSU CL  
10:30 a.m. ~ Weights 101, CR *or 1960*  
11:30 a.m. ~ Sit & Be Fit, CR *or 1960*  
12:00 p.m. ~ Rock Steady Boxing, *BF*  
1:30 p.m. ~ Diabetic Wellness Group, FHR  
2:30 p.m. ~ ARTful Making, KSU CL  
3:00 p.m. ~ Sing-a-Long, FHR  
3:00 p.m. ~ Rock Steady Boxing, CR  
5:30 p.m. ~ 1st Floor Supper, MR  
6:30 p.m. ~ UFM Class: Finding Comfort in the Wake of the War, CR

**Thursday • Oct. 26**  
9:00 a.m. ~ Messenger Team, KSU CL  
10:30 a.m. ~ Steady Yourself, CR *or 1960*  
11:15 a.m. ~ Chair Yoga, CR *or 1960*  
11:30 p.m. ~ Caring Conversations for People with Pd, FHR

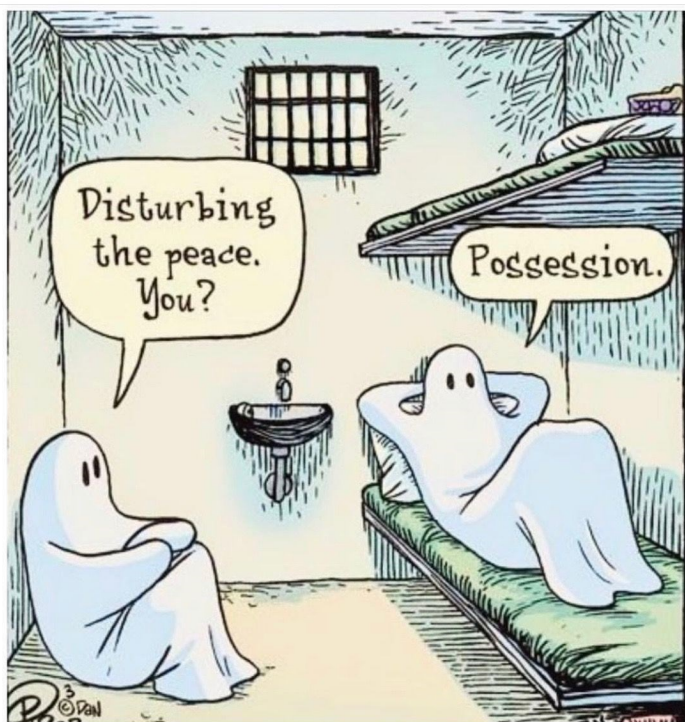
**Thursday • Oct. 26**  
12:05 p.m. ~ Mat Yoga, CR  
1:00 p.m. ~ Parkinson's Exercise Class, CR  
1:00 p.m. ~ Pd Care Partner Support Group, FHR  
4:00 p.m. ~ Meadowlark Singers Practice, CR

**Friday • Oct. 27**  
7:00 a.m. ~ Rock Steady Boxing, *BF*  
9:30 a.m. ~ Seated Strength, CR *or 1960*  
10:30 a.m. ~ Weights 101, CR *or 1960*  
11 a.m. to 8 p.m. ~ HOGtoberfest, PS  
11:30 a.m. ~ Sit & Be Fit, CR *or 1960*  
2:00 p.m. ~ Pd Care Partner Training, KSU CL  
6:00 p.m. ~ HOGtoberfest Music Entertainment, EC

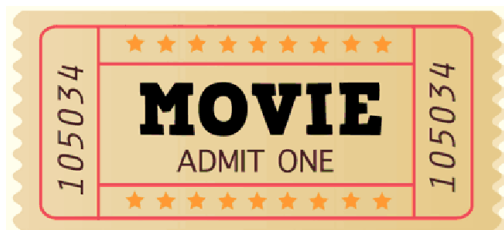
**Saturday • Oct. 28**  
9:30 a.m. ~ Band Bust Exercise Class, *1960 only*  
11 a.m. ~ KSU  Watch Party, GR, BR, GC, & VBL

## Room Abbreviations

<i>1960</i> , TV Channel 1960	KSU CL, KSU Classroom
<i>BF</i> , Body First	<i>MM</i> , 120 Scenic Drive
BR, Bison Room	MR, Manhattan Room
CR, Community Room	PR, Patriot Room
CY, Courtyard	PS, Prairie Star Restaurant
EC, Event Center	<i>MSC</i> , Manhattan Sr. Center
FHR, Flint Hills Room	VBL, Verna Belle's Lounge
GC, Grosh Cinema	VE, Village Entrance
GR, Game Room	







## GROSH CINEMA SHOWTIMES

MONDAY TO SATURDAY 1:00 P.M. / 4:00 P.M. / 7:00 P.M.  
SUNDAY 2:00 P.M. / 6:00 P.M.

### SUNDAY: Oct. 22

***HALLOWEENTOWN*** (1998) TV-PG, 1 hr. 24 min. *Comedy, Fantasy, Action-Adventure*

Cast: Debbie Reynolds, Judith Hoag, & Kimberly J. Brown

Marnie and her younger siblings travel with their estranged grandmother, who is a good witch, to Halloweentown—a place where creepy creatures lead very normal lives. On her 13th birthday, Marnie gets a supernatural surprise when she discovers that she, too, is a witch.

### MONDAY: Oct. 23

***CRUELLA*** (2021) PG-13, 2 hr. 17 min. *Drama, Crime*

Cast: Emma Stone, Emma Thompson, & Joel Fry

Set in 1970s London amidst the punk rock revolution, the story follows a young grifter named Estella and reveals the series of events that cause her to embrace her wicked side and become the raucous and revenge-bent Cruella de Vil.

### TUESDAY: Oct. 24

***RITA MORENO: JUST A GIRL WHO DECIDED TO GO FOR IT*** (2021) PG-13, 1 hr. 30 min. *Intimate*

Cast: Rita Moreno

Emmy, Grammy, Oscar, and Tony winner Rita Moreno helps narrate the story of her remarkable 70-year Hollywood career with audacity and wry humor.

### WEDNESDAY: Oct. 25

***UNDER WRAPS 2*** (2022) TV-G, 1 hr. 23 min. *Comedy, Fantasy*

Cast: Malachi Barton, Christian J. Simon, & Sophia Hammons

Amy is preparing for her father's Halloween-themed wedding to his fiancé Carl, when Amy, Gilbert, and Marshall discover that their mummy friend, Harold, and his beloved Rose may be in danger.

### THURSDAY: Oct. 26

***LIVING*** (2022) PG-13, 1 hr. 42 min. *Understated, Intimate*

Cast: Bill Nighy, Aimee Lou Wood, & Alex Sharp

A rigid formal English bureaucrat's icy reserve begins to melt when a dire prognosis inspires him to build a surprising legacy.

### FRIDAY: Oct. 27

***KILLERS*** (2010) PG-13, 1 hr. 40 min. *Exciting, Romantic, Comedy*

Cast: Katherine Heigl, Ashton Kutcher, & Tom Selleck

After a whirlwind romance, Jen and Spencer settle into married life—until Spencer's secret past as a hitman shakes up their suburban bliss.

### SATURDAY: Oct. 28

***THE CURSE OF BRIDGE HOLLOW*** (2022) TV-14, 1 hr. 31 min. *Quirky, Irreverent, Feel-Good*

Cast: Marlon Wayans, Priah Ferguson, & Kelly Rowland

A Halloween-hating dad reluctantly teams up with his teenage daughter when an evil spirit wreaks havoc by making their town's decorations come to life.