

GOERING



TEAGUE



Meet the Artists

2023 fundraiser attracts sought-after regional painters

KRISTIN GOERING

of Fairway, Kan., was inspired to pursue art from a young age. She received her Fine Arts degree with an emphasis in printmaking from Bethel College in 1992. Her early career was spent as a freelance artist and illustrator with the Mennonite Press and Hearth Publishing in Newton, Kan. Her stylized brushstrokes and an intensified palette move beyond simple representationalism, conveying an inherent energy that extends the viewer's concept of the natural world.

See GOERING, page 6



Art Mingle
Wonder & Whimsy 2023

Connect with honored guest artists Kristin Goering and Nancy Teague at Art Mingle on April 28. Each will display and sell work in her Artist Showcase area at Prairie Star's Event Venue. Steel & Pipe Supply is the Artist Showcases sponsor.

NANCY TEAGUE

graduated from the University of Nebraska with a bachelor's in education, then subsequently taught three years in the Lincoln public schools before beginning her art career that has spanned four decades. Her

early work was realistic and captured the transforming effects of natural light on old or discarded objects.

In 2013, Teague made a huge shift to Abstract Expressionism, precipitated by internal spiritual dynamics bringing joy and freedom that could not but

See TEAGUE, page 7

EVENTS & OPPORTUNITIES

Spiritual Survey Update

In February and March, Reverend Melanie Nord and Support Service Director Jayme Minton examined the spiritual needs of our community through a variety of methods such as a listening session, survey, and individual conversations with residents and staff. Approximately 30 people attended the listening session and just under 50 completed the survey.

There were some strong common trends in the results:

1. Residents are enjoying Sunday Worship in its current form with Pastor Melanie Nord, Resident Services Leader Monte Spiller, and guest preachers.
2. Residents prefer to be connected to their home church pastors, when possible. However some are far away from or do not have home church support, so it is beneficial to have spiritual support at Meadowlark to fill the gaps.
3. Residents prefer a religious leader to gain trust and relationship with rather than a rotation of several different ministers or churches.
4. Group life and creative non-Sunday spiritual opportunities are wanted.

Based on the results and availability of a consistent spiritual support presence, Meadowlark will continue to utilize the leadership of Pastor Melanie Nord, Monte Spiller, and guest preachers for Sunday worship and will to continue to contract Pastor Melanie for special holiday services and group opportunities at Meadowlark Hills for residents, Passport members, and their guests/families.

The best is yet to come! You can expect to find many exciting spiritual services this summer from a Forest Bathing Workshop, Beer and Hymns event, and Christmas in July Sunday. You'll also have study opportunities examining beloved stories of our Old Testament like Jonah, Ruth, and Esther, as well as a discussion group asking the tough question of "why do bad things happen to good people?" Questions can be directed to Pastor Melanie Nord after Sunday Worship or via email at melanielea@gmail.com. If you ever have a pastoral emergency need, you can contact Jayme and/or Meadowlark staff to be directed to your local pastor or Pastor Melanie.

Cool Careers?

Did you have a cool, fun, and/or interesting career? We need your help! Meadowlark will host Mrs. Gehrt's fourth-grade classroom from St. George Elementary on Tuesday, April 25. This field trip is part of the Manhattan Area Chamber of Commerce's Classroom-to-Career Partnership, which connects area businesses and organizations with fourth-grade classrooms in Riley and Pottawatomie counties to help students consider their future careers.

After our initial visit with Mrs. Gehrt's class, it was clear that the students are very interested in meeting residents and learning from them. As part of the field trip experience, we will have small round table sessions with resident volunteers and students from 1 to 2 p.m. The format is designed for residents to explain their careers (include any education, fun facts, highlights, etc.) to a small group of students, and the students will have an opportunity to ask questions. The students will then move from station to station. If you are interested in participating, please contact Jayme Minton at (785) 313-0454 or sign up in the Blue Book at the Hospitality Desk.

UFM Class: Religions of Southeast Asia

Friday, April 14, at 11:30 a.m.

UFM Lifetime Learning presents *Religions of Southeast Asia* taught by Dr. Michael Wesch, a professor of anthropology at K-State. The second session will meet Friday, April 14, at 11:30 a.m. in the Community Room. The final class will meet April 21. Call (785) 539-8763 for enrollment information.

In this class, we will explore the religions of Southeast Asia as they are actually lived and experienced by people in Thailand and Vietnam. We will explore Buddhism, Taoism, Confucianism, and Cao Dai. Cao Dai is a religion that blends all of these together with Christianity.

Saturday Shopping Trip

Saturday, April 15, at 10:30 a.m.

The next scheduled trip is Saturday, April 15, with transportation going to Target and Dollar Tree West. The bus will depart from the Village Entrance at 10:30 a.m., and the return time is set for 11:45 a.m. Please sign up in the Blue Book.

EVENTS & OPPORTUNITIES

Worship Service

Sunday, April 16, at 10:30 a.m.

Join Rev. Melanie Nord for worship at 10 :30 a.m. Sunday, April 16, in the Community Room/Chapel. This will be the first of our new sermon series titled "Call Stories" during which we'll explore the ways in which God inspires us to follow our hearts and dreams. This Sunday, the message is titled "What Is a Call?"

Manhattan Catbackers

Monday, April 17, at 5 p.m.

You're invited to hang with the Manhattan Catbackers! The group will be on campus starting at 5 p.m. Monday, April 17, in the Courtyard and Prairie Star Restaurant. Enjoy a Pasta Bar buffet for \$12 a person and hear from KSU Football Coach Chris Klieman around 6 p.m. Let's go Cats!

UFM: More Than Steel & Wheels

Tuesday, April 18, at 10 a.m.

UFM Lifetime Learning presents *More Than Steel and Wheels* taught by Doug Meloan and Chris Gergeni, from 10 a.m. to noon Tuesday, April 18, **at the Midwest Dream Car Collection.**

Transportation to the museum will depart from the Village Entrance at 9:45 a.m. You must be enrolled in the class through UFM to attend.

Join automobile enthusiasts Doug and Chris from Midwest Dream Car Collection as they lead a class through an in-depth look at the design and technology which shaped the early automotive industry. More than just steel and wheels, automobiles are rolling engineering marvels showcased in beautiful designs that changed with the times.

Doug is the current Director of Vehicle Operations/Curator at Midwest Dream Car Collection and Chris is the museum's Executive Director. Together these two gentlemen enjoy researching and learning the history of the automobile and sharing their passion and knowledge with others.

Enrollment is now open and can be completed by calling (785) 539-8763. This class is offered through UFM at no charge to Meadowlark residents, and Passport members may attend with a 20-percent discount.

Prairie Star Writers Group

Tuesday, April 18, at 2 p.m.

Interested in joining the writing group at Meadowlark? Prairie Star Writers invites you to attend the next meeting at 2 p.m. Tuesday, April 18, in the Patriot Room.

The April 18 session is titled "If you must know, I'm really good at ...". In the future decades, those who read our stories might want to know what makes us proud about our individual journey on this planet. Writers is led by Cathy Hedge. The group meets on the first and third Tuesdays.

FUMC Communion

Wednesday, April 19, at 9:30 a.m.

Join Pastor Barry Dundas from First United Methodist Church at 9:30 a.m. Wednesday, April 19, in the Bison Room to receive communion. The opportunity is open to anyone wanting to invite Christ into his or her heart.

Page Turners Book Club

Wednesday, April 19, at 11:30 a.m.

Meadowlark Special Programs is working with Monte Spiller, Resident Services Leader, to facilitate the Page Turners Book Club. Residents, Passport members, and program participants are encouraged to participate in this bi-monthly gathering to socialize, engage, and discuss a popular book that became a movie. Our next book will be *The Help* by Kathryn Stockett. We have books on loan from the Manhattan Public Library, so please reach out to Michelle Haub or Monte if you would like to borrow one.

All are invited! One does not have to attend each week to participate, and please come when you are able whether you have finished the book or are just beginning!

Page Turners will meet from 11:30 a.m. to 12:30 p.m. every other Wednesday in the Patriot Room beginning April 19. Please sign up in the Blue Book at the Hospitality Desk. For questions contact Michelle or Monte.

Don't Get Scammed!

Wednesday, April 19, at 2 p.m.

Join Sophie Maranville, Bank Manager at Landmark National, for a presentation titled, "Don't Get

See EVENTS, page 4

EVENTS & OPPORTUNITIES

EVENTS, from page 3

Scammed” at 2 p.m. Wednesday, April 19, in the Bison Room. This presentation will address issues regarding scams and ways to avoid becoming a victim. All are welcome.

Artist Discussion with the Beach

Wednesday, April 19, at 4 p.m.

Join Kim Richards from Beach Museum of Art for “Anni Albers: A Graphic Art Weaver,” at 4 p.m. Wednesday, April 19, in the Bison Room. Albers was a leading textile artist in the 20th Century. Through creating, teaching, and writing she challenged viewers ideas of color and art processes. We will view her many modern weavings and innovative print techniques.

Technology Drop In

Thursday, April 20, at 9 a.m.

Are you new to technology or need help with existing computer questions? Take advantage of a one-on-one help with tablets, laptops, and phones. This opportunity is offered by Wandean Rivers with Manhattan Public Library every third Thursday from 9 to 11 a.m. in the Flint Hills Room. Registration is not required to attend.

Pig Out for Parkinson’s

Thursday, April 20, from 11 a.m. to 10 p.m.

Pig Out is set for Thursday, April 20, at Rockin K’s restaurant. The event, presented by CenterPointe Physicians, features food specials, music from DJ Dan, and appearances by K-State celebrities, including former K-State Football Coach Bill Snyder. There also will be opportunities to learn about Meadowlark Parkinson’s Program resources and treatment for Parkinson’s disease (Pd) from team members and vendors.

Attending Pig Out for Parkinson’s is one opportunity to show support for Meadowlark Parkinson’s Program, as 10 percent of Rockin K’s sales for the day benefit Meadowlark Parkinson’s Program. In addition to eating in person, residents are welcome to place to-go orders by completing the form included in today’s edition of the Messenger or available at the Hospitality desk.

Card Making with Michelle Lehmer

Thursday, April 20, at 2:30 p.m.

The next Card Making with Michelle Lehmer class will occur on Thursday, April 20, at 2:30 p.m. in the Flint Hills Room.

Pd Presentation with Dave Iverson

Thursday, April 20, at 7 p.m.

You’re invited to “Search for Winter Stars: One Family’s Journey with Parkinson’s and Caregiving” at 7 p.m. Thursday, April 20, in Rockin K’s event space at 1880 Kimball Ave. This program will be presented virtually by Dave Iverson in conjunction with Pig Out for Parkinson’s.

In 1971, Dave Iverson was 22-years-old when his dad was diagnosed with Parkinson’s. It was the beginning of a family story that would repeat itself when his older brother received the same news in the early 1990s and then in 2004, Dave was diagnosed, also.

Dave spent his career in broadcast journalism and made more than 20 documentary specials for PBS, including the 2009 Frontline film, *My Father My Brother and Me*, which documented his family’s journey with Parkinson’s.

A few years after Dave was diagnosed, he made another decision that changed his life -- he moved back into his childhood home to care for his 95-year-old mother. Dave’s new memoir, *Winter Stars: An Elderly Mother, An Aging Son and Life’s Final Journey*, is the story of their 10-year caregiving odyssey. Dave will offer an intimate, unvarnished account of his family journey with Parkinson’s and the challenges, choices and unexpected rewards of caring for someone during life’s final journey. No registration is required to attend.

Grow Green Match Day

Friday, April 21

The 11th annual Grow Green Match Day on Friday, April 21, is a tremendous opportunity for the Manhattan community and Meadowlark Foundation. On that day, donations made through the Greater Manhattan Community Foundation to participating nonprofit agencies will receive a 50% match!

How to participate in Grow Green Match Day:

1. Give in person from 7 a.m. to 6 p.m. at the

EVENTS & OPPORTUNITIES

donation station in the atrium at Colony Square, 555 Poyntz Ave. Donations by cash, check, or credit card will be accepted.

2. Visit <https://www.growgreenmanhattan.com/> to give online from 12 a.m. through 11:59 p.m. on Friday, April 21.

3. Write a check to Greater Manhattan Community Foundation.

~ If Meadowlark Foundation is the only beneficiary of your gift, you may write "Grow Green-Meadowlark" on the memo line.

~ Complete the giving form, which can be picked up at the Hospitality Desk, indicating the beneficiary/beneficiaries of your gift.

(Meadowlark Hills is listed in the Basic Human Needs & Healthcare category.) Even if giving to more than one organization, write only one check for the total amount. The form you submit will indicate to GMCF how you'd like your gift divided.

~ No matter the day a check is written, date it 4/21/2023 and mail it and the giving form on or before 4/21/2023. **Checks must be dated 4/21/2023 and postmarked on or before April 21 to be included in the 2023 Match Day total.**

~ Mail the check and giving form to GMCF, P.O. Box 1127, Manhattan, KS, 66505-1127

~ Meadowlark residents and Passport members may submit donations and donation forms to be delivered by Meadowlark Foundation in a bundle to GMCF. If you have a check and form to submit, please deliver to the Hospitality Desk by noon on Thursday, April 20.

4. Donate by donor-advised fund, grain, or by

stock. For details, visit growgreenmanhattan.com or contact Becky Fitzgerald. Gifts of grain or stock must be initiated by Friday, April 14.

How To Avoid "Bites" From "Biting Bugs" Friday, April 21, at 7 p.m.

Meadowlark is pleased to welcome Dr. Raymond A. Cloyd at 7 p.m. Friday, April 21, to the Event Center for his presentation of "How to Avoid Bites from *Biting Bugs*."

Cloyd is the extension specialist in horticultural entomology for the state of Kansas with a major clientele that includes homeowners, master gardeners, and professional and commercial operators. His research and extension programs involve pest management/plant protection in greenhouses, nurseries, landscapes, turfgrass, conservatories, interiorscapes, Christmas trees, and vegetables and fruits. All are welcome.

Sound of Music

Sunday, April 23, at 2:30 p.m.

Meadowlark will be taking a group to see the Sound of Music, presented by the Manhattan Arts Center Theater, at 2:30 p.m. Sunday, April 23. This will be a wonderful show, with music by Richard Rodgers, lyrics by Oscar Hammerstein II, book by Howard Lindsay and Russel Crouse and directed by Penny Cullers. The show features Andrew Smith, Sara Slightom, Linda Uthoff, Harrison Thomas, Patrick Dittamo, Laurie Davis, Alicia Santee-Davis, Taylor Richards, Jack Lutynski, and

See EVENTS, page 8

LEADER OF THE PACK

Meadowlark's Leader of the Pack for April is Julia Booher, a CNA in Collins House at Meadowlark! Julia consistently shows up on time and ready to work. She moves at a fast pace for her entire shift. Julia cares tremendously for the residents and their families. Nurse leaders in Collins House appreciate Julia's ability to support their duties making them more manageable, especially on busy nights. Meadowlark has immense gratitude for Julia and all the wonderful caregivers who work with those who call our campus home.



GOERING, from page 1

The following statement appears on Goering's website:

"I grew up in a small Kansas town surrounded by miles and miles of farmland. My interaction with these vast and sparsely populated landscapes created a connection that is emotional as well as conceptual. My paintings are often a visual representation of that life-long connection with the land and the natural forces that shape it."

Her current work emphasizes layers of rich color and texture, both of which are exemplified by Goering's two paintings that will auctioned at Art Mingle. Notice the purple and blues that dot the landscape in "Mayfield Cottonwood," her live auction submission pictured at right.

"I love color and use exaggerated color to enhance the 'natural' color in a painting," she explained. "To me, it energizes the piece and adds vibrancy. I often see purples and blues in shadows, and I love the richness it can add to a painting."

Goering said her paintings rarely start in the studio. Rather, she scouts and gathers her subjects and return them to the studio as sketches, photographs, and memories, using her work to recreate the impressions she had while viewing them. Such was the case with the "Mayfield Cottonwood" and her contribution to the silent auction, "September Afternoon."

"Both paintings were initially inspired by a photo shoot with my dad in Colorado" she recalled. "We headed down the mountain one morning from my mom and dad's cabin to take pictures of land around the Arkansas River valley, where there's lots of ranch/farm land with beautiful views. 'September Afternoon' is basically straight from those images -- with some added color! 'Mayfield Cottonwood' started with a tree from this collection of images but ended up being woven with memories of a solitary cottonwood on a farm from my childhood."

In addition to SNW Gallery in Manhattan, Goering's work can be found at a gallery in Topeka and one in Kansas City, Mo. Since 2009, her paintings have been displayed in Kansas and in Kansas City galleries at numerous select group, solo, and featured exhibitions as well as at regional museums.

Page 6



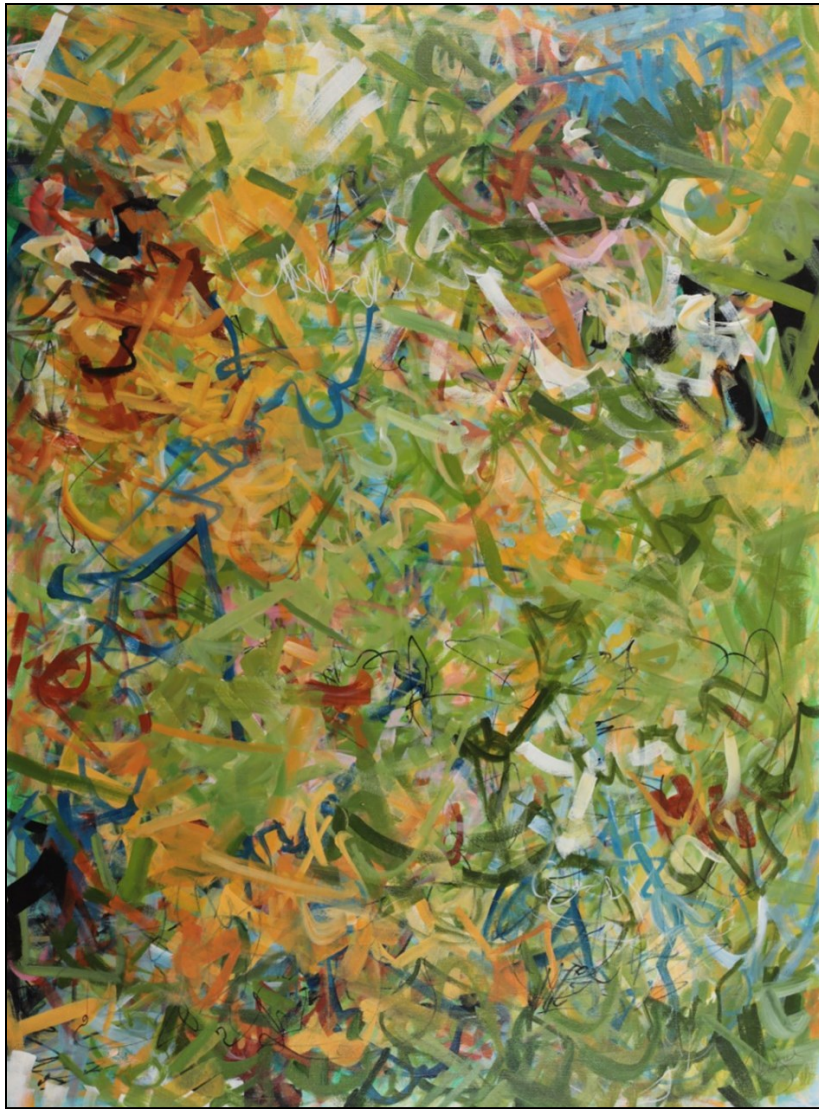
"Mayfield Cottonwood," 36 x 36, acrylic on canvas by Kristin Goering. Value: \$3,200.

Goering's paintings have been added to collections at American Royal, Arrowhead Stadium (home of the Kansas City Chiefs), and the University of Kansas School of Medicine, to name a few. In Manhattan, her work can be found at Kansas State University's Office of the President and at K-State's Alumni Center. At Meadowlark, "Summer Moon" by Goering hangs near the Manhattan Room at Prairie Star Restaurant, and "Electric Skies" hangs on 4th floor near the west elevators.

Goering said she is honored to be considered as a featured artist. She shared that she has a family connection to Meadowlark and that the fundraising goal of Art Mingle – supporting Meadowlark Memory Program – resonates with her.

"I think quality care later in life is so very important. My husband's grandfather did some rehabilitation at Meadowlark and also lived in the assisted living area for a while," she said. "I know he was always so happy with the people that cared for him. He felt very well taken care of and those individuals often made his day.

"Also, my husband's father has started to have memory issues, and I've witnessed how hard it's been for many reasons. Anything that can be done to help is, again, so important!"



“Nothin’ Like Friends,” 40 x 30, acrylic on canvas by Nancy Teague. Value: \$2,760.

TEAGUE, from page 1

spill over onto her canvas. According to her bio found at nancyteague.com, the shift was challenging, but exciting in newfound freedom to play, risk, learn, and explore.

“Growing in abstract expressionism brings challenge and delight,” she wrote. “What a call to risk, succeed, and fail! Fun delights are when I discover surprise happenings in the painting. They cause me to smile and marvel. I hope when you really look at my work, they make you happy and that you might even find surprises!”

Teague’s energetic strokes, colorful palette, spontaneity, playfulness, and contemplative ways bring depth and excitement to her work. Her paintings have been selected for national competitions, and they are found in corporate and private collections in the U.S., including Kansas

State University’s College of Business. At Meadowlark’s event venue, see “Exit to Adventure” near the Bison Room.

Teague said she doesn’t have the finish in mind when she starts a painting.

“When I begin a painting, a general palette is in mind, but often as the painting unfolds other colors enter in. My desire is to be in a place of spontaneity and openness to surprises. As the washes, strokes, marks, shapes, removals happen on the canvas, I experience a sense of excitement, or sometimes ask myself ‘Where is this going?’

“Colors can be mixed on my paint tray or mixed directly on the painting. Layers get built up, things peek through, lines move in and out,” she added. “As the painting is nearing completion, there will be intentional marks, shapes, or direction of movement that help strengthen the composition. Having fun is the foundation of my expressions.”

She said when painting “Nothin’ Like Friends,” her submission to the live auction, shown at left, there was a clear flow of energy in interaction and fun.

“I was surprised at and enjoyed the happy dynamics unfolding. After completion, the title popped into my head. Truly, friends bring such delight and depth to our lives.”

The bright colors she swishes and dabs onto her canvases are prompted by an encounter with internal joy that’s connected to true identity. “Lively movements and colorful connecting are certainly part of being in this beautiful world,” she said.

Teague said she is honored to have been selected as an Art Mingle featured artist, and she shares Goering’s interest in supporting Meadowlark Memory Program.

“Participating is particularly meaningful to me given my paternal grandmother and dad had dementia. To think I could help contribute in a creative way with Meadowlark’s care for those with Alzheimer’s is personally poignant,” she said. “I know my dad and grandma would be excited for me, from above!”

Purchase Art Mingle tickets and learn more about the event at www.meadowlark.org or call (785) 323-3847.

Work That Brain!

Level: Easy

		6	4				3	5
	1		2			6	9	
		2		9		4		
5	2	3	9	8				
	8						5	
6				1	4			
					6			
9	5							
			8				4	

Level: Medium

	8		1		2			3
6		5			4			
	2			7	3			
	7		8					6
	4			3	6			2
	1						7	
			5		7			8
		4		6	8			
		1		2			6	

EVENTS, from page 5

other local talent.

The cost for a ticket and transportation to the show is \$28 per person. The bus will depart from the Village Entrance at 1:50 p.m. Please sign up in the Blue Book at the Hospitality Desk.

PA Program Clinics

Thursday, April 27, from 1 to 5 p.m.

Meadowlark is again partnering with Kansas State University's Physician Assistant (PA) program to support students with their clinical skills. Twenty-five students enrolled in the PA Program will be at Meadowlark from 1 to 5 p.m. Thursday, April 27, to conduct individual physical exams/assessments as part of their curriculum. They are needing resident, Passport member, and/or employee volunteers who are willing to have a PA student conduct a 30 to 60 minute exam. During the "exam," students will obtain social history, medical history, medication listing, vitals, and range-of-movement. This experience will be similar to an exam received in a primary care office, but should not replace those appointments scheduled with your provider. This is an

educational opportunity for the students.

Sign up at the Hospitality Desk in the Blue Book if you are willing to participate. Participants will receive a free dessert in Prairie Star Restaurant. Please contact the Hospitality Desk at (785) 323-3847 if you have questions regarding the partnership. Exams will occur on Meadowlark's campus, and the exact room location is not finalized. Please check in at the Hospitality Desk at your scheduled time.

Little Apple Barbershop Chorus Concert

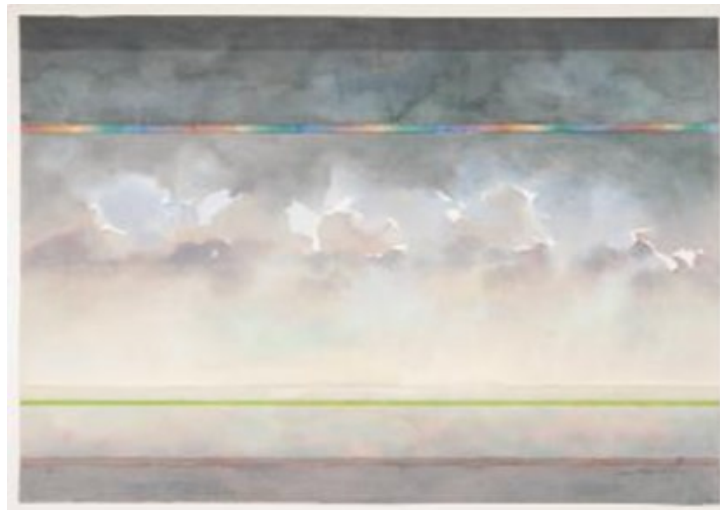
Saturday, May 6, at 3 p.m.

You're invited to attend Little Apple Chorus' Spring Show, "A Funny Thing Happened on the Way to the Forum Hall!" The program is scheduled for Saturday, May 6, at 3 p.m. in Forum Hall at the KSU Student Union. The show will feature Little Apple Barbershop Chorus, Heartland Harmony, and The Newfangled Four. The doors will open at 2:30 p.m.

Meadowlark has complimentary tickets still available! These will be distributed on a first-come-first-served basis. Please visit the Hospitality Desk to claim a concert ticket.

Art Engagement *from the Beach Museum of Art*

Pick three ... If you were going to hang three of these artworks together which three would you choose? You may want to consider the elements of art (line, shape, color, value, form, texture, or space) to help you make your decision. After you choose the first three, pick another set of three.



[top, left] Bernard Joseph Steffen, *Rain Shower*, ca. 1970, Oil on canvas
KSU, Marianna Kistler Beach Museum of Art, gift of John, Susan, and Johnny Watt, in memory of Sarah Kathrine Watt, 2021.23

[top, right] Joan Foth, *Rain, September 1975*, Watercolor on paper, KSU, Marianna Kistler Beach Museum of Art, gift of Don Lambert and Diann Spencer, 2021.5

[middle, left] Roy Clinton Langford, *Title Unknown*, ca. 1955, Watercolor with graphite on paper, KSU, Marianna Kistler Beach Museum of Art, The Roy C. Langford Collection, gift of the Langford family, 2008.383

[middle, right] Oscar Vance Larmer, *Title Unknown*, 1973, Acrylic on untreated canvas
KSU, Marianna Kistler Beach Museum of Art, gift of the artist, 2019.257

[bottom, left] Vernon Brejcha, *Ominous Cloud*, 1985, Blown glass with sand blasting, KSU, Marianna Kistler Beach Museum of Art, gift of Scott Vance and Sharon Kootz Vance, 2005.446

RESTAURANT **SPECIALS**

<p>Sunday, April 16</p>	<p>Sunday Brunch Brunch Menu available from 9 a.m. to 2 p.m.</p>	<p>Dinner \$12 Philly Cheesesteak Sandwich French Fries</p>
<p>Monday, April 17</p>	<p>\$11 Lunch Bacon, Spinach, & Swiss Quiche Rice Pilaf Fresh Fruit</p>	<p>\$12 Dinner Pasta Bar</p>
<p>Tuesday, April 18</p>	<p>\$11 Lunch Caesar Steak Wrap Garlic-Parmesan Fries</p>	<p>\$13 Dinner Spaghetti & Meatballs Garlic Toast Green Beans</p>
<p>Wednesday, April 19</p>	<p>\$10 Lunch Chicken Fajita Quesadilla Corn Salad</p>	<p>\$14 Dinner Chicken Madeira Wild Rice Broiled Tomato</p>
<p>Thursday, April 20</p>	<p>\$11 Lunch Pesto Chicken Melt Garden Vegetable Soup</p>	<p>\$17 Dinner Tuscan Shrimp Ravioli Garden Salad</p>
<p>Friday, April 21</p>	<p>\$11 Lunch Soup & Salad Bar</p>	<p>\$18 Dinner Parmesan-Crusted Salmon Wild Rice Asparagus</p>
<p>Saturday, April 22</p>	<p>\$11 Lunch Fried Pork Cutlet Sandwich Roasted Red Potatoes</p>	<p>\$19 Dinner 6 oz. Ribeye Baked Potato Asparagus</p>

Weekly Opportunities Calendar April 16 to April 22

Sunday • April 16 *Put your trash at the curb!*

10:30 a.m. ~ Worship Service, CR
10:30 a.m. ~ Transportation to FUMC, VE

Monday • April 17 *Trash & recycling pick-up*

9:30 a.m. ~ Seated Strength, CR *or 1960*
10:00 a.m. ~ Tuttle Creek Ladies Group, BR
10:00 p.m. ~ Tuttle Creek Mens Group, MR
10:30 a.m. ~ Weights 101, CR *or 1960*
11:30 a.m. ~ Sit & Be Fit, CR *or 1960*
1:00 p.m. ~ Parkinson's Exercise Class, CR *or 1960*
1:30 p.m. ~ God Talk, KSU CL
1:45 p.m. ~ Parkinson's Voice Class, CR
2:00 p.m. ~ Change & Loss Support Group, FHR
5:00 p.m. ~ Manhattan Catbackers, CY
5:30 p.m. ~ 5th Floor Supper, MR
7:00 p.m. ~ Community Bingo, CR

Tuesday • April 18

7:00 a.m. ~ Rock Steady Boxing, BF
10:00 a.m. ~ Memory Activities Class, KSU CL
9:45 a.m. ~ UFM Class: More Steel than Wheels, depart from VE
10:30 a.m. ~ Steady Yourself, CR *or 1960*
11:15 a.m. ~ Chair Yoga, CR *or 1960*
12:05 p.m. ~ Mat Yoga, CR
1:00 p.m. ~ Fit 2 Fight Pd, MSC
2:00 p.m. ~ 10-Point Pitch, GR
2:00 p.m. ~ Prairie Star Writers, PR
4:00 p.m. ~ Meadowlark Singers Practice, CR

Wednesday • April 19

9:30 a.m. ~ FUMC Communion, BR
9:30 a.m. ~ Seated Strength, CR *or 1960*
10:00 a.m. ~ Walmart/Dillons Shopping Trip, VE
10:00 a.m. ~ Mem. Care Partners Supp. Grp, FHR
10:00 a.m. ~ Memory Café, KSU CL
10:30 a.m. ~ Weights 101, CR *or 1960*
11:30 p.m. ~ Page Turners Book Club, PR
11:30 a.m. ~ Sit & Be Fit, CR *or 1960*
2:00 p.m. ~ Don't Get Scammed, BR
3:00 p.m. ~ Sing-A-Long, EC
4:00 p.m. ~ Rock Steady Boxing, BF
4:00 p.m. ~ Artist Discussion with the Beach, BR

Thursday • April 20

9:00 a.m. ~ Technology Help Drop-In, FHR
9:00 a.m. ~ Messenger Team, KSU CL
10:30 a.m. ~ Steady Yourself, CR *or 1960*

Thursday • April 20

11 a.m. to 10 p.m. ~ Pig Out for Parkinson's, Rockin K's, 1880 Kimball Avenue
11:15 a.m. ~ Chair Yoga, CR *or 1960*
12:05 p.m. ~ Mat Yoga, CR
1:00 p.m. ~ Parkinson's Exercise Class, CR
2:30 p.m. ~ Card Making w/ Michelle Lehmer, FHR
5:30 p.m. ~ Meadowlark Circle Dinner, MR

Friday • April 21

Grow Green Match Day!
9:30 a.m. ~ Seated Strength, CR *or 1960*
10 a.m. to 3 p.m. ~ Meadowlark Market, 120 Scenic
10:30 a.m. ~ Weights 101, CR *or 1960*
11:30 a.m. ~ Sit & Be Fit, CR *or 1960*
11:30 a.m. ~ UFM: Religions of Southeast Asia, EC
1:00 p.m. ~ Rock Steady Boxing, BF
1:00 p.m. ~ Parkinson's Exercise Class, 1960
2:30 p.m. ~ Meadowlark Volunteer Social, CY
7:00 p.m. ~ Avoiding Bites from Biting Bugs, EC

Saturday • April 22

9:30 p.m., Band Bust Exercise Class, 1960
10 a.m. to 3 p.m. ~ Meadowlark Market, 120 Scenic

Room Abbreviations

1960, TV Channel 1960	GR, Game Room
BF, Body First	KSU CL, KSU Classroom
BR, Bison Room	MR, Manhattan Room
CR, Community Room	PR, Patriot Room
CY, Courtyard	PS, Prairie Star Restaurant
EC, Event Center	MSC, Manhattan Sr. Center
FHR, Flint Hills Room	VBC, Verna Belle's Cafe
GC, Grosh Cinema	VE, Village Entrance

Gifts to Meadowlark Foundation

Gifts benefiting the Good Samaritan Fund, Helping Hands Fund, Meadowlark Memory Program, Meadowlark Parkinson's Program, Tinklin Pointe, and Wroten House were received by Meadowlark Foundation during the month of March.

Memory of

Angie Fryer	Charles "Chuck" Munson
Janet Groninga	Alan Svoboda
Evelyn Lady	John K. "Jack" Vanier

Contact Becky Fitzgerald at (785) 323-3843 to learn more about Meadowlark Foundation.



GROSH CINEMA SHOWTIMES

MONDAY TO SATURDAY 1:00 P.M. / 4:00 P.M. / 7:00 P.M.
SUNDAY 2:00 P.M. / 6:00 P.M.

SEASONAL SUNDAY: April 16

EAT PRAY LOVE (2010) PG-13, 2 hr. 20 min. *Sentimental, Romantic, Drama*

Cast: Julie Roberts, James Franco, & Javier Bardem

After deciding to reshape her life after divorce, Liz travels around the world in search of good food, spirituality, and true love.

MUSICAL MONDAY: April 17

SINGIN' IN THE RAIN (1952) G, 1 hr. 43 min. *Feel-Good, Romantic, Musical*

Cast: Gene Kelly, Donald O'Connor, & Debbie Reynolds

When Hollywood attempts to transition from silent films to talkies, a matinee idol hopes to make the cut. But he's hampered by a silent-movie queen with a voice like fingernails on a blackboard.

TRUE TUESDAY: April 18

THE MARTHA MITCHELL EFFECT (2022) PG, 40 min. *Provocative, Cerebral, Documentary*

This documentary profiles the Cabinet wife who spoke out during Watergate—and the Nixon administration's campaign to gaslight her into silence.

WESTERN WEDNESDAY: April 19 **SHOWTIMES: 1 P.M. & 6 P.M.** **RESIDENT REQUEST**

GONE WITH THE WIND (1939) G, 3 hr. 53 min. *Classic, Romance, Drama*

Cast: Clark Gable, Vivien Leigh, & Leslie Howard

A manipulative woman and a roguish man conduct a turbulent romance during the Civil War and Reconstruction periods.

THEATER THURSDAY: April 20

HEROES (1977) PG, 1 hr. 52 min. *Romantic, Military, Drama*

Cast: Henry Winkler, Sally Field, & Harrison Ford

On a cross-country bus trip, a troubled Vietnam vet bonds with a young woman looking to find herself.

FUNNY FRIDAY: April 21

WE HAVE A GHOST (2023) PG-13, 2 hr. 7 min. *Heartfelt, Goofy, & Exciting*

Cast: David Harbour, Anthony Mackie, & Jahi De'Allo Winston

After finding a ghost with a murky past haunting their new house, a family becomes internet sensations—and the targets of a shadowy government agency.

SWEET SATURDAY: April 22

ENDLESS LOVE (2014) PG-13, 1 hr. 44 min. *Bittersweet, Emotional, Romantic*

Cast: Alex Pettyfer, Gabriella Wilde, & Bruce Greenwood

In this remake of the 1981 cult classic, the incendiary first love affair between two teens grows obsessive when their parents try to separate them.