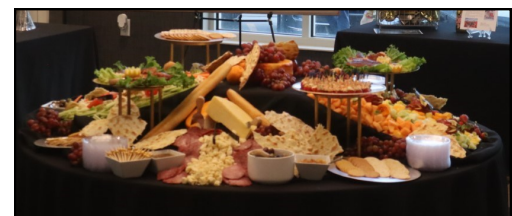


# Wonder & Whimsy

*Art Mingle fundraiser benefits memory program*



[above left] Colton and Samantha Jones of Tandem Moons will play at the 2023 Art Mingle event.

[top right] ARTful Making display featuring pieces created by Meadowlark Memory Program participants.

[bottom right] Art Mingle famously features delicious food stations to treat attendees throughout the evening.

*by Becky Fitzgerald, Development Director*

After a hiatus in 2022, Meadowlark Foundation's art-related fundraiser returns this spring. Mark your calendars for Friday, April 28! Meadowlark staff have joined with several Manhattan community members to present **Art Mingle: Wonder & Whimsy**, which benefits the Meadowlark Memory Program. The fun begins at 6 p.m. at Prairie Star Restaurant and Event Venue.

Guests are invited to mingle with friends amid the colorful and varied artwork at Prairie Star. Fabulous food, lively libations, toe-taping tunes, and art appreciation also are part of the plan for this 5<sup>th</sup> celebration. Most all areas of the restaurant and event space will be utilized for food and/or beverage stations, art exhibits, and displays of silent and live auction items.

This year's theme is a nod to our two featured artists: Kristin Goering of Fairway, Kan., and Nancy Teague of Lincoln, Neb. Goering's landscapes and Teague's abstract expressionism are a contrast of styles, but their shared use of energetic brushstrokes and dynamic color palettes convey thoughts of wonder and whimsy. Seeing their work, we may *wonder* about the visual elements or stirred emotions that prompted their paintings, and we may be reminded that a life with *whimsy* can be rich and exciting.

Minglers won't want to miss the Artist Showcases, featuring Goering and Teague. These two women, sought-after members of the regional art scene, will be greeting fans and making new friends while surrounded by examples of their work. A rural Kansas

See MINGLE, page 5

## EVENTS & OPPORTUNITIES

### **Easter Sunday evening meal**

Prairie Star Restaurant will be closed for dinner on Sunday, April 9. Residents are invited to sign up to receive a boxed dinner. The meal will include a club sandwich, chips, fruit, and a cookie for \$13 each. Meals will be delivered between 2:30 and 3:30 p.m. at no additional charge. Register by visiting the host stand in Prairie Star Restaurant.

### **In-A-Chord: A Cappella Concert**

*Friday, March 31, at 7 p.m.*

Meadowlark is excited to welcome In-A-Chord, the premiere auditioned a cappella group from K-State. The group will perform for us at 7 p.m. Friday, March 31, in the Event Center.

In-A-Chord performs a wide variety of pop and contemporary music. Don't miss this entertaining show, which is part of the Bell Family Foundation Music Series.

### **Special Palm Sunday Worship**

*Sunday, April 2, at 10:30 a.m.*

Join Pastor Melanie and Pianist Ethan Xin for a one-of-a-kind Palm Sunday Worship Service at 10:30 a.m. Sunday, April 2, in the Community Room/Chapel. There will be a laying of cloaks, palm processional, and a meaningful message as we start the emotional journey of Holy Week. We will try to imagine what it felt like to be in the procession during Jesus' time shouting "Hosanna" and believing Christ is King as an ancient witness.

***There are special opportunities for children this Sunday, so if you have children in your family or friend group*** they are welcome to participate! Have them arrive by 10:20 a.m. to be a part of the fun palm processional portion of the service. The palms for Sunday's service are generously donated by Kappa Kappa Gamma sorority.

### **Celebration of Life: Olivia P. Collins**

*Sunday, April 2, at 4 p.m.*

Olivia P. Collins died Tuesday, Dec. 13, 2022, at the age of 76 in her home of Meadowlark Hills in Manhattan, Kan.

Honoring Olivia's expressed wishes, there is no funeral service. Rather, we will celebrate her life, as she celebrated her friends and loved ones –

with coffee and connection, a raised glass, music and dancing – on Sunday, April 2, from 4 to 8 p.m., at the K-State Alumni Center, 1720 Anderson Avenue, Manhattan, Kansas. All are invited.

### **Town Meeting**

*Monday, April 3, at 9:30 a.m.*

You're invited to attend the monthly Town Meeting at 9:30 a.m. Monday, April 3, in the Event Center. Hear updates from Lonnie Baker, CEO, and other Meadowlark leaders about the upcoming events and news for our campus.

If you are unable to attend Town Meeting, printed agendas will be available at the Hospitality Desk after the meeting concludes.

### **Prairie Star Writers Group**

*Tuesday, April 4, at 2 p.m.*

Interested in joining the writing group at Meadowlark? Prairie Star Writers invites you to attend the next meeting at 2 p.m. Tuesday, April 4, in the Patriot Room.

The April 4 session is titled "Thank you, My Friend—You Keep Me Going!" Let's take some time to think of those who were important in keeping our spirits up, reviving our energy, and reminding us how good it is to be alive during the last few tough years. Writers is led by Cathy Hedge. The group meets on the first and third Tuesdays.

### **Page Turners Book Club**

*Wednesday, April 5, at 11:30 a.m.*

Page Turners Book Club attendees and facilitators had some great discussion, learned about North Carolina marshland and its history, and ate some delicious hushpuppies in our last few meetings. Thank you to all who were able to attend.

To keep the Page Turners Book Club all on the same *page*, here is the plan for moving forward. The group is open to any and all who would like to participate. One does not have to attend each week, and please come when you are able. Our next meeting is at 11:30 a.m. Wednesday, April 5, in the Patriot Room. Please bring a couple of book recommendations that you feel would make for a good group discussion. After sharing with the group, we will review our options and settle on a book for our next endeavor. Happy reading!

## EVENTS & OPPORTUNITIES

### **Meadowlark Men's Social Supper**

**Wednesday, April 5, at 5:30 p.m.**

Prairie Star Restaurant invites the Meadowlark men to attend a Social Supper at 5:30 p.m. Wednesday, April 5, in the Manhattan Room. Dinner can be purchased from the Prairie Star menu or enjoy the daily special. Registration is not required, but please check in at the host stand when arriving. This is a casual dining opportunity, and it will not feature a program.

### **Pd Education Group**

**Thursday, April 6, at 2 p.m.**

You're invited to the monthly meeting of the Pd Education Group at 2 p.m. Thursday, April 6, in the Community Room.

This month's program is titled, "Swallowing Changes and Difficulties: Is it Parkinson's?" presented by K-State Speech-Language Pathology graduate students. As we continue the series of educational topics focusing on symptoms that people may not know can accompany Parkinson's, the students will present about the warning signs and symptoms, how swallowing is assessed, and how to manage challenges. No registration is required to attend. If you have questions, please call Michelle at (785) 323-3899.

### **UFM Class: Religions of Southeast Asia**

**Friday, April 7, at 11:30 a.m.**

UFM Lifetime Learning presents *Religions of Southeast Asia* taught by Dr. Michael Wesch, a professor of anthropology at K-State. This three-session course will begin Friday, April 7, at 11:30 a.m. in the Community Room. The second and third sessions will meet April 14 and April 21.

In this class, we will explore the religions of Southeast Asia as they are actually lived and experienced by people in Thailand and Vietnam. We will explore Buddhism, Taoism, Confucianism, and Cao Dai. Cao Dai is a religion that blends all of these together with Christianity. Dr. Wesch has been doing research with Cao Dai for more than two years and will share photos and videos from his experiences there.

Enrollment is now open for *Religions of Southeast Asia*, and can be completed by calling (785) 539-8763. This class is offered through UFM at no charge to Meadowlark residents, and

Passport members may attend with a 20-percent discount. Reminder: Meadowlark does not have a partnership agreement with Osher Lifetime Learning; therefore, Osher classes are not available at a discount to Meadowlark affiliates.

### **Good Friday Worship Service**

**Friday, April 7, at 7 p.m.**

Some say that there is no way to experience Easter joy without first going through Good Friday grief. You will have the opportunity to participate in a traditional observance of the crucifixion of Christ through worship at 7 p.m. Friday, April 7, in the Community Room/Chapel.

Join Rev. Melanie Nord for song, extinguishing of candles, and a homily focusing on John 19 and the death of Christ according to this Johannine Gospel writer. We will be blessed by guest musician Dr. Kerry Priest, who is a Full Professor at Kansas State University at the Staley School of Leadership and a member of the Manhattan First Congregational United Church of Christ.

### **Ladies Luncheon**

**Thursday, April 13, at 11:30 a.m.**

Harriette Janke and Peg Ziser invite all Meadowlark and Passport ladies to attend the April Ladies Luncheon at 11:30 a.m. Thursday, April 13, in the Event Center.

During the April luncheon, we will share about heirloom quilts. Identify your favorite family heirloom quilt and prepare a one-minute history of the quilt to share with the group. Alternatively, you are invited to write a short paragraph about your family quilt for Harriette or Peg to read to the attendees. Bring your quilt and place it on the display table at 11 a.m. the day of the luncheon.

If you have a small item of sewn or stitched handiwork, such as needlepoint, crochet, or knitting, which would be suitable as a centerpiece, please bring it when you deliver your quilt.

The luncheon will feature a chicken and mushroom crepe, vegetable medley, rolls with butter, raspberry sherbet, and a sugar cookie. Cost is \$11 per person.

Please sign up in the Blue Book at the Hospitality Desk, if you plan to attend, by Monday, April 10.

See **EVENTS**, page 4

## EVENTS, from page 3

### Pig Out for Parkinson's

*Thursday, April 20, from 11 a.m. to 10 p.m.*

Mark your calendar for the 13<sup>th</sup> annual Pig Out for Parkinson's! Pig Out is set for Thursday, April 20, at Rockin K's restaurant. The event, presented by CenterPointe Physicians, features food specials, music from DJ Dan, and appearances by K-State celebrities, including former K-State Football Coach Bill Snyder. There also will be opportunities to learn about Meadowlark Parkinson's Program resources and treatment for Parkinson's disease (Pd) from team members and vendors.

Pig Out for Parkinson's happens every April in conjunction with Parkinson's Disease Awareness Month. The goal of the event is to educate the community about Pd and opportunities offered by Meadowlark Parkinson's Program. All the activities offered by the program are free of charge thanks to the generosity of program participants, local businesses, and community members. Attending Pig Out for Parkinson's is one opportunity to show support, as 10 percent of Rockin K's sales for the day benefit Meadowlark Parkinson's Program. In addition to eating in person, residents are welcome to place to-go orders by completing forms that will be available with a future edition of the Messenger or at the Hospitality desk.

Please contact Michelle Haub at [mhaub@meadowlark.org](mailto:mhaub@meadowlark.org) or (785) 323-3899 to learn more.

### Grow Green Match Day

*Friday, April 21*

The 11th annual Grow Green Match Day on Friday, April 21, is a tremendous opportunity for the Manhattan community and Meadowlark Foundation. On that day, donations made through the Greater Manhattan Community Foundation to participating nonprofit agencies will receive a 50% match!

Meadowlark Foundation is joining 92 other local organizations in urging our donors to participate. Gifts to Meadowlark Foundation, which appears as Meadowlark Hills on the Grow Green giving form and on GMCF's website, will support scholarships for current Meadowlark employees who would like to further their education to

become licensed practical nurses or registered nurses.

Now in its fifth year, Meadowlark's scholarship program rewards the initiative of talented current employees, while, in the future, providing Meadowlark's licensed care households with highly trained staff in what appears to be a perpetual nurses shortage. Employees who receive a scholarship agree to work at Meadowlark for at least two years following graduation.

#### **How you may help attract and retain nurses:**

1. Give in person from 7 a.m. to 6 p.m. at the donation station in the atrium at Colony Square, 555 Poyntz Ave. Donations by cash, check, or credit card will be accepted. Each hour, one donor name from the live event will be drawn to win \$100 for the participating fund of his or her choice.

2. Visit <https://www.growgreenmanhattan.com/> to give online from 12 a.m. through 11:59 p.m. on Friday, April 21.

3. Write a check to Greater Manhattan Community Foundation.

~ If Meadowlark Foundation is the only beneficiary of your gift, you may write "Grow Green-Meadowlark" on the memo line.

~ Complete the giving form included with the April 6 Messenger, indicating the beneficiary/beneficiaries of your gift. (Meadowlark Hills is listed in the Basic Human Needs & Healthcare category.) Even if giving to more than one organization, write only one check for the total amount. The form you submit will indicate to GMCF how you'd like your gift divided.

~ No matter the day a check is written, date it 4/21/2023 and mail it and the giving form on or before 4/21/2023. **Checks must be dated 4/21/2023 and postmarked on or before April 21 to be included in the 2023 Match Day total.**

~ Mail the check and giving form to GMCF, P.O. Box 1127, Manhattan, KS, 66505-1127

~ Meadowlark residents and Passport members may submit donations and donation forms to be delivered by Meadowlark Foundation in a bundle to GMCF. If you have a check and form to submit, please deliver to the Hospitality Desk by noon on Thursday, April 20.

4. Donate by donor-advised fund, grant, or by stock. For details, visit [growgreenmanhattan.com](http://growgreenmanhattan.com)

or contact Becky Fitzgerald. Gifts of grain or stock must be initiated by Friday, April 14.

### **Trip to Royals Game**

**Friday, May 5, at 3 p.m.**

Residents, staff, and family members are invited to Kansas City's Kaufman Stadium to watch the 2023 Royals. This year's trip is scheduled for Friday, May 5. The game will start at 7:10 p.m. against the Oakland Athletics. The cost of the trip is \$65, which includes a ticket to the game, transportation on a chartered bus, a variety of snacks to enjoy on the way to the game, and a boxed meal. Travelers are responsible for their own food and beverages during the game.

The bus will depart from the visitor parking area in front of the Event Center at 3:30 p.m. Please arrive by 3 p.m. Registration for this event is open, and a sign-up sheet is in the Blue Book located at

the Hospitality Desk. The cost can be paid by card, cash, payroll deducted for employees, or applied to residents' statement. **Please sign up to attend by Saturday, April 1.** Go Royals!

### **Little Apple Barbershop Chorus Concert**

**Saturday, May 6, at 3 p.m.**

You're invited to attend Little Apple Chorus' Spring Show, "A Funny Thing Happened on the Way to the Forum Hall!" The program is scheduled for Saturday, May 6, at 3 p.m. in Forum Hall at the KSU Student Union. The show will feature Little Apple Barbershop Chorus, Heartland Harmony, and The Newfangled Four. The doors will open at 2:30 p.m.

Meadowlark has 16 complimentary tickets still available! These will be distributed on a first-come-first-served basis. Please visit the Hospitality Desk to claim a concert ticket.

### **MINGLE, from page 1**

native, Goering graduated with a fine arts degree from Bethel College in 1992. Her early career was spent as a freelance artist and illustrator with the Mennonite Press and Hearth Publishing in Newton Kan. Teague graduated from the University of Nebraska with a bachelor's in education, then subsequently taught three years in the Lincoln public schools before beginning her art career that has spanned four decades.

Party-goers at previous Art Mingle events raved about the array of eye-catching and tasty hors d'oeuvres, and Meadowlark chef John Gasser promises more palate-pleasing offerings. Two specialty cocktails, one called Wonder, the other Whimsy, will be added to the beverage selections, and live music will be provided by Colton and Samantha Jones, who play and sing as Tandem Moons.

Art Mingle 2023 offers silent and live auctions, featuring original art from our Showcase guests and other well-known artists, as well as jewelry, wine and spirits, experiences, and much more. Leaning into the Wonder portion of the theme, one of the live auction packages and the raffle prize feature an element of mystery. See photos of auction items and the raffle prize soon on the Art Mingle events page at [www.meadowlark.org](http://www.meadowlark.org).

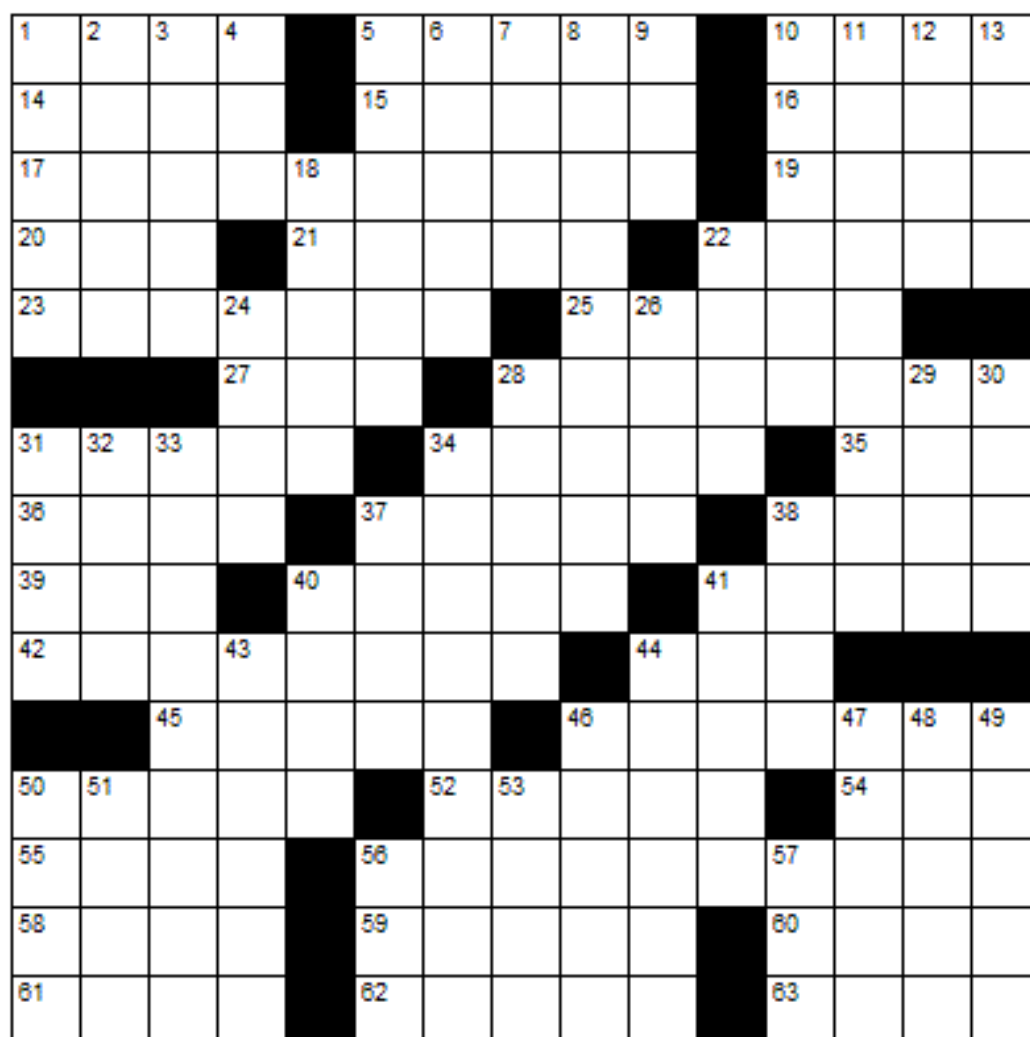
Keeping the event's worthy cause in mind, guests are invited to visit the Manhattan Room to view an exhibit of paintings created by memory program participants.

Tickets to Mingle are now available at \$75 each. In addition to all-you-can-enjoy food and beverages, attendees receive a thank you gift. Cocktail or business casual attire suggested; lean into the theme, if you like, by wearing something colorful and/or whimsical. Purchase tickets by contacting a Hospitality team member at (785) 323-3847, or purchase online at [www.meadowlark.org](http://www.meadowlark.org).

Community First National Bank again is the event's presenting sponsor. Steel & Pipe Supply and WTC are the Artist Showcases and Dine & Drink sponsors, respectively. We also gratefully acknowledge the support of SNW Gallery & Custom Frames.

Questions about the event? Please contact Becky Fitzgerald, Development Director, at (785) 323-3843. As indicated, proceeds from Art Mingle benefit Meadowlark Memory Program, now in its seventh year. The program provides FREE education and enrichment opportunities for persons affected by memory or cognitive changes and their care partners. Program services are open to anyone in the Flint Hills region.

# Work That Brain!



## ACROSS

1. Detective's assignment
5. Old Jewish scholars
10. Not first
14. Component of steel
15. A type of writing tablet
16. Slave
17. Amateurish
19. Detect
20. East southeast
21. Row of shrubs
22. Utilization
23. Inhale and exhale
25. Child
27. Hotel
28. Ran very fast
31. Not tense or taut
34. Paved outdoor area
35. Earlier
36. Heads
37. Specified days of the month
38. Dirty air
39. Big fuss
40. Ate
41. Confer happiness on
42. Perseveres
44. Twosome
45. Fidgety
46. Rich dessert
50. Debate
52. Blood pump
54. Enemy
55. Motel employee
56. Ownership
58. Short skirt
59. Donkeys
60. Formerly (archaic)
61. Margarine
62. Requires
63. Dampens

## DOWN

- |                                |                             |                               |
|--------------------------------|-----------------------------|-------------------------------|
| 1. Apple-based alcoholic drink | 18. Reason                  | 40. Cubes                     |
| 2. Come up                     | 22. Freshwater mussel       | 41. Failures                  |
| 3. Undersides                  | 24. Photos                  | 43. Artist's workroom         |
| 4. East northeast              | 26. Colored part of the eye | 44. Coercion                  |
| 5. Towards the rear            | 28. Satisfies               | 46. Enclosed                  |
| 6. Sword                       | 29. Freudian topics         | 47. Ardent                    |
| 7. Pow!                        | 30. Canines                 | 48. Settle down for the night |
| 8. Tried                       | 31. Break in two            | 49. Dings                     |
| 9. Observe                     | 32. Prospector's find       | 50. Ammunition                |
| 10. Textbook division          | 33. Native                  | 51. Train track               |
| 11. Sugar substitute           | 34. Stockings               | 53. Being                     |
| 12. Kiss and cuddle            | 37. Plate                   | 56. Greek god of flocks       |
| 13. French for "Head"          | 38. Coin opening            | 57. Stitch                    |

## **Art Engagement** *from the Beach Museum of Art*

**Lines** can communicate information with their direction. Horizontal lines can separate layers in a landscape and suggest expansiveness, while vertical lines communicate height. Curved lines give a sense of energy. Diagonal lines express movement and are often used to create depth through perspective by drawing the viewer's eye to a converging point. As you observe the use of lines in the print shown here, do you notice a convergence of lines to create depth? How do the horizontal and vertical lines intersect? What angles do they create? Do you find a focal point? If yes, how does the artist use line to draw your eyes to that spot? Is there a vertical line creating height in this image, or is something else drawing the eye upward?



**Robert James Hunt (United States, 1921 - 1996)**

*Grant Park Memories, 1979*

Charcoal on paper

KSU, Marianna Kistler Beach Museum of Art, gift of the Jim Hunt Estate and the Mulvane Art Museum

1997.82

# RESTAURANT **SPECIALS**

<p><b>Sunday, April 2</b></p>	<p><b>Sunday Brunch</b> Brunch Menu available from 9 a.m. to 2 p.m.</p>	<p><b>Dinner</b> <b>\$14</b> BBQ Meatballs Scalloped Potatoes Roasted Broccoli</p>
<p><b>Monday, April 3</b></p>	<p><b>\$11</b> <b>Lunch</b> Chicken Gyro Pasta Salad</p>	<p><b>\$14</b> <b>Dinner</b> Smothered Pork Chop <i>with Mushroom-Onion Gravy</i> Mashed Potatoes Honey Carrots</p>
<p><b>Tuesday, April 4</b></p>	<p><b>\$11</b> <b>Lunch</b> Honey-Dijon Chicken Sandwich Sweet Potato Fries</p>	<p><b>\$15</b> <b>Dinner</b> Beef &amp; Italian Sausage Lasagna Garlic Bread Caesar Salad</p>
<p><b>Wednesday, April 5</b></p>	<p><b>\$11</b> <b>Lunch</b> Meatloaf Sandwich Pub Chips</p>	<p><b>\$15</b> <b>Dinner</b> Chicken Cordon Bleu Rice Pilaf Roasted Broccoli</p>
<p><b>Thursday, April 6</b></p>	<p><b>\$9</b> <b>Lunch</b> Hot Ham &amp; Cheese Tomato Soup</p>	<p><b>\$16</b> <b>Dinner</b> Penne with Sherry Garlic Sauce <i>chicken, shrimp, mushrooms, spinach, &amp; sundried tomatoes</i> Garlic Bread</p>
<p><b>Friday, April 7</b></p>	<p><b>\$11</b> <b>Lunch</b> Potato Bar</p>	<p><b>\$17</b> <b>Dinner</b> Braised Short Ribs Loaded Mashed Potatoes Fresh Green Beans</p>
<p><b>Saturday, April 8</b></p>	<p><b>\$11</b> <b>Lunch</b> Garlic-Parmesan Boneless Wings French Fries</p>	<p><b>\$14</b> <b>Dinner</b> BBQ Brisket Loaded Mashed Potatoes Asparagus</p>



# BREAKFAST MENU

*Breakfast service, featuring specials and a regular menus, available in Prairie Star Restaurant from 7 to 11 a.m.*

## Daily Specials

Monday

Biscuits & Gravy

\$2.50 / \$4.50

Tuesday

Breakfast Pizza, \$5.50

Wednesday

French Toast, \$4

Thursday

Biscuits & Gravy

\$2.50 / \$4.50

Friday

Pancake Stack, \$4

Friday

Monte Cristo with

Hashbrowns, \$8

## Breakfast Burrito, \$7

flour tortilla stuffed with scrambled eggs and your choice of add-ins

## Omelet, \$6

three-egg omelet made with your choice of add-ins

## Egg Scramble, \$6

three eggs scrambled with your choice of add-ins

## Breakfast Sandwich\*, \$5

egg your way with bacon, sausage or ham served with cheese on toasted white, wheat, or English muffin

## Classic Breakfast\*, \$6.50

two eggs served your way with bacon or sausage, and two slices of toast

## Belgian Breakfast\*, \$8.50

two Belgian waffles, two eggs your way with bacon or sausage

*All menu items listed above served with hashbrowns or fresh fruit.*

# GROCERY STORE

The following items are available for purchase at the Hospitality Desk. Charges for these items can be added to resident accounts and billed through resident meal plans. **Orange juice, bread, milk, and eggs** are available for purchase through Prairie Star Restaurant. The Hospitality team members can assist residents with on-line grocery orders through Hy-Vee, which will be delivered directly to the cottage or apartment. A minimum spend of \$24.95 is required for Hy-Vee grocery delivery, and residents will need to use their personal credit card.

◇ Acetaminophen

◇ Anti-Diarrheal

◇ Aspirin

◇ Cheerios

◇ Chips Ahoy

◇ Cough Drops

◇ Folgers Coffee

◇ Ibuprofen

◇ Puffs Facial Tissue

◇ Listerine

◇ Meadowlark Honey

◇ Napkins

◇ Oreos

◇ Paper Towels

◇ Raisin Bran

◇ Toilet Paper

◇ Toothpaste

◇ Tums

# Weekly Opportunities Calendar April 2 to April 7

**Sunday • April 2** *Put your trash at the curb!*  
 10:30 a.m. ~ Worship Service, CR  
 10:30 a.m. ~ Transportation to FUMC, VE  
 4:00 p.m. ~ Olivia Collins Celebration of Life,  
 KSU Alumni Center

**Monday • April 3** *Trash & recycling pick-up*  
 8:30 a.m. ~ IL Resident Council, BR  
 9:30 a.m. ~ Town Meeting, EC  
 9:30 a.m. ~ Seated Strength, CR  
 10:30 a.m. ~ Weights 101, CR  
 11:30 a.m. ~ Sit & Be Fit, CR  
 1:00 p.m. ~ Parkinson's Exercise Class, CR  
 1:30 p.m. ~ God Talk, KSU CL  
 1:45 p.m. ~ Parkinson's Voice Class, CR  
 2:00 p.m. ~ Change & Loss Support Group, FHR  
 5:30 p.m. ~ Tuttle Creek Dinner, BR  
 7:00 p.m. ~ Community Bingo, CR

**Tuesday • April 4**  
 7:00 a.m. ~ Rock Steady Boxing, BF  
 10:00 a.m. ~ Memory Activities Class, KSU CL  
 10:30 a.m. ~ Steady Yourself, CR  
 11:15 a.m. ~ Chair Yoga, CR  
 12:00 p.m. ~ Kimball Luncheon, BR  
 12:05 p.m. ~ Mat Yoga, CR  
 1:00 p.m. ~ Fit 2 Fight Pd, MSC  
 2:00 p.m. ~ 10-Point Pitch, GR  
 2:00 p.m. ~ Prairie Star Writers, PR  
 3:00 p.m. ~ Ambassadors Meeting, BR  
 4:00 p.m. ~ Meadowlark Singers Practice, CR

**Wednesday • April 5**  
 9:30 a.m. ~ Seated Strength, CR  
 10:00 a.m. ~ Walmart/Dillons Shopping Trip, VE  
 10:00 a.m. ~ Mem. Care Partners Supp. Grp, FHR  
 10:00 a.m. ~ Memory Café, KSU CL  
 10:30 a.m. ~ Weights 101, CR  
 11:30 a.m. ~ Sit & Be Fit, CR  
 11:30 a.m. ~ Page Turners Book Club, PR  
 3:00 p.m. ~ Rock Steady Boxing, CR  
 3:00 p.m. ~ Sing-A-Long, EC  
 5:30 p.m. ~ Meadowlark Men's Supper, MR

**Thursday • April 6**  
 9:00 a.m. ~ Messenger Team, KSU CL  
 10:30 a.m. ~ Steady Yourself, CR  
 11:15 a.m. ~ Chair Yoga, CR  
 12:05 p.m. ~ Mat Yoga, CR

**Thursday • April 6**  
 1:00 p.m. ~ Parkinson's Exercise Class, CR  
 2:00 p.m. ~ Parkinson's Education Group, CR  
 5:30 p.m. ~ Meadowlark Circle Dinner, MR

**Friday • April 7**  
 9:30 a.m. ~ Seated Strength, CR  
 10:30 a.m. ~ Weights 101, CR  
 11:30 a.m. ~ Sit & Be Fit, CR  
 11:30 a.m. ~ UFM: Religions of Southeast Asia, EC  
 1:00 p.m. ~ Rock Steady Boxing, BF  
 3:00 p.m. ~ Catholic Mass, CR  
 7:00 p.m. ~ Good Friday Worship Service, CR

## Room Abbreviations

BF, Body First	KSU CL, KSU Classroom
BR, Bison Room	MR, Manhattan Room
CR, Community Room	PR, Patriot Room
CY, Courtyard	PS, Prairie Star Restaurant
EC, Event Center	MSC, Manhattan Sr. Center
FHR, Flint Hills Room	VBC, Verna Belle's Cafe
GC, Grosh Cinema	VE, Village Entrance
GR, Game Room	

# EASTER BUFFET

April 9th 11:00-1:30

Meadowlark Event Center \$27<sup>00</sup><sub>+TAX</sub>

RESERVE YOUR SPOT AT PRAIRIE STAR

or call (785) 323-3820



**PRAIRIESTAR**

Dine • Drink • Gather



# CHANNEL 1960

## Entertainment Guide

### Monday, April 3

9:30 a.m.	Seated Strength Exercise
10:30 a.m.	Weights 101 Exercise Class
11:30 a.m.	Sit & Be Fit Exercise Class
1:00 p.m.	Parkinson's Exercise Class

### Tuesday, April 4

10:30 a.m.	Steady Yourself Exercise Class
11:15 a.m.	Chair Yoga Exercise Class

### Wednesday, April 5

9:30 a.m.	Seated Strength Exercise
10:30 a.m.	Weights 101 Exercise Class
11:30 p.m.	Sit & Be Fit Exercise Class

### Thursday, April 6

10:30 a.m.	Steady Yourself Exercise Class
11:15 a.m.	Chair Yoga Exercise Class

### Friday, April 7

9:30 a.m.	Seated Strength Exercise Class
10:30 a.m.	Weights 101 Exercise Class
11:30 a.m.	Sit & Be Fit Exercise Class
1:00 p.m.	Parkinson's Exercise Class

### Saturday, April 8

9:30 a.m.	Band Bust Exercise Class
-----------	--------------------------



### Skilled Nursing

- 4/9 Virginia Snodgrass
- 4/18 Stephanie Upson
- 4/20 Kathleen Ward
- 4/20 Judith Jensen

### Assisted Living & Riley House

- 4/2 Donna Sesler
- 4/10 Wilma Schmeller
- 4/11 Bob Speer**
- 4/22 Susan Scott

### Independent Living

- 4/9 Janet Anders
- 4/9 Cam Beatty
- 4/13 Larry Parsons
- 4/17 Jeanne Lundin
- 4/17 Bob Johnson
- 4/19 Warren Prawl
- 4/20 Nancy Bowen
- 4/20 Donald Ely
- 4/22 Carole Fager
- 4/23 Jim Reed
- 4/25 Jim Sharp
- 4/27 Dorothy Bitler

## April Birthdays

4/29 Karen Matthews

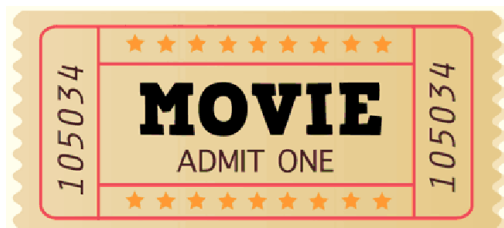
### Employees

- 4/1 Mackenzie Taggart
- 4/2 Malaney Walters
- 4/3 Quanita Payne
- 4/3 Jennifer Roudybush
- 4/3 Steve Schreiner
- 4/4 Calea Mulkins
- 4/6 Jen Schoenhofer
- 4/7 Walker Endres
- 4/7 Morgan Meier
- 4/8 Jessica Zhang
- 4/9 Concha Campa
- 4/9 Kalena Esparza
- 4/9 Madison Lagasse
- 4/9 Jessica Mies
- 4/9 Mark Morton
- 4/10 Greg Brown
- 4/10 Wei Tian
- 4/11 April Ascher
- 4/11 Sarah Emme
- 4/12 Megan Hesseltine
- 4/12 MacKenzie Palmer
- 4/13 Jason Meeker
- 4/14 Laura Boman



- 4/14\* Jenny Garrett
- 4/14 Kesiah Winter
- 4/15 Monte Spiller
- 4/16 Tom Ruzicka
- 4/17 Tiana Graves
- 4/17 Paige Habbart
- 4/18 Nadine Cowing
- 4/20 Teresa Golden-Perkins
- 4/20 Chris Loehr
- 4/22 Stephanie Kerr
- 4/23 Dakota Boren
- 4/23 Sara Gilbert
- 4/26 John Cragg
- 4/26 Kenzie Cramer
- 4/28 MyKayla Burgess
- 4/28 Alexis McNiff
- 4/28 Alexis Vu
- 4/29 Bryce Daney
- 4/29 Trisha Heitschmidt
- 4/29 Heathar Jones
- 4/29 Brook Marcotte
- 4/29 Amanda Stanzel

**Bold denotes milestone birthdays of 70, 80, 90, or 100+!**



## GROSH CINEMA SHOWTIMES

MONDAY TO SATURDAY 1:00 P.M. / 4:00 P.M. / 7:00 P.M.  
SUNDAY 2:00 P.M. / 6:00 P.M.

### SEASONAL SUNDAY: April 2

**CHOCOLAT** (2000) PG-13, 2 hr. 1 min. *Romance, Drama, Emotional*

Cast: Juliette Binoche, Lena Olin, & Johnny Depp

A single mother and her young daughter move into a peaceful French village and open a chocolate shop during the height of Lent. At first, the shop's rich, sensuous desserts scandalize the town, but the villagers soon learn to savor the sweetness.

### MUSICAL MONDAY: April 3

**MUSIC OF THE HEART** (1999) PG, 2 hr. 3 min. *Feel-Good, Emotional, Heartfelt*

Cast: Meryl Streep, Aidan Quinn, & Gloria Estefan

A violinist and single mother struggles to convince the administration at an East Harlem high school to let her establish a music program.

### TRUE TUESDAY: April 4

**THE OTHER SIDE OF THE MOUNTAIN** (1975) PG, 1 hr. 42 min. *Inspiring, Sentimental*

Cast: Marilyn Hassett, Beau Bridges, & Belinda Montgomery

Skiing champion Jill Kinmont's life takes a tragic turn when she suffers an accident that leaves her paralyzed from the neck down. Based on a true story.

### WESTERN WEDNESDAY: April 5

**THE QUICK AND THE DEAD** (1995) R *for western violence*, 1 hr. 45 min. *Exciting, Suspenseful*

Cast: Sharon Stone, Gene Hackman, & Russell Crowe

In this offbeat Western, a lady gunslinger arrives in a frontier town seeking revenge for the murder of her sheriff father by town boss John Herod.

### THEATER THURSDAY: April 6

**MR. HARRIGAN'S PHONE** (2022) PG-13, 1 hr. 46 min. *Ominous, Understated, Drama*

Cast: Jaeden Martell, Donald Sutherland, & Joe Tippett

A boy and an aging billionaire bond over books—and their first iPhones. But when the older man passes, their mysterious connections refuses to die.

### FUNNY FRIDAY: April 7

**R.I.P.D. REST IN PEACE DEPARTMENT** (2013) PG-13, 1 hr. 35 min. *Action, Adventure, Comedy*

Cast: Jeff Bridges, Ryan Reynolds, & Kevin Bacon

After his murder, a policeman joins the Rest in Peace Department: a team of undead cops who help the recently deceased join the afterlife.

### SWEET SATURDAY: April 8

**PETER RABBIT 2** (2021) PG, 1 hr. 33 min. *Goofy, Family*

Cast: Rose Byrne, Domhnall Gleeson, & David Oyelowo

Peter and his rabbit family leaves Thomas and Bea's garden for the city. When they get into trouble, Peter needs help from old friends to save the day.