

Blast from the Past

Decade days planned for Fridays in June



by Jana Armfield, Engagement Specialist

Let's blast into the past and celebrate Decade Days! Each Friday in June, staff and residents are invited to dress up and participate in activities that fit the decade or era that have been selected for that week! The first set of decades Meadowlark will celebrate is the 1920s and 1930s on Friday, June 3!

To begin the big day of festivities and recognize National Donut Day, there will be delicious old-fashioned donuts available in the Meadowlark Courtyard starting at 8 a.m.

In the afternoon, throw on your fancy flapper headbands, dresses, or zoot suits and head to the Prohibition Party at Prairie Star Pub. If you need a glamorous headband, be sure to attend the crafting session on Thursday, June 2, from 2:30 to 4 p.m. in the KSU Classroom, where you can make your own accessory.

At the Prohibition Party, enjoy a mocktail or cocktail tasting (whatever tickles your fancy), sipping popular

drinks of that era, such as a Sidecar or a Bee's Knees! Then, shortly thereafter, meet in the Manhattan Room, where a trivia contest awaits you! But unless you have the special code to get in, you might be out of luck; be sure to stop by the bar and make friends with the man in blue.

Finish out the day watching *The Great Gatsby* at 7 p.m. in Grosh Cinema, or enjoy the two other available showings during the day, at 1 and 4 p.m.

As a part of Decade Days in June, a winner for "Best Dressed" will be selected. Send your entry photo to jarmfield@meadowlark.org by 2 p.m. each Friday to be entered to win!

Mark your calendars for the remaining Fridays in June for more Decade Days! Friday, June 10, we will celebrate 1940s/50s; Friday, June 15 we'll have a far out time with the 1960s/70s; and Friday, June 17 let's rock out to the 1980s/90s. Check out the Messenger each week for more Decade Day details!

EVENTS & OPPORTUNITIES

New trash pick-up day

Because of continued growth and ongoing efforts to improve efficiencies, Howie's Trash Service has informed Meadowlark that our trash pick-up day will be moving to Monday. This change will become effective Monday, June 6. If you are a recycling customer, those items will now be picked up on the first and third Mondays of the month, effective June 6.

Let's get the guys together!

Prairie Star Restaurant will be hosting a Men's Social Dinner the first Wednesday of every month at 5:30 p.m. The Manhattan Room will be reserved for any of the Meadowlark Men who want to dine with others. Dinner can be purchased from the Prairie Star menu or enjoy the daily special. Sign up is not required, but please check in with the host when arriving.

Ladies Luncheon is back!

Prairie Star Restaurant is bringing back the monthly Ladies Luncheon! The luncheon will occur the second Thursday of every month at 11:30 a.m. All ladies at Meadowlark are invited to attend. We kindly request that all attending gather in the Game Room and wait for a Restaurant team member to seat you. Lunch can be purchased from the Prairie Star menu or daily special. The first luncheon will not feature a program, but will serve as a social opportunity for those attending.

New Directory of Services, June 1

A new Directory of Services for ancillary items such as housekeeping will be released around June 1, 2022. There are new prices for services listed in this booklet, and those prices will be effective June 1. Directory of Services booklets will be distributed once they arrive at Meadowlark in late May.

Volunteer needed

The plants are thirsty! Meadowlark is in search of a volunteer to help with watering our many beautiful plants in common areas (lobby, Verna Belle's Café, etc.). If this is something you could help with, please contact Jayme Minton at (785) 313-0454.

Call for nominations for resident member of Meadowlark's Board of Trustees

Beginning July 1, there will be a vacant position for an Independent Living resident to join the Meadowlark Board of Trustees. Prior to an election, a nomination process must take place. Nominations are welcome from the independent living population over a two-week period. Those nominating are to first contact the potential nominees to ensure they would be willing to serve.

Nomination forms will be available at the Hospitality Desk starting Thursday, May 19, through Thursday, June 2, at 5 p.m. There will be a box at the Hospitality desk in which to place your nominations.

If you have questions, contact Monte Spiller, at 323-3801.

Outdoor Committee

There is a sign-up sheet in the Blue Book for anyone who may have interest in being part of an Outdoor Committee. The committee would focus on promoting outdoor opportunities around Meadowlark's campus.

At this point, we are in the preliminary stages of getting the group assembled based on the amount of interest we receive. Please feel free to contact Monte Spiller, Resident Services Leader, at (785) 323-3801 if you have any questions.

Important Dates for Upcoming Election

This information is for the upcoming Primary election. The dates of registration may change, but here's what we know now.

~ June 1 at 12 p.m. (noon): Primary declaration changes for Democrat and Republicans.

Unaffiliated may affiliate at any time.

~ July 12: Voter registration deadline. If there is an address change, you must update your voter registration. Forms are available at the Hospitality Desk.

~ July 13: Advance voting begins. You may advance vote in the Riley County Clerk's office or you can complete an advance application and have the ballot mailed to your residence. If you already have completed an advance application, it will be mailed starting

EVENTS & OPPORTUNITIES

July 13. Advance voting applications are available at the Hospitality Desk.

~ July 26: Last day to request a mail-in ballot for the Primary Election.

~ Aug. 1: Advance voting at the County building closes at 12 p.m. (noon)

~ Aug. 2: Primary Election polls open from 7 a.m. to 7 p.m.

Music with Dave Zervas

Friday, May 27, at 7 p.m.

Meadowlark is happy to welcome back Dave Zervas! Come out at 7 p.m. Friday, May 27, to the Event Center and enjoy music with Dave, including rock ballads, acoustic songs, and country music. All are invited to attend.

Exercise classes, canceled

Monday, May 30

All exercise classes have been canceled for Monday, May 30. Video classes are available on Channel 1960. In-person classes will resume at normal times on Tuesday, May 31. Please see the Opportunities Calendar on page 10 for the full schedule listing.

National Smile Day Festivities

Tuesday, May 31

National Smile Day is Tuesday, May 31! There will be an abundance of activities available that day to help Meadowlark residents and staff celebrate in style!

Verna Belle's Cafe will offer a special breakfast option that day of smiley face pancakes! In the afternoon, enjoy the FREE come and go Sunshine & Smiles social event in the Courtyard, from 2 p.m. to 4 p.m.! While you are there, enjoy delicious strawberry shortcake, served by the Meadowlark Ambassadors.

Be sure to stop by the Smile Station, to capture your beautiful smile! Then, try your luck at the "Smile Smash" pinata area, full of special prizes and trinkets! Finish out the day with a creative painting class, starting at 5:15 p.m. in the Event Center. All supplies will be provided. Participants will create a beautiful sunset painting, based on a given example and instruction. There will be lots to do, so be sure to save the date and get ready to smile!

Let's Go Royals!

Wednesday, June 8, depart at 9:30 a.m.

Residents, staff, and family members are invited to Kansas City's Kaufman Stadium to watch the 2022 Royals. This year's trip is scheduled for Wednesday, June 8. The game will start at 1:10 p.m. against the Toronto Blue Jays. The cost of the trip is \$75, which includes a ticket to the game, transportation on a chartered 56-passenger bus, a variety of brunch snacks for on the way to the game, and a boxed meal including a sandwich, chips, fruit, cookie and bottled water for the return trip. Travelers are responsible for their own food and beverages during the game.

The bus will depart from the visitor parking area in front of the Event Center at 9:30 a.m. Please arrive by 9 a.m. Register in the Blue Book located at the Hospitality Desk. The cost can be paid by card, cash, payroll deducted for employees, or applied to your statement for residents.

Pd Education Group

Thursday, June 9, at 2 p.m.

You're invited to the monthly meeting of the Pd Education Group at 2 p.m. Thursday, June 9, in the Community Room. This month features "Just Between Us," a time for small group discussion focused on support and education for individuals living with Pd and their care partners.

Symphony in the Flint Hills

Saturday, June 11

Meadowlark is headed to the prairie for Symphony in the Flint Hills! The Signature Event is an annual gathering on the prairie celebrating art, music, and the ecology of the Flint Hills. The 2022 Event will take place on Irma's Pasture in Chase County Kansas on Saturday, June 11, featuring a sunset concert by the 80-piece Kansas City Symphony. The cost of the trip is \$135, which includes the ticket to the event, reserved seating in the chair-sitting area, and transportation from Meadowlark.

The event site is near Bazaar, approximately eight miles south of Cottonwood Falls on Flint Hills Scenic Byway K-177. The remote location of the site requires a substantial amount of walking on rocky, uneven dirt pathways.

See EVENTS, page 5

On Precious Cargo

by Helen Roser

Bus fare would have cost fifteen cents. So she walked, carrying her precious iron, wrapped in a towel, for her two-mile trip.

She worked at the novitiate of St. Mary's. She stood all day, ironing the nun's robes to perfection. Her aged legs were tired from standing all day.

Now her iron was broken and she carried it, wrapped in a towel, and headed for the dime store. She didn't know anywhere else to go.

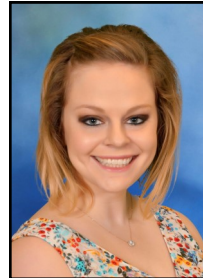
Having graduated from high school, I was working at the dime store. I had learned to work all the counters and was sort of an "all purpose" helper to the store manager.

We had just locked the front door when she arrived. "Please let me come in!" she begged. "My iron is broken! I need to fix it!"

The store manager said in his quiet voice as he unlocked the door: "Miss Newman will help you." I unwrapped the towel. What was needed was clear. As I lead her to the Electric Counter, I told her: "The electric plug is broken. A new one will cost ten cents. I'll put it on for you."

Her dime was wet with tears as she handed it to me, while God-blessing the manager and me. She took her precious cargo, wrapped in its towel, and headed back to St. Mary's. It was snowing.

Meet Victoria: KSU Graduate Student



Victoria Brenneis is a graduate student at Kansas State University studying landscape architecture. She believes effective outdoor environments in retirement communities and long-term care organizations can reduce staff burnout and turnover and increase the quality of resident care.

Victoria will be exploring this relationship by surveying residents and staff about preferences of the existing outdoor environments at Meadowlark and will use these findings to inform design recommendations that she will present in the fall. Next Wednesday, you will have the opportunity to meet Victoria and learn more about her goals, background, and research. She will be giving a short presentation at 2 p.m. June 1 in the Event Center. All are welcome!



Mr. Manhattan

You are Invited

Join us in the Community Celebration for

Dr. C. Clyde Jones' 100th Birthday Bash

Friday, June 17, 2022

K-State College of Business Building
Manhattan, KS

4 p.m. to 6 p.m.

In honor of Dr. Jones, please consider making a donation to his established K-State Scholarships. Checks may be made payable to the KSU Foundation with the fund name or number in the memo line.

The Margaret "Midge" Memorial Cancer Research Fund (F73319)
The Karen Eileen Jones Prevette Memorial Scholarship Fund (F84344)
The Dr. C. Clyde Jones Graduate Scholarship in Business (R73285)

KANSAS STATE
UNIVERSITY

What do you call a Frenchman in sandals?

Phillipe Floppe.

EVENTS, from page 3

If you would like to attend with Meadowlark, there is a sign-up sheet in the Blue Book at the Hospitality Desk. There is a no-refund policy for the ticket purchased if the event takes place. In the event of weather postponement on June 11, the Signature Event will take place on the rain date of June 12. If weather cancels the weekend events completely, GA ticket-holders will be eligible for a refund. If you are interested, please sign up or contact Monte Spiller at 323-3801.



Skilled Nursing

6/3 June Crumpler
6/3 Larry Bowers
6/3 Jim Ferguson
6/3 Floyd Choate
6/4 Jean Brecheisen
6/6 Ethel Morin
6/12 Margaret Barnett
6/15 Bob Kruh
6/17 Shirley Hines
6/18 Jill Orr
6/23 **Lois Kennedy**

Assisted Living & Riley House

6/1 Betty Johns
6/13 Margret Lanich
6/15 Betty Mosier
6/26 Donna Green

Independent Living

6/2 Bob Goudy
6/3 Bob Phillips
6/4 John Trail
6/5 Delores Thomas
6/6 Faith Roach
6/8 Barbara Rees
6/9 Donald Erikson
6/10 **Leo Lake**
6/12 Pat Brensing

June Birthdays

6/12 Carol Parsons
6/14 **Pat Miksch**
6/14 Kay Shanks
6/15 Mel Chastain
6/17 Shirley Stone
6/17 June Myers
6/18 Harry Manges
6/26 **Helen Roser**
6/28 Dee Ann Herde
6/29 John Henderson
6/30 Barbara Johnson
6/30 Jo Fey

Employees

6/1 Madi Cantu Encarnacion
6/1 Ecclesia Settanni
6/2 Monica Betzen
6/2 Sara Hillard
6/4 Mariah Clark
6/4 Rachel Jaeger
6/4 Briana Lipp
6/4 Butch Smith
6/5 Michelle Haub
6/5 Jennifer Haug
6/6 MacKenna Cassel
6/6 Brooke Williams
6/7 Jessica Pagan
6/8 Chelsea Heidrick
6/8 Michelle Lawson
6/8 Sarah Valentine



6/9 **Brayden Cox**
6/9 Lass Kargel
6/10 Ashley Freed
6/10 Cassie Wittmeier
6/11 Swathi Punreddy
6/13 Kirsti Glotzbach
6/14 Lonnie Baker
6/14 Connor Nekola
6/15 Shaquila Bachu
6/15 Lexi Baughman
6/15 Sreya Kemling
6/16 Vivian Dane
6/16 Raudy Latta
6/16 Chris Nelson
6/18 Laura Neinhaus
6/20 Kaitlin Cook
6/24 Le'Keathia Franklin
6/24 Kendal Proctor
6/24 Carson Root
6/25 Jasmine Bobo
6/25 Autumn Ewert
6/25 Audra Leonard
6/25 Alexis Montgomery
6/26 Mary Crouser
6/26 Daylone Smith
6/28 Hannah Litke
6/30 Yesi Hoover
6/30 Ava Hornung
6/30 Laura King
6/30 Arlene Lundberg

Bold denotes milestone birthdays of 70, 80, 90, or 100+ !

Work That Brain!

1	2	3	4		5	6	7	8		9	10	11	12	13
14					15					16				
17				18						19				
20						21			22					
			23		24									
25	26	27						28			29	30	31	
32							33				34			
35					36	37				38				
39					40			41	42					
43				44				45						
			46				47							
	48	49							50		51	52	53	
54						55			56					
57						58				59				
60						61				62				

ACROSS

1. Ribald
5. A large arm of the sea
9. Settle down for the night
14. Hurting
15. Sloth
16. Acquiesce
17. Broadcasts
19. Not dirty
20. Not animal
21. Most rundown
23. Lacking taste
25. Police, television, or train ____
28. Back of the boat
29. Commercials
32. Without difficulty
33. How old you are
34. Raindrop sound
35. Tube
36. Extraterrestrial
38. Prospector's find
39. Anagram of "Sage"
40. Roam
41. Cadge
43. Local Area Network
44. Dowel
45. Algae
46. Knock-down-drag-out fights
48. Sideways passes
50. Verify
54. Adult female person
55. Accessible
57. Smell
58. Audition tape
59. Horse color
60. Breezy
61. Stair
62. Terminates

DOWN

- | | | |
|---------------------------------|---|----------------------|
| 1. Strip of wood | 13. 5 plus 5 | 37. Slowpokes |
| 2. Beige | 18. Symbol of slowness | 42. Mend |
| 3. Hit hard | 22. Protections from harm | 44. More than enough |
| 4. Sequence of powerful leaders | 24. A canoe traveler (Canadian history) | 45. Benne |
| 5. Sweetened chicle | 25. Floral leaf | 46. Be upright |
| 6. Occurring together | 26. Coniferous forest | 47. Armada |
| 7. Subsequently | 27. Poplar variety | 48. Hubs |
| 8. Central body of an airplane | 29. Companionless | 49. Ends a prayer |
| 9. Bigot | 30. Evade | 51. Black, in poetry |
| 10. Looks at lustfully | 31. Velocity | 52. Clothed |
| 11. Minerals | 33. Assist | 53. Knows (Scottish) |
| 12. Chair | 34. A sharp steel wedge | 54. West southwest |
| | | 56. Police officer |

Art Engagement *from the* Beach Museum of Art

LINE ... The use of line in an artwork can have many functions. It can provide the **outline** of an object along with **space and dimension**. Lines can **move** the viewer's eye through the artwork and show the subject's **movement**. **Texture** is often created with lines. The **organization** of a composition can be established with lines, allowing the artist to define the foreground, middle ground, and background.

The print below is a linocut print. This method of relief printing uses hard lines that create a bold look with high contrast. The use of minimal objects with clean bold lines can create a sense of peacefulness within a composition. As you look at this print, how do you observe the artist using line? Would you describe this image as peaceful? What adjective would you use to describe this work?



Charles Leroy Marshall Sr. (United States, 1905 - 1992), *War Memorial, Kansas City, MO*, ca. 1937, Linocut on paper, KSU, Marianna Kistler Beach Museum of Art, gift of Charles L. Marshall, Jr., 2003.221

RESTAURANT **SPECIALS**

Sunday, May 29	\$13 Lunch Honey-Garlic Pork Tenderloin Roasted Red Potatoes Fresh Green Beans	\$13 Dinner Honey-Garlic Pork Tenderloin Roasted Red Potatoes Fresh Green Beans
Monday, May 30	\$13 Lunch Memorial Day Buffet <i>sliders, hot dogs, baked beans, pub chips, watermelon, & dessert</i>	\$12 Dinner Lasagna Garlic Bread Broccoli
Tuesday, May 31	\$10 Lunch Chicken Fettucine Alfredo Garlic Toast	\$14 Dinner Beef Stroganoff Egg Noodles Buttered Carrots
Wednesday, June 1	\$9 Lunch Chicken Parmesan Sandwich Pub Chips	\$13 Dinner Orange Chicken Stir Fry Vegetables White Rice
Thursday, June 2	\$11 Lunch Smothered Beef Burrito Mexican Rice Refried Beans	\$14 Dinner Fried Catfish Fried Okra Asparagus Medley
Friday, June 3	\$10 Lunch Pasta Bar	\$14 Dinner Chili Lime Chicken Tacos Pineapple Salsa Black Bean & Corn Salad
Saturday, June 4	\$10 Lunch Shrimp Po' Boy French Fries	\$18 Dinner Mediterranean Baked Halibut Roasted Red Potatoes Broccolini

Verna Belle's Cafe

MONDAY

Closed for Memorial Day

TUESDAY

Breakfast: National Smile Day Pancakes, \$4.50 / \$6.50

Lunch: Turkey Reuben, \$5.00/\$7.00

(Turkey, sauerkraut, Swiss cheese, and Thousand Island Dressing on butter-toasted rye bread served with your choice of side)

WEDNESDAY

Breakfast: Breakfast Burritos with Fruit, \$4.50 / \$6.50

Lunch: Grilled Chicken Mac & Cheese Bowl, \$5.00/\$7.00

(Grilled chicken over creamy mac and cheese topped with your choice of toppings from the salad bar.)

THURSDAY

Breakfast: Biscuits & Gravy, \$2.50 / \$4.50

Lunch: Philly Cheese Steak, \$5.00 / \$7.00

(Roast beef, sautéed peppers and onions, and Swiss cheese on a hoagie roll served with choice of side)

FRIDAY

Breakfast: Waffle or Pancake with Bacon or Sausage, \$4.50 / \$6.50

Lunch: Chicken Burrito Bowls, \$5.00/\$7.00

(cilantro lime rice topped with chicken and black beans and your choice of toppings from the salad bar.)

SATURDAY

Breakfast: Ala Carte Menu Eggs, omelet, bacon, sausage, toast, & fruit

MON.-FRI., 7 AM. - 2 PM / SAT., 7 AM. - 11 AM.

Daily Specials

Weekly Opportunities Calendar May 29 to June 3

Sunday • May 29

10:30 a.m. ~ Worship Service, CR
10:30 a.m. ~ Transportation to FUMC, VE

Monday • May 30

11 a.m. to 2 p.m. ~ Memorial Day Buffet, CY
7:00 p.m. ~ Bingo Night, CR

Tuesday • May 31 *Trash & recycling pick-up*

7:00 a.m. ~ Rock Steady Boxing, BF
10:00 a.m. ~ Memory Activities Class, KSU CL
10:30 a.m. ~ Steady Yourself, CR
11:15 a.m. ~ Chair Yoga, CR
2:00 p.m. ~ Sunshine & Smiles, CY
2:00 p.m. ~ Smile Smash, CY
5:15 p.m. ~ Sunsets & Smiles Painting Class, EC
5:30 p.m. ~ Social Dining, MR

Wednesday • June 1

9:30 a.m. ~ Seated Strength, CR
10:00 a.m. ~ Walmart/Dillons Shopping Trip, VE
10:00 a.m. ~ Memory Care Partner Group, FHR
10:00 a.m. ~ Memory Café, KSU CL
10:30 a.m. ~ Weights 101, CR
11:30 a.m. ~ Sit & Be Fit, CR
2:00 p.m. ~ Outdoor Environments with KSU Grad Student, EC
3:00 p.m. ~ Sing-A-Long, EC
3:00 p.m. ~ Rock Steady Boxing, CR
5:30 p.m. ~ Men's Social Dinner, BR

Thursday • June 2

9:00 a.m. ~ Messenger Team, KSU CL
10:30 a.m. ~ Steady Yourself, CR
11:15 a.m. ~ Chair Yoga, CR
1:00 p.m. ~ Parkinson's Exercise Class, CR
2:30 p.m. ~ Flapper Headband Craft, KSU CL
5:30 p.m. ~ Meadowlark Circle Dinner, BR

Friday • June 3 *Decade Day: 1920s & 1930s*

8:00 a.m. ~ National Donut Day: Old-Fashioned Donuts (FREE!), CY
9:00 a.m. ~ Prairie Star Menu Suggestions, BR
9:30 a.m. ~ Seated Strength, CR
10:00 a.m. ~ Art Committee Meeting, FHR
10:30 a.m. ~ Weights 101, CR
11:30 a.m. ~ Sit & Be Fit, CR

Friday • June 3 *Decade Day: 1920s & 1930s*

1:00 p.m. ~ Rock Steady Boxing, BF
3:00 p.m. ~ Catholic Mass, CR
3:30 p.m. ~ Prohibition Party, PS Pub
4:00 p.m. ~ 1920s & 1930s Trivia, MR

Room Abbreviations

BF, Body First	GR, Game Room
BR, Bison Room	KSU CL, KSU Classroom
CR, Community Room	MR, Manhattan Room
CY, Courtyard	PR, Patriot Room
EC, Event Center	PS, Prairie Star Restaurant
FHR, Flint Hills Room	VBC, Verna Belle's Cafe
GC, Grosh Cinema	VE, Village Entrance

Zoom Opportunities

E-mail Michelle at michelle.haub@meadowlark.org for log-in information unless otherwise noted below.

Tuesday, May 31

10 a.m.	Memory Activities Class
11:15 a.m.	Chair Yoga

Wednesday, June 1

10 a.m.	Memory Café
---------	-------------

Thursday, June 2

11:15 a.m.	Chair Yoga
1 p.m.	Parkinson's Exercise Class

I have a fear of speed bumps.

But, I am slowly getting over it.



CHANNEL 1960

Entertainment Guide

Monday, May 30

9:30 a.m.	Seated Strength Exercise
10:30 a.m.	Weights 101 Exercise Class
11:30 a.m.	Sit & Be Fit Exercise Class
1:00 p.m.	Parkinson's Exercise Class

Tuesday, May 31

10:30 a.m.	Steady Yourself Exercise Class
11:15 a.m.	Chair Yoga Exercise Class

Wednesday, June 1

9:30 a.m.	Seated Strength Exercise
10:30 a.m.	Weights 101 Exercise Class
11:30 p.m.	Sit & Be Fit Exercise Class

Thursday, June 2

10:30 a.m.	Steady Yourself Exercise Class
11:15 a.m.	Chair Yoga Exercise Class

Friday, June 3

9:30 a.m.	Seated Strength Exercise Class
10:30 a.m.	Weights 101 Exercise Class
11:30 a.m.	Sit & Be Fit Exercise Class
1:00 p.m.	Parkinson's Exercise Class

Saturday, June 4

9:30 a.m.	Band Bust Exercise Class
2:00 p.m.	Band Bust Exercise Class

Solutions from 5/19.

K	C	I	N	N	O	C	E	H	C	R	N	N	O
S	E	V	E	R	I	N	S	E	N	F	B	M	E
S	I	L	A	S	R	A	M	S	E	A	O	L	A
P	L	D	O	R	S	E	Y	R	R	R	O	E	I
N	M	I	L	L	E	R	G	E	T	L	H	B	R
H	E	R	M	A	N	U	B	O	A	A	K	A	A
B	E	O	V	M	S	K	N	N	M	V	C	S	P
E	K	A	H	O	L	O	N	D	A	O	E	I	U
N	S	I	N	A	T	R	A	O	N	D	B	E	R
S	N	A	M	D	O	O	G	I	G	N	U	G	K
O	S	W	A	T	R	O	U	S	I	A	R	G	R
N	R	D	D	A	E	M	T	O	O	S	B	R	I
A	R	M	S	T	R	O	N	G	N	B	A	E	C
N	I	M	K	S	H	U	U	R	E	U	O	N	H

3	2	4	7	1	6	9	8	5
5	9	8	3	2	4	7	1	6
6	1	7	9	5	8	2	4	3
8	4	3	5	7	2	1	6	9
9	5	1	8	6	3	4	7	2
7	6	2	1	4	9	3	5	8
1	3	9	4	8	5	6	2	7
4	8	6	2	9	7	5	3	1
2	7	5	6	3	1	8	9	4

2	1	3	4	9	5	6	8	7
5	4	8	7	6	3	1	2	9
9	6	7	8	2	1	4	5	3
7	5	6	3	4	8	2	9	1
4	2	9	6	1	7	8	3	5
3	8	1	9	5	2	7	6	4
1	9	5	2	8	4	3	7	6
6	7	2	1	3	9	5	4	8
8	3	4	5	7	6	9	1	2



GROSH CINEMA SHOWTIMES

MONDAY TO SATURDAY 1:00 P.M. / 4:00 P.M. / 7:00 P.M.
SUNDAY 2:00 P.M. / 6:00 P.M.

SEASONAL SUNDAY: May 29

MEMORIAL DAY (2012) R *for some war violence*, 1 hr. 44 min. *Emotional, Drama, Violent*

Cast: Jonathan Bennett, James Cromwell, & John Cromwell

When 13-year-old Kyle finds his grandfather's World War II-era Army footlocker, the old vet agrees to tell the lad the combat history behind some of the objects in the trunk. The tales he tells foreshadows Kyle's own experiences years later.

MUSICAL MONDAY: May 30

SOUTH PACIFIC (1958) NR, 2 hr. 37 min. *Musical, Romance, War*

Cast: Rossano Brazzi, Mitzi Gaynor, & John Kerr

On a South Pacific island during World War II, love blooms between a young nurse and a secretive Frenchman who's being courted for a dangerous military mission.

NATIONAL SMILE DAY TUESDAY: May 31

STARSKY & HUTCH (2004) PG-13, 1 hr. 40 min. *Goofy, Exciting, & Comedy*

Cast: Rossano Brazzi, Mitzi Gaynor, & John Kerr

New undercover cop partners Starsky and Hutch must overcome their differences to solve an important case with help from street informant Huggy Bear.

WESTERN WEDNESDAY: June 1

THE QUICK AND THE DEAD (1995) R *for western violence*, 1 hr. 45 min. *Exciting, Western, Action*

Cast: Sharon Stone, Gene Hackman, & Russell Crowe

In this offbeat Western, a lady gunslinger arrives in a frontier town seeking revenge for the murder of her sheriff father by town boss John Herod.

THEATER THURSDAY: June 2

THE ADAM PROJECT (2022) PG-13, 1 hr. 46 min. *Witty, Feel-Good, Exciting*

Cast: Ryan Reynolds, Mark Ruffalo, & Jennifer Garner

After accidentally crash-landing in 2022, time-traveling fighter pilot Adam Reed teams up with his 12-year-old self on a mission to save the future.

DECADE FRIDAY ~ 1920/1930: June 3

THE GREAT GATSBY (1974) PG, 2 hr. 23 min. *Romantic, Sentimental, Drama*

Cast: Robert Redford, Mia Farrow, & Bruce Dern

Mysterious millionaire Jay Gatsby is obsessed with Daisy Buchanan. Beyond Gatsby's grasp, Daisy is married to unfaithful Tom, making for a love triangle that ends with broken hearts.

SWEET SATURDAY: June 4

RESIDENT REQUEST

VICTORIA & ABDUL (2017) PG-13, 1 hr. 51 min. *Heartfelt, Movie Based on Real Life*

Cast: Judi Dench, Ali Fazal, & Tim Pigott-Smith

A cheerfully naïve clerk from India visits England to bestow a gift on Queen Victoria, then strikes up an unlikely friendship with the lonely monarch.