

Grow Green Match Day

Support nursing scholarships during annual 24 hours of giving

by Becky Fitzgerald, Development Dir.

The 9th annual Grow Green Match Day on Thursday, April 22, is a tremendous opportunity for the Manhattan community and Meadowlark Foundation. On that day, donations made through the Greater Manhattan Community Foundation to participating nonprofit agencies will receive a 50% match!

Meadowlark Foundation is joining 69 other local organizations in urging our donors to participate. With COVID-19 turning our world upside down and organizations entering a period of recovery, GMCF is repeating the Grow Green procedures that were introduced in 2020:

~ There is no live event at Grow Green headquarters. Donors may mail a check, donate online with a credit card, or deliver a check on or before Match Day to the GMCF office, 2nd floor of the Colony Square office building on Poyntz.

~ Donations will be made available to organizations for immediate needs, while the 50% match will go into endowed funds. Prior to 2020, the reverse was true. Your donations went into our endowed fund managed by GMCF, enabling Meadowlark Foundation to continue to develop our services

and meet the future needs of our campus and community. Previous matching totals have been received soon after the event and benefited the Good Samaritan Fund and, last year, Meadowlark's COVID-19 Protection Plan.

Combined donations up to a total of \$20,000 will be matched at 50%, giving a maximum of \$10,000 in matching funds to any one organization.

Gifts to Meadowlark Foundation, which appears as Meadowlark Hills on the Grow Green giving form and on GMCF's website, will support scholarships for current Meadowlark employees who would like to further their education to become licensed practical nurses or registered nurses.

Now in its third year, Meadowlark's scholarship program rewards the initiative of talented current employees, while, in the future, providing Meadowlark's licensed care households with highly trained staff in what appears to be a perpetual nurses shortage. Employees who receive a scholarship agree to work at Meadowlark for at least two years following graduation.



With a money plant in hand, Meadowlark resident Jim Reed and his camera-shy wife, Sherry, look forward to supporting Meadowlark Foundation during 2021's Grow Green Match Day. The annual day of giving, sponsored by Greater Manhattan Community Foundation, begins at 12 a.m. Thursday, April 22.

This spring, Meadowlark would like to expand the program, offering smaller scholarships to students attending three local or area nursing schools and who aren't current Meadowlark employees. These scholarship recipients must agree to work at Meadowlark for at least a year after receiving an LPN or RN degree.

See GROW GREEN, page 5

EVENTS & OPPORTUNITIES

Update from Lonnie Baker, CEO

This week's update from Lonnie Baker, CEO, will be an excerpt from the April 2021 Town Meeting, which occurred Monday, April 5. Lonnie gave a campus update during the meeting, and the video version will air the following dates and times.

- ~ Friday, April 9, at 12 p.m. & 5 p.m.
- ~ Saturday, April 10, at 9:15 a.m. & 3:15 p.m.
- ~ Sunday, April 11, at 12 p.m.

Church Ladies

Friday, April 9, at 7 p.m.

Meadowlark welcomes back the Church Ladies on Friday, April 9, at 7 p.m. in Prairie Star Restaurant's Event Center!

The harmony-based acoustic trio from the Manhattan area have been performing together for five years, and the group enjoys coming to Meadowlark. Members include Mary Louise Stahl on upright bass and mandolin, Joan Nelson on 12-string guitar, and Cindy Carlyon on melodica, upright bass, and kazoo! Their musical selections include secular and non-secular music, bluegrass, gospel, country, and folk.

April's Theme BINGO Night

Monday, April 12, at 7 p.m.

April's Theme BINGO night, Tutti Fruitti, will occur on Monday, April 12, at 7 p.m. in the Event Center! To celebrate this theme, we will be honoring National Peach Cobbler Day, and there will be exciting decorations and prizes to fit the theme, such as delicious fruity desserts that lucky players can take home to enjoy! Player buy-in will be \$1 for the use of two playing cards. BINGO nights occur on the second Monday of the month. No advanced registration is necessary.

Virtual Walking Tour of Downtown Manhattan

Friday, April 16, at 2 p.m.

Meadowlark is thrilled to welcome Allana Parker to present a "Virtual Walking Tour of Downtown Manhattan," at 2 p.m. Friday, April 16, in Prairie Star Restaurant's Event Center.

Downtown Manhattan is listed on the National Register of Historical Places, covering a six-block area and comprised of 61 buildings. In this presentation, we will take a closer look at some of

the unique buildings, stories, and characters from downtown Manhattan's history. The presenter, Allana Parker, is Curator of Design at the Riley County Historical Museum. Parker has served as curator since 2012.

Lunch at Liquid Art Winery

Friday, April 23, at 2 p.m.

Sign up for a lunch outing to Liquid Art Winery & Estate, scheduled for Friday, April 23!

Liquid Art Winery is located right here in Manhattan and was founded in 2014 by

Kansas natives Dave and Danielle Tegtmeier. It is comprised of a 20-acre Estate vineyard, tasting room, full-production winery, and event center.

The Estate is perched on top of fractured limestone and flint covered hillsides in an area that was once an ancient mountain range. The terroir of the area replicates the soil profile and terrain of some of the most prominent grape-growing regions in the world, allowing the Tegtmeiers to craft premium wines from old-world grape varietals using sustainable viticulture.

Visit the Estate for the low cost of \$20 per person. The trip cost includes: transportation, your choice of one pizza, and one glass of cider or wine. You do have the option to order additional glasses or purchase a bottle of wine to take home, and those costs will be additional.

The pizza options for lunch are

~ The Bosslady: olive oil, thinly sliced spinach, roma tomatoes, mozzarella, cheddar, & feta

~ The Three Little Pigs: red sauce, pepperoni, smoked ham, pork sausage, Italian sausage, & mozzarella

~ The Bootlegger: BBQ Sauce, chicken, red onion, & mozzarella

The Estate is opening an hour earlier to accommodate our group. The bus will depart from the Village Entrance at 11:45 a.m. If you would like to attend, please sign up in the Blue Book at the Hospitality Desk. Please indicate your pizza choice on the sign-up sheet.



2021 Symphony in the Flint Hills

Saturday, June 12

The Symphony in the Flint Hills announced plans to Salute the Santa Fe Trail with world-class music and nature at this year's annual prairie gathering near the historic trail town of Council Grove. This year's event is scheduled for Saturday, June 12, featuring a sunset concert by the 80-piece Kansas City Symphony at North Lakeview Pasture, along with activities highlighting the Santa Fe Trail bicentennial.

Travel to the Symphony with Meadowlark! The cost of the trip is \$130, which includes the ticket to the event, reserved seating with chair back, and transportation from Meadowlark. Sign up for the trip in the Blue Book at the Hospitality Desk. **No refunds can be issued once the tickets are purchased.** In the event of weather postponement on June 12, the event will take place on the rain date of June 13. If weather cancels the weekend events completely, general admission ticket holders will be eligible for a refund. If you are interested, please sign up or contact Monte Spiller, Resident Services Leader, at 323-3801.

UNDERSTANDING PARKINSON'S DISEASE DEMENTIA

An education program presented by the Alzheimer's Association®



Wednesday, April 14th
12:00 p.m. - 1:00 p.m.

Join us to learn about Parkinson's Disease Dementia with Guest Speaker, Michelle Haub, MS, CCC-SLP/L.

We will discuss:

- The impact of Parkinson's and Parkinson's Disease dementia and how they affect the brain.
- The symptoms and care needs associated with Parkinson's Disease Dementia.
- Effective ways to provide and manage care.
- Resources available to you.

alzheimer's association®
Heart of America Chapter

MEADOWLARK
Parkinson's Program

MEADOWLARK
Memory Program

On the Attack Rabbit

by Helen Roser

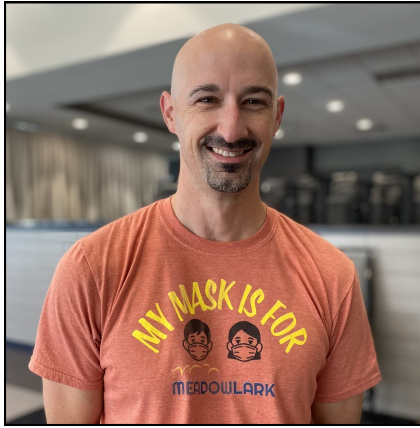
When I was a kid, I had a brown rabbit I called Bunnie. Down the street, a neighbor had a cat. Our other neighborhood animal was a new dog. He was not a regular dog. It took his owners 15 minutes to tell us how special his pedigree was.

That was no surprise. Everything they did was special. (playing music or baking cakes.) They told us the special dog they were buying was named Dream. We hadn't seen him yet.

None of our yards were fenced. Our backyard had flower beds around the sides and grass in the middle. Mama hung her wash out there. Bunnie's cage was in a corner. He liked to be let out to check out the flower beds. He never tried to run away. This was his territory and he loved it.

The day Dream was let out to check his new neighborhood, he came trotting happily into our yard. Bunnie saw him, stopped checking, and looked like he couldn't believe his eyes. Then Bunnie crouched down and began running. This was a rabbit running to, not from, a dog. A dog with a special pedigree.

Bunnie ran just past Dream, then stopped, raised up and bit Dream on his hind leg. Dream let out a shriek/yelp, spun around and took off for home with his tail between his legs. That was the last time I saw Dream. I heard he "seemed unhappy and wouldn't go outside." So they sold him or gave him away. They probably thought our neighborhood wasn't high-tone enough for such a special dog.



LEADER OF THE PACK

Congratulations to Meadowlark's Leader of the Pack for April 2021, Jeff Heidbreder, Fitness Leader! Jeff exceeds all expectations - Meadowlark appreciates his flexibility, especially since the onset of the COVID-19 pandemic, and his willingness to fill different roles. Jeff brings consistency and sense of calm during these unpredictable times. He continues to form and maintain great relationships with residents and team members. Meadowlark is lucky to have Jeff!

Thank You, Pat!

by Jana Armfield, Volunteer Engagement Specialist



National Library Workers Day was Tuesday, April 6. This is a day to recognize and celebrate the valuable contributions made by all library workers.

Meadowlark is lucky to have one such woman, Pat Hook, who contributes her time

and talent to this cause. If you do not know her, you may recognize her by her bright colored shirts, kind disposition, shiny ponytail, and floral masks. You can often find her in the Meadowlark Library, organizing books, newspapers, and magazines, and creating seasonal displays. She is the go-to-gal for book recommendations and is eager to assist others with their library needs. Pat is regularly going above and beyond to gather and deliver books for fellow residents who may be unable to do so themselves and sharing her daily edition of the Topeka Capitol newspaper with others to enjoy.

As a resident of the 4th floor, Pat graciously replenishes the candy dish, making life sweeter, and provides her own plants, flowers, and many other beautiful decorations for display at the ends of the 4th floor hall. Her special touches make Meadowlark a home, and we thank Pat for all she has contributed as a valued resident and volunteer.

Technology Assistance

Raelynn Slipke, Meadowlark Volunteer, will be coming twice a week to assist residents with their electronic devices (iPads, computer, phones, etc.) to the best of her abilities.

Raelynn will be donating her time to answer general questions and assist with simple tasks. Examples might include how to set up a Facebook account, how to send a photo via email or by phone to a friend and creating an online grocery order.

The Meadowlark IT team will be contacted for any questions/issues that remain unresolved. She will meet residents in the Game Room, on a first-come-first-serve basis. Raelynn will be on campus for one hour each Monday and Friday morning starting at 9:30 a.m. Her first scheduled Technology Assistance Hour is set for Monday, April 12.

Raelynn looks forward to meeting residents and answering your questions!

Guess Who's Back?

by Jana Armfield, Volunteer Engagement Specialist
Meadowlark community volunteers are back! Liz Rogers is the first community volunteer to step foot on campus after a year of COVID restrictions. She became a Meadowlark volunteer during the Fall of 2019 and we are thrilled to have her return.

You can see Liz on a weekly basis in the Game Room on Tuesday afternoons, often with IL resident Dotty Blacker. The pair are getting to know one another through good conversation and puzzles. Feel free to stop by and say "hi" if you see them!

Throughout the next few weeks, you may see some more familiar volunteer faces in the Community Center, or brand-new ones, assisting with a variety of activities. Please give them a warm Meadowlark welcome!

GROW GREEN, from page 1

GMCF

Here's how you may help us attract and retain nurses:

1. Visit

<https://www.growgreenmanhattan.com/> to give online from 12:00 a.m. through 11:59 p.m. on Thursday, April 22.

2. Or, write a check to Greater Manhattan Community Foundation. If Meadowlark Foundation is the only beneficiary of your gift, you may write "Grow Green-Meadowlark" on the memo line.

~ Check writers, complete the giving form included on the last two pages of today's Messenger, indicating the beneficiary/beneficiaries of your gift. (Meadowlark Hills is listed in the Basic Human Needs & Healthcare category.)

~ Even if giving to more than one organization, write only one check for the total amount. The

form you submit will indicate to GMCF how you'd like your gift divided.

~ No matter the day a check is written, date it

4/22/2021 and mail it and the giving form on or before 4/22/2021. **Checks must be dated 4/22/2021 and postmarked by April 22 to be included in the 2021 Match Day total.**

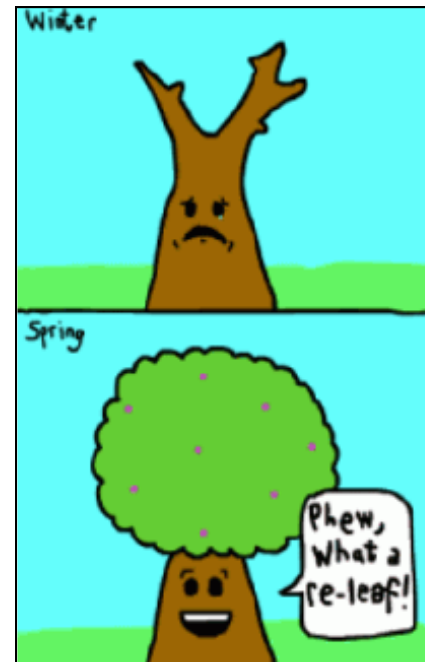
~ Mail to: GMCF, P.O. Box 1127, Manhattan, KS, 66505-1127
3. Meadowlark residents may submit donations and donation forms to be delivered by Meadowlark Foundation in a bundle to GMCF. If you have a check and form to submit, please deliver to the Hospitality Desk by noon on Thursday, April 22.

Although gifts of any amount are welcome, individual contributions ranging from \$25 to \$1,000 per organization will receive a local match at \$.50 per \$1, so a \$1,000 gift can receive a \$500 local match! Gifts are tax-deductible; donors receive a

receipt from GMCF.

If participation in last April's event is any indication, the Nursing Scholarship Program is sure to make cents. During that 24-hour period, Meadowlark Foundation was one of 15 organizations receiving \$20,000 or more, and so earned the maximum match amount of \$10,000.

If you have questions, please contact Becky Fitzgerald, Development Director, at 323-3843. Thank you for considering this opportunity!



WHO ARE WE?

Throwback Thursday!

Do you know the Meadowlark residents who are featured in this image?

If you have a guess, send it to Sarah at sguge@meadowlark.org or submit your guess to the Hospitality Desk. Check out next week's Messenger to learn more!

Work That Brain!

2				7	3		4
	3	5			8	6	7
			5	4			3
	9		7				
		6					9
3	5				7		4
4				1		7	
7							9

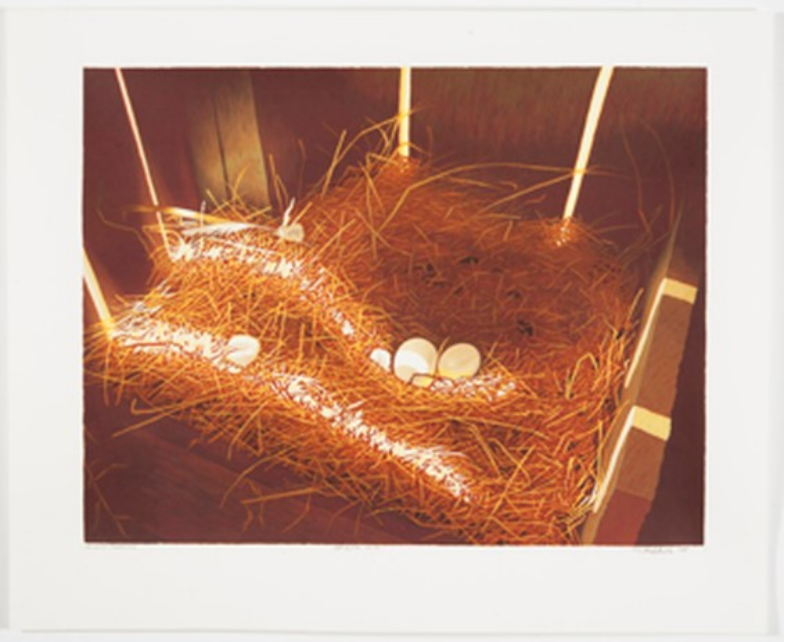
			1			2	6
8			6		4	3	
		1			8		
9						6	
	6				7	9	5
						7	
	7	4					3
			8			1	
1				2			

Art Engagement *from the* Beach Museum of Art

Texture can be tactile or visual in art. An artist may use line, color, shading, repetition, or patterns to create visual texture on a flat surface such as canvas or paper. Take a moment to look at the two artworks from our collection. One image is a close-up of a large painting on muslin, and the other is a screen print on paper. Compare the visual texture between the two. As you look closer, what other similarities or differences do you see?



Shirley Smith
Soft Landing, 1970
Acrylic on canvas
KSU, Marianna Kistler Beach Museum of Art,
gift of the estate of Shirley Smith, 2014.70
Page 6



Joe Price
August Morning, 1978
Screenprint on paper
KSU, Marianna Kistler Beach Museum of Art, gift of Joe Price,
2015.18



PRAIRIE STAR

Dine • Drink • Gather

(785) 323-3820
Dine In, Delivery, & Carry Out
Reservations optional

Restaurant Hours
Breakfast
Daily from 7 to 10 a.m.
Lunch & Dinner
Daily from 10:30 a.m. to 7 p.m.
Espresso Drinks
7 a.m. to 4 p.m.

Visit Prairie Star's Pub the week of April 12 and enjoy the NEW Signature drink menu!

SUNDAY	April 11 ~ Lunch \$14	Dinner \$14
	Braised Brisket with Bordelaise Sauce Scalloped Potatoes Vegetable du Jour	Coconut Shrimp Roasted Red Potatoes Vegetable du Jour
MONDAY	April 12 ~ Lunch \$10	Dinner \$12
	Spaghetti with Meat Sauce Garlic Toast Choice of Vegetable	Baked Ham with Balsamic Cherry Sauce Au Gratin Potatoes Vegetable du Jour
TUESDAY	April 13 ~ Lunch \$10	Dinner \$13
	Fried Chicken Sandwich Sweet Potato Fries Coleslaw	Bourbon-Pecan Chicken Breast Mashed Potatoes Vegetable du Jour
WED.	April 14 ~ Lunch \$10	Dinner \$14
	Tamale Pie Rice & Beans	Trout Almondine with Tartar Sauce Smoked Gouda Scalloped Potatoes Vegetable du Jour
THURS.	April 15 ~ Lunch \$10	Dinner \$14
	Ham Loaf Roasted Red Potatoes Choice of Vegetable	London Broil Loaded Mashed Potatoes Vegetable du Jour
FRIDAY	April 16 ~ Lunch \$10	Dinner \$12
	Shrimp Po' Boy Pasta Salad Choice of Vegetable	Fried Chicken Mashed Potatoes & Gravy Vegetable du Jour
SAT.	April 17 ~ Lunch \$10	Dinner \$15
	Beef Quesadilla Rice & Beans	Ribeye Steak Baked Potato Vegetable du Jour

Weekly Opportunities Calendar *April 11 to April 16*

Sunday • April 11

10:30 a.m. ~ Worship Service, EC

Monday • April 12

9:30 a.m. ~ Seated Strength, CR
9:30 a.m. ~ Technology Assistance, GR
10:30 a.m. ~ Weights 101, CR
11:30 a.m. ~ Sit & Be Fit, CR
12:00 p.m. ~ Meadowlark Valley Luncheon, BR
1:00 p.m. ~ Parkinson's Exercise Class, CR
1:00 p.m. ~ PD Care Partner Support Grp, PR
1:45 p.m. ~ Parkinson's Voice Class, CR
7:00 p.m. ~ THEME BINGO Night, EC

Tuesday • April 13

Trash & recycling pick-up

10:30 a.m. ~ Steady Yourself, CR
11:15 a.m. ~ Chair Yoga, CR
2:00 p.m. ~ Memory Activities Class, KSU CL
2:00 p.m. ~ 10-Point Pitch, GR
2:30 p.m. ~ Blood Pressure Clinic, FHR
3:00 p.m. ~ Coffee Corner, EC

Wednesday • April 14

9:30 a.m. ~ Seated Strength, CR
10:00 a.m. ~ Walmart/Dillons Shopping Trip, VE
10:00 a.m. ~ Memory Care Partner Group, WCR
10:30 a.m. ~ Weights 101, CR
11:30 a.m. ~ Sit & Be Fit, CR
1:00 p.m. ~ Memory Café, CR
3:00 p.m. ~ Rock Steady Boxing, BF
5:30 p.m. ~ Eastside Neighborhood Supper, BR

Thursday • April 15

9:00 a.m. ~ Messenger Team, KSU CL
10:30 a.m. ~ Steady Yourself, CR
11:15 a.m. ~ Chair Yoga, CR
1:00 p.m. ~ Parkinson's Exercise Class, CR
3:00 p.m. ~ Rock Steady Boxing, BF
5:30 p.m. ~ Meadowlark Circle Supper, BR

Friday • April 16

9:30 a.m. ~ Seated Strength, CR
9:30 a.m. ~ Technology Assistance, GR
10:30 a.m. ~ Weights 101, CR
11:30 a.m. ~ Sit & Be Fit, CR
1:00 p.m. ~ Parkinson's Exercise Class, BF
2:00 p.m. ~ Virtual Walking Tour of Downtown Manhattan with Allana Parker, EC

Room Abbreviations

BF, Body First	GR, Game Room
BR, Bison Room	HD, Hospitality Desk
CR, Community Room	KSU CL, KSU Classroom
CY, Courtyard	PR, Patriot Room
EC, Event Center	PS, Prairie Star Restaurant
FHR, Flint Hills Room	VE, Village Entrance
GC, Grosh Cinema	



E-mail Michelle at michelle.haub@meadowlark.org for log-in information unless otherwise noted below.

Monday, April 12

10:30 a.m.	Mindful Memoirs Group
1 p.m.	Parkinson's Exercise Class
1:45 p.m.	Parkinson's Voice Class
2 p.m.	Change & Loss Support Group Email kspearman@meadowlark.org for log-in info.

Tuesday, April 13

2 p.m.	Memory Activities Class
--------	-------------------------

Wednesday, April 14

10 a.m.	Memory Care Partner Support Group Contact Bridget for the log-in info by calling (785) 323-3837.
12 p.m.	Presentation: Understanding Parkinson's Disease Dementia
1 p.m.	Memory Café

Thursday, April 15

1 p.m.	Parkinson's Exercise Class
--------	----------------------------

Friday, April 16

10:30a.m.	Mindful Memoirs Group
-----------	-----------------------



CHANNEL 1960 Entertainment Guide

Sunday, April 11

9:00 a.m.	Sweat It Out Exercise Class
10:30 a.m.	NEW Worship Service with Chaplain Patty Brown-Barnett
12:00 p.m.	(Re-run) Meadowlark Update with Lonnie Baker, CEO (Town Meeting)
2:00 p.m.	(Re-run) Worship Service with Chaplain Patty Brown-Barnett
3:00 p.m.	Progressive Muscle Relaxation with Bridget Larkin, LMSW
3:30 p.m.	Chair Yoga

Monday, April 12

9:30 a.m.	Seated Strength Exercise
10:30 a.m.	Weights 101 Exercise Class
11:15 a.m.	Sit & Be Fit Exercise Class
1:00 p.m.	Parkinson's Exercise Class
2:00 p.m.	Weights 101 Exercise Class

Tuesday, April 13

10:30 a.m.	Steady Yourself Exercise Class
11:30 a.m.	NEW! Chair Yoga Exercise Class
1:00 p.m.	Sweat It Out Exercise Class
2:00 p.m.	Steady Yourself Exercise Class

Wednesday, April 14

9:30 a.m.	Seated Strength Exercise
10:30 a.m.	Weights 101 Exercise Class
11:30 a.m.	(Re-run) Worship Service with Chaplain Patty Brown-Barnett
1:00 p.m.	Sit & Be Fit Exercise Class
2:00 p.m.	Weights 101 Exercise Class

Thursday, April 15

10:30 a.m.	Steady Yourself Exercise Class
11:30 a.m.	Chair Yoga Exercise Class
1:00 p.m.	Sweat It Out Exercise Class
2:00 p.m.	Steady Yourself Exercise Class

Friday, April 16

9:30 a.m.	Seated Strength Exercise Class
10:30 a.m.	Weights 101 Exercise Class
11:15 a.m.	Sit & Be Fit Exercise Class
1:00 p.m.	Parkinson's Exercise Class
2:00 p.m.	Weights 101 Exercise Class

Saturday, April 17

9:30 a.m.	Band Bust Exercise Class
2:00 p.m.	Band Bust Exercise Class

Solution from 4/1.

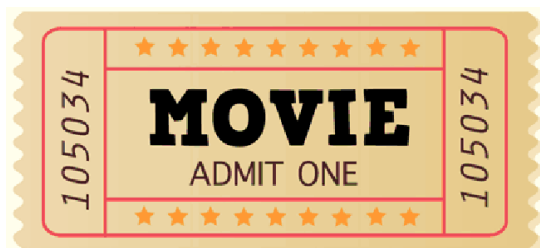
C	O	T	E		C	A	P	E	D		H	U	L	L
A	C	R	E		A	L	A	T	E		U	R	I	A
P	H	I	L	O	S	O	P	H	Y		M	I	N	D
E	R	E		S	I	N	A	I		F	A	N	G	S
R	E	S	T	I	N	G		C	H	I	N	A		
			R	E	G			D	I	A	B	E	T	I
C	H	O	I	R		F	A	S	T	S		I	C	E
L	O	C	O		M	O	L	T	S		F	O	E	S
A	L	T		C	U	R	E	S		F	E	N	D	S
N	E	U	R	O	S	E	S		I	L	L			
		P	O	P	E	S		G	O	A	T	I	S	H
S	A	L	T	Y		T	A	R	D	Y		D	I	Y
A	R	E	A		D	A	M	O	I	S	E	L	L	E
M	I	T	T		A	L	I	G	N		A	E	O	N
E	A	S	E		B	L	A	S	E		U	R	S	A

Bunny Hunt Winners

Dorthea Boutz
Sandra Emley
Polly Ferrell
Alexis Gillespie
Ella Gillespie

Skip & Joan Jones
Nyle Larson
Delores Renner
Kay Shanks

Winners, please collect your prize at the Hospitality Desk by Monday, April 12. Thank you to all who participated, and to Steve Hall, for making and donating the beautiful wooden rabbits for prize winners to enjoy!



GROSH CINEMA SHOWTIMES

MONDAY TO SATURDAY 1:00 P.M. / 4:00 P.M. / 7:00 P.M.
SUNDAY 2:00 P.M. / 6:00 P.M.

SEASONAL SUNDAY: April 11

WALL STREET: MONEY NEVER SLEEPS (2010) PG-13, 2 hr. 18 min. *Crime Drama, Cerebral*

Cast: Michael Douglas, Shia LaBeouf, & Frank Langella

As the global economy teeters on the brink of disaster, a young Wall Street trader partners with disgraced former Wall Street corporate raider Gordon Gekko on a two-tiered mission: to alert the financial community to the coming doom, and to find out who was responsible for the death of the young trader's mentor.

MUSICAL MONDAY: April 12

INTO THE WOODS (2014) PG 2 hr. 6 min. *Fantasy, Action-Adventure, Musical*

Cast: Meryl Streep, Emily Blunt, & James Corden

A modern twist on the beloved fairy tales you thought you knew. Meryl Streep stars in this musical saga about a humble baker and his wife, whose longing to have a child sends them on a quest to reverse a witch's curse.

TRUE TUESDAY: April 13

THE BIG SHORT (2015) R *for pervasive language & some sexuality*, 2 hr. 10 min. *Biographies*

Cast: Christian Bale, Steve Carrell, & Ryan Gosling

In 2006 and 2007, a group of investors bet against the US mortgage market. In their research they discover how flawed and corrupt the market is.

WESTERN WEDNESDAY: April 14

THE STOLEN (2016) TV-14, 1 hr. 37 min. *Emotional, Suspenseful, Western*

Cast: Alice Eve, Jack Davenport, & Graham McTavish

A well-to-do British woman must venture into New Zealand's wild and dangerous unknown when her baby son is kidnapped and held for ransom.

THRILLER THURSDAY: April 15

MARGIN CALL (2011) R *for language* 1 hr. 47 min. *Suspenseful, Drama, Thriller*

Cast: Kevin Spacey, Paul Bettany, & Jeremy Irons

An analyst uncovers information that could destroy his employer in this drama about an investment bank early on in the 2008 financial crisis. When he alerts management, the firm must decide if it should alert clients or abscond with the profits.

FEATURE FRIDAY: April 16

2021 Oscar Nominee

PIECES OF A WOMAN (2020) R *for language, sexual content, drug use*, 2 hr. 6min. *Emotional*

Cast: Vanessa Kirby, Shia LaBeouf, & Ellen Burstyn

A heartbreaking home birth leaves a woman grappling with the profound emotional fallout, isolated from her partner and family by chasm of grief.

SWEET SATURDAY: April 17

5 FLIGHTS UP (2014) PG-13, 1 hr. 32 min. *Comedy, Drama, Sentimental*

Cast: Diane Keaton, Morgan Freeman, & Cynthia Nixon

A couple finds unexpected drama when, after 40 years of living in the same Brooklyn walk-up, they attempt to sell their apartment and buy a new one.

2021 GROW GREEN Match Day

Mail In form for Check Donations

PLEASE COMPLETE THE NEXT PAGE WITH YOUR DONATION INFORMATION

*If email address is supplied, all gifts will receive an electronic gift acknowledgment for tax purposes immediately after donation is posted. We do not share e-mail addresses. **Please print legibly**

**If paying by check, please write ONE CHECK made out to GMCF
for the TOTAL amount of your donation**

Mail check postmarked on or before 4/22/2021 and pg. 2 of this form to:

**GMCF
P.O. Box 1127
Manhattan, KS 66505-1127**

Postmarked 4/22/2021 or before

Questions? Call Elaine at (785)341-5689
or email elained@mcfks.org - makennae@mcfks.org

Thank You!

Last year, our world was turned upside down by a pandemic, so in response, GMCF turned things upside down too! All gifts given by donors were immediately available for use by the participating charitable funds. The 50% match went into their endowed fund at GMCF. Many organizations are still feeling the effects of COVID on their operations, so this year donor gifts will again be immediately available for use by charitable organizations, with the 50% match going into the endowed fund at GMCF.

The GMCF 2020 COVID-19 Recovery Fund is a giving option again this year. Gifts to this fund will be directed to relief and recovery efforts for our friends & neighbors who are in greatest need as a result of the pandemic.



The Greater Manhattan Community Foundation is a non-profit 501(c)(3) organization – EIN #48-1215574, incorporated in the State of Kansas

DONOR NAME(S) _____

PHONE # _____ *EMAIL (Required for electronic receipt) _____

STREET ADDRESS _____ CITY/ST/ZIP _____

GMCF publishes donor names, but not amount given. Please check here **ONLY** if you wish to remain anonymous: _____

Please write donation amount on line next to each fund. Gifts between \$25 & \$1,000 per agency may be matched by 50%.

ANIMAL SUPPORT

_____ Riley County Humane Society
_____ Sunset Zoo

ARTS & HUMANITIES

_____ Manhattan Arts Center
_____ Midwest Dream Car Collection

BASIC HUMAN NEEDS & HEALTHCARE

_____ Be Able
_____ Big Lakes Developmental Center, Inc.
_____ Crisis Center New Shelter Fund
_____ Fairy Godmothers
_____ Flint Hills Breadbasket
_____ Flint Hills Community Clinic
_____ GMCF 2020 COVID-19 Recovery Fund
_____ Green Apple Bikes INC
_____ Guardians
_____ Good Shepherd Homecare and Hospice
_____ Kansas Family Stroke Foundation
_____ Katie's Way Charities, LLC
_____ Konza United Way
_____ Manhattan Area Habitat for Humanity
_____ Manhattan Emergency Shelter, Inc.
_____ Manhattan Riley County Crime Stoppers
_____ Manhattan Soup Kitchen
_____ Meadowlark Hills
_____ No Stone Unturned Foundation, Inc.
_____ Pawnee Mental Health Services, Inc.
_____ Riley County Perinatal Coalition
_____ Riley County Seniors' Service Center
_____ Ronald McDonald House Charities of NE KS
_____ Shepherd's Crossing
_____ Taken Too Soon

CHILDREN & YOUTH

_____ Big Brothers Big Sisters
_____ Boy Scouts of America Coronado Area Council
_____ Boys & Girls Club of Manhattan
_____ First Tee of Manhattan
_____ Flint Hills Foster Teen Camps
_____ From Cradles to Crayons Childcare
_____ Gregory P. St. Amand Memorial Fund

_____ SUB-TOTAL (Row 1)

CHILDREN & YOUTH, CONT'D

_____ Manhattan Breakfast Optimist Club
_____ Parents as Teachers - David Flinchbaugh
_____ Relate 360
_____ Riley County 4-H Foundation
_____ Sunflower CASA Project, Inc.
_____ Tyler Dowling Memorial Fund
_____ Tyler J. White Memorial Fund
_____ Wonder Workshop Children's Museum

COMMUNITY DEVELOPMENT & LEADERSHIP

_____ GMCF Young Trustees
_____ Leadership Manhattan Scholarship Fund
_____ Manhattan Konza Rotary
_____ Manhattan Rotary Club

FAITH BASED

_____ Ecumenical Campus Ministry (ECM)
_____ First Congregational Church
_____ Unitarian Universalist Fellowship

PRESERVATION, CONSERVATION & BEAUTIFICATION

_____ Audubon of Kansas, Inc.
_____ Jan Garton Fund for Environment Stewardship
_____ KS Assoc. for Conservation & Environmental Education
_____ Riley County Genealogical Society
_____ Riley County Historical Society

SCHOLARSHIP & EDUCATION

_____ American Association of University Women
_____ Engineers Foundation of Kansas
_____ Fairchild Terrace Scholarship
_____ Flint Hills Christian School
_____ Flint Hills Discovery Center Youth Education
_____ Kansas Foundation for AG in the Classroom
_____ League of Women Voters Stella Harris Scholarship
_____ Manhattan Area Technical College Foundation
_____ Manhattan Catholic Schools
_____ Manhattan Kiwanis Scholarship
_____ Manhattan-Ogden Public Schools Foundation
_____ RCPD Scholarship Fund
_____ Roger Trenary Tennis & Education Fund
_____ UFM Community Learning Center

_____ SUB-TOTAL (Row 2)

TOTAL DONATION (Row 1 + Row 2 on page two): \$ _____

Write only ONE check for entire amount made payable to GMCF