

Meadowlark Hills Messenger

Meadowlark Hills Retirement Community

June 2, 2016

Legacy Society Awards

Two residents among those honored at 14th annual banquet

Submitted by Becky Fitzgerald

Hilton. Hupe. Hawley.
Current Meadowlark Hills resident Evelyn Hawley has had only one last initial since the day she was born in 1923, and learning about her career and knowing her contributions at Meadowlark Hills, other h-words and phrases come to mind: helpful, hard-working, high standards, hospitable.

Evelyn, who worked for 26 years in Physical Facilities at Kansas State University and who has donated time and money to various Meadowlark Hills projects, was honored Monday, May 23, at the 14th annual Legacy Society Banquet sponsored by Meadowlark Hills Foundation.

She was presented the 2016 Legacy Award by Board of Directors president and master of ceremonies Terry Arthur. The award recognizes persons who have given a lifetime of public service, financial contributions and volunteer efforts to the Meadowlark Hills community.

Evelyn and her late husband, Bob Hawley, gave two major gifts in 2007 and 2008 to the Our Home, Our Health, Our Future capital campaign, one of which supported the creation of Kansas Room Pub & Lounge. Another major gift in 2009 prompted construction of a sidewalk on Meadowlark Road, extending from Meadowlark Valley to Kimball Ave.

See Awards, page 5.



Photo by Will Gold

Award winners Pam Oehme, Evelyn Hawley and First Baptist Church, represented by the Rev. John Parsley, pose with Terry Arthur (left), Foundation board president and Meadowlark Hills CEO Lonnie Baker.

UPCOMING EVENTS & ANNOUNCEMENTS

Jokes of the Week

What did the judge say to the dentist?
Do you swear to pull the tooth, the
whole tooth and nothing but the
tooth?

What do you get if you cross a football
player with a pay phone?
A wide receiver.

What do you call a cow that eats your
grass?
A lawn moo-er.

How do they serve smart hamburgers?
On honor rolls.

Why do fish live in salt water?
Because pepper makes them sneeze.

Knock, knock.
Who's there?
Arfur.
Arfur who?
Arfur got!

What do you get when you cross a
piece of paper with scissors?
Confetti.

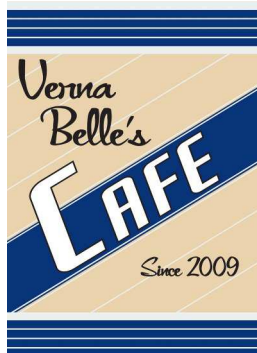
Your Life Story Writing Class

Consider what Tom Brokaw writes in his book "An Album of Memories, Personal Histories from the Greatest Generation":

"Members of that generation, characteristically, are modest and yet quietly proud of what they have achieved individually and collectively, and proud also to have had their accomplishments recognized at this stage of their lives. In turn, their children and grandchildren tell me that they are reexamining their own lives and values, measuring them against the legacy of their parents and grandparents. It is a kind of symbolic effect in which the generations, by interacting, are giving new meaning to their lives.

It was a common trait of the Greatest Generation not to discuss the difficult times and how those times shape their lives, but now, in their twilight years, more and more members of that remarkable group of men and women are determined to share their experiences. I have come to realize that there are still so many stories to be told..."

The Meadowlark Hills Prairie Star Life Story Class meets in the Living Room on the first, third and fifth Tuesdays of each month for one hour to discuss, write and then, if wanting to, read to the class whatever we have chosen to write. Always, it is an enjoyable part of the class. Cathy Hedge is an excellent teacher to help motivate class members to write for the next generation.



Lunch Specials

June 5 – June 11

Hours: Monday–Friday, 8 a.m. to 5 p.m.
Saturday–Sunday, 9 a.m. to 1 pm.

Sunday, June 5 - Ham Salad Sandwich with Side	\$3.75/\$5.50
Monday, June 6 - Beef Fajita Quesadilla with Soup or Chips	\$3.75/\$5.50
Tuesday, June 7 - Bagel Club Sandwich with Fruit Salad	\$3.75/\$5.50
Wednesday, June 8 - Pesto & Tomato Grilled Cheese with Tomato Soup	\$3.75/\$5.50
Thursday, June 9 - Grilled Chicken and Mac & Cheese Bowl	\$5.50
Friday, June 10 - Chicago Dog with Broccoli Salad	\$5.50
Saturday, June 11 - Tuna Melt with Side	\$3.75/\$5.50

UPCOMING EVENTS & ANNOUNCEMENTS

Manhattatters Ladies Luncheon

Thursday, June 9, at 12:30 p.m.

Everyone likes a good story with a new twist and that is just what Pat Edwards and Polly Ferrell have planned for the Manhattatters Ladies Luncheon at 12:30 p.m. Thursday, June 9, in the Manhattan Room. The theme is “A Good Yarn.”

Good yarns have been around since the beginning of time in all cultures. Yarns have been passed down from generation to generation. Today a good yarn is still enjoyed and treasured by everyone.

A tasty summer lunch menu is planned and will surely please your palate. It takes “two to tango” and also takes — or more — to spin a good yarn. You don’t want to miss this one — a bargain at \$8.

Sign up in the Blue Book located at the Hospitality Desk and we will see you at the lunch table.

Grief Support Group

Starting Tuesday, July 12, at 10:30 a.m.

Join Bridget Larkin, LMSW, Social Services Leader, and Patty Brown-Barnett, Chaplain, in a Grief Support Group from 10:30 to 11:30 a.m. on Tuesday’s starting July 12 through Sept. 27.

The Grief Support Group provides the opportunity to discuss grief and healing in a supportive environment. The group discussion will be guided by “Understanding Your Grief” by Alan D. Wolfelt, Ph.D. The cost of the book is \$11. To RSVP or request additional information, please contact Bridget at (785) 323-3837 or at bridget.larkin@meadowlark.org.

Legislative Wrap-up

Saturday, June 11, at 9:30 a.m.

With the regular business of the Kansas Legislature now concluded, the League of Women Voters has planned a public meeting featuring local legislators, who will give their wrap-up comments on the 2016 session. All are welcome.

The meeting will be held in the Community Room. Coffee and donuts will be available at 9:30 a.m. and the presentations will begin at 10 a.m. Invited are Senator Tom Hawk and Representatives Ron Highland, Susie Swanson, Sydney Carlin and Tom Phillips.

Parking during Summerfest, June 3

Meadowlark Road will be blocked off from the fork to the Village Entrance all day Friday. If you have guests visiting, please make sure they are not parked in the visitor parking between 7 a.m. Friday, June 3, through noon Saturday, June 4.

Kansas City Royals vs. Cleveland Indians Baseball Game

Monday, July 18, at 7:15 p.m.

Meadowlark Hills currently has a tentative trip scheduled to the Kansas City Royals vs. the Cleveland Indians game at 7:15 p.m. Monday, July 18. This game should not be confused with the trip we are taking Thursday, Sept. 29, to the Royals vs. Minnesota Twins. Both trips include residents, staff and families.

If you are interested in attending the game in July, please sign up in the Blue Book located at the Hospitality Desk. In order to keep the group price of \$29 per ticket, we will need at least 20 people signed up.

Cost for transportation will be based on the number of people we have attending as we will be using Meadowlark Transportation for this particular game. A decision to go forth with the trip or cancel will be based on the number of people signed up by Friday, July 1. If you have questions, please contact Monte Spiller at (785) 323-3801.

Water Maintenance, June 2

Maintenance will be shutting off the water at 2 p.m. today, June 2, to complete some maintenance work.

The water shutoff will affect the West Tower, Honstead, Sloan and everyone located in the West Village apartments. The work will be completed by 3 p.m.

.....
Summerfest
.....

COMMUNITY BLOCK PARTY

Complete with a cook-out, inflatables,
live entertainment by the Santiago
Brothers, games for children,
sno-cones and a beer garden.

**AT 5 P.M.
FRIDAY, JUNE 3
PRAIRIE STAR PATIO**

UPCOMING EVENTS & ANNOUNCEMENTS

Kansas Wheat Innovation Center Tour

Wednesday, June 8, at 9:50 a.m.

Meadowlark Hills is taking a trip to the Kansas Wheat Innovation Center Wednesday, June 8. The group will have the opportunity to tour the complex's key features that includes several growth chambers, freezers and laboratory pods in which researchers are able to control the growth environment of wheat plants from emergence to maturity.

Four separate greenhouses have been built on the north side of the laboratory, one of which is air conditioned, allowing research to take place even in the middle of hot Kansas summers. The research facility is also home to some of the operations of K-State's world-renowned Wheat Genetics and Genomics Resource Center (WGGRC).

A sign up sheet is available at the Hospitality Desk in the Blue Book and the group will depart from the Village Entrance at 9:50 a.m. The cost for transportation is \$3 per person.

Craig Plotner

Friday, June 10, at 7 p.m.

Coming to you from Lucas, Kansas...Craig has been singing and playing guitar for groups throughout the United States for many years. Growing up in southern California and Arizona, Craig has found Kansas to contain everything he wants.

Sharing his music throughout many Kansas communities for the past 8 years, he will be here to take your requests from his extensive song list and introduce you to some of his own music creations.

For a fun night of great music and interaction, join us at 7 p.m. Friday, June 10, in the Community Room.



Outdoor Encounters

Submitted by Nathan Bolls

Some days just sort of go along. Others are spectacular. Yesterday, for me, was a spectacular. No, I was not preoccupied with the colorful botanical effulgence that newly surrounds us.

I got to spend three hours watching dead trees! Concerning fallen trees, John Muir, the naturalist, explorer, and writer of Yosemite Valley fame, once remarked that "The burial of a tree is a beautiful thing." But let's begin with the standing dead.

Guess I should explain lest more of you than at present begin to think that my elevator doesn't stop at every floor. A dead tree, the bigger the better, the deader the better, constitutes a very special micro-habitat.

In the dead-and-loose-bark stage, numerous small creatures, including tree frogs, hide behind the bark for shelter, or maybe even for overwintering. Various insects drill holes in dead wood in which to deposit eggs, or maybe just in under a patch of loose bark. And who hasn't watched woodpeckers and nuthatches pecking their way along dead trunks and limbs in search of buried larvae?

Some birds nest in dead trunk holes. Squirrels may dig out a shelter cavity. Although the large pileated woodpecker sometimes is seen in eastern Kansas, I have not yet seen, in any of our dead trees, the large characteristic oval-shaped holes they peck out in the trunks. Fungi have a field day.

And when a dead tree falls, many sorts of more terrestrially-minded critters make homes either underneath or by burrowing into the log. Fungi and microbes switch into over-drive. Female carpenter ants burrow out huge chambers for either food storage or shelter.

But (time for a commercial), I ask the physical plant crew to aid in keeping our standing dead standing for as long as possible. If it seems that the potential falling of one of our trees may put someone in harm's way, please don't just cut it down. Try to run wire or cable from ground up onto the tree so that it will--in its time--fall harmlessly away from some trail or bench. They all will fall soon enough; and please don't haul them away.

Dead trees, both standing and down, add an important patch to the quilt of biodiversity we wish to nurture in our MLH Natural Area. And a healthy biodiversity, as argued by the famous conservationist, Aldo Leopold, yields not just land, but "community!"

LETTER TO THE MESSENGER

Many Thanks!

Submitted by Sheldon Edelman

Many thanks to all who came to my birthday party on May 29, and also thanks to the many residents who sent such nice cards.

I did not expect that there would be so many who would be present. I am humbled and grateful for the strong support by my fellow residents. I hope that I will be able to reciprocate.

LEGACY SOCIETY AWARDS

Continued, Legacy Society Awards

The Good Samaritan Fund benefitted significantly for several years from the Hawleys' generosity, and various Meadowlark Hills endeavors benefitted from Evelyn's talents and energy. She delivered the weekly Messenger to cottage residents, served refreshments at Coffee Corner, developed a bluebird trail on campus, helped staff prepare promotional items for mailing and hand-addressed invitations to our community events.

Other award winners include Pam Oehme, who received the Margaret Wheat Spirit of Meadowlark Hills Award; First Baptist Church, the Good Samaritan Award recipient, and the Rev. Cam McConnell, who received the Joanna Lyle Excellence in Service Award.

The spirit award honors a resident who embodies the spirit and person-directed culture of Meadowlark Hills. Pam's previous work at Meadowlark Hills as a nurse, her dedication to family members who previously lived at Meadowlark and her and her husband, Fred's, varied charitable giving through Meadowlark Hills Foundation caught the attention of the Foundation's Board of Directors. "A resident's disability or address isn't a barrier to her interest in his or her well-being," noted Terry Arthur during the event.

First Baptist Church, one of Meadowlark Hills' six founding churches, has offered support and guidance since before the community's grand opening in 1980. In addition to providing office space for early administrators, hymnals for our first worship services and leaders for 30-plus years of Vespers, the church has faithfully donated more than

\$15,000 to the Good Samaritan Fund since 1999.

Cam McConnell, senior pastor at the First Presbyterian Church, was unable to attend the event, so the Rev. Kati Collins accepted the service award on his behalf. For about 16 years, Rev. McConnell has facilitated a discussion group at Meadowlark Hills called "Newspaper & Bible", and he's officiated at Meadowlark Hills' Sunday evening service one month annual for 15 years.

Slightly more than 100 residents, staff, current and former board members and Legacy Society members attended this year's event, which was held at the Bluemont Hotel. The Legacy Society includes those who have named Meadowlark Hills Foundation as a recipient of charitable giving through estate planning. Also, the Society welcomes donors who have given one-time or cumulative gifts which total \$25,000 or more.

Dr. Michael Wesch, associate professor of cultural anthropology at K-State, was the banquet speaker. For the past few spring semesters, Wesch's undergraduate students have lived at Meadowlark Hills. He discussed the positive relationships students and residents have forged and shared a digital game and video students created after learning about the previous and current life experiences of residents.

If you'd like to know more about becoming a Legacy Society member, please contact Becky Fitzgerald, Development Director, at 323-3843.

ASK SARAH

Let's go bring back summer!

Submitted by Sarah Duggan

One of my favorite Disney movies is Frozen. If you haven't seen it, Frozen is the story of a newly crowned Queen Elsa, who accidentally uses her power to turn things into ice, which ends up cursing her home in infinite winter. Elsa's sister, Anna, teams up with a mountain man, his playful reindeer and a snowman to save the kingdom. Olaf the snowman is undoubtedly my second favorite character in the film (Second to Queen Elsa!) and he doesn't have any experience with the season of summer. As they set off to find Queen Elsa, he gleefully cheers, "Let's go bring back summer!"

It's time again for Meadowlark Hills to welcome summer in our own tradition – Summerfest!

Please join me at 5 p.m. Friday, June 3, for our annual block party. The food line, inflatables, sno-cone stand, beer



garden and game stations will be set up across the lawn and the street between the main entrance and the fork in the road at Meadowlark Valley. Dinner will begin at 5 p.m. and at 6 p.m., the music will start. The band, the Santiago Brothers, will join us for two hours of musical entertainment!

The road will be blocked off from the fork off the south drive to the Village Entrance all day on Friday, June 3. If you have guests visiting, please make sure they are not parked in the visitor parking after 7 a.m. on Friday. The rented items for the party will be delivered and set-up during the morning hours.

All rental items will be retrieved by the company in the morning on Saturday, June 4.

If you have questions regarding this year's Summerfest, please contact me at (785) 323-3860. See you tomorrow (fingers crossed for beautiful weather!) – and thanks for stopping by!

UPCOMING EVENTS & ANNOUNCEMENTS

Osher Informational Meeting

Monday, June 6, at 10 a.m.

Registration for Summer 2016 Osher Lifelong Learning Program in Manhattan is now open. The Osher Lifelong Learning Institute at the University of Kansas has teamed up with Kansas State University to bring to the Manhattan area the diverse content, innovative learning opportunities and quality faculty that promote lifelong learning in the community. The program in Manhattan is coordinated by UFM Community Learning Center.

The Osher Institute offers courses for participants age 50 and over that stress the joy of learning. Instructors are carefully selected for their expertise, a passion for the topic and a love of teaching. Courses generally meet weekly for two hours over a three-week period and require no homework, out-of-class preparation or testing.

UFM Coordinator, Charlene Brownson, will be at Meadowlark Hills at 10 a.m. Monday, June 6, in the KSU Classroom for spring Osher registration sign up. To enroll please do one of the following:

- Complete the form included in the summer catalog
- Call KU Osher toll-free (877) 404-5823 or (785) 864-5823
- Visit the web site www.osher.ku.edu.

Meadowlark Hills residents and Passport Members fees for the classes have been prepaid.

Japanese-American Internment Camps

Tuesday, June 7, at 5:45 p.m.

This Osher Class will explore the camps, incorporating the artwork of Dr. Roger Shimomura of Lawrence currently on display at the Beach Museum of Art. The class will discuss living conditions of the camps, attitudes of the guards and the four Supreme Court decisions that upheld the internments. Additionally, the class will salute the heroism of the Japanese-American soldiers during WWII and their liberation of the Dachau Concentration Camp.

Join Russ Hutchins, as he presents over the Japanese-American Internment Camps from 6 to 8 p.m. Tuesday, June 7, at the Beach Museum of Art. Second and third classes will be Tuesday, June 14, and Tuesday, June 21, at the same time and location as the first class.

Transportation will depart from the Village Entrance at 5:45 p.m. Please sign up in the Blue Book located at the Hospitality Desk.

June Focus Group

Thursday, June 9, at 10 a.m.

The Focus Group Scheduled for June will highlight another great staff member at 10 a.m. Thursday, June 9, in the KSU Classroom. The staff attendee for the June Focus Group will be Development Director, Becky Fitzgerald!

Manhattan Municipal Band

Tuesday, June 7, at 7 p.m.

Manhattan Municipal Band is sharing their music for free and is wanting you there! Bring your lawn chairs and enjoy the music of the Municipal Band on Tuesdays, starting June 7. The event begins at 7:30 p.m. at Larry Norvell Band Shell at City Park. Transportation will depart at 7 p.m. from the Village Entrance and costs \$3 per person.

Vespers Services

Sunday, June 5, at 7 p.m.

The Vespers service, led by Reverend John Wright from First United Methodist Church, will be at 7 p.m. Sunday, June 5, in the Community Room. All are welcome.

Beach Museum of Art Discussion

Wednesday, June 8, at 6:30 p.m.

Join Kim Richards from the Beach Museum of Art at 6:30 p.m. Wednesday, June 8, in the KSU Classroom to learn and discuss artist Shirley Smith. All residents who are interested are invited to participate.

Speedy PD Art Workshops

Individuals with Parkinson's disease are invited to attend art workshops to make the age-group awards for the 8th Annual Speedy PD Race for Parkinson's. Kathrine Schlageck, the Marianna Kistler Beach Museum Education Director, will lead the classes and provide the materials and inspiration for each event. The following are dates and times for the art workshops in the KSU Classroom:

- Wednesday, June 15, from 1:30 to 3 p.m.
- Tuesday, July 12, from 11 a.m. to 12:30 p.m.
- Tuesday, July 19, from 11 a.m. to 12:30 p.m.
- Tuesday, August 9, from 11 a.m. to 12:30 p.m.

Questions? Please contact Michelle Haub, Parkinson's Program Leader at (785) 323-3899 or via email michelle.haub@meadowlark.org.

UPCOMING EVENTS & ANNOUNCEMENTS

DRINK SPECIAL



June 6 to June 11 Hemingway Daiquiri

1 1/5 oz. White Rum
1/2 oz. Grape Juice
1/2 oz. Lime Juice
1/4 oz. Simple Syrup
1/2 oz. Luxardo

\$3.75

Pop-Up Boutique

Sunday, June 5, from 10 a.m. to 12 p.m.

You are all invited to Sherry Smith's, Lyle Household Coordinator, LuLaRoe Launch Pop-Up Boutique from 10 a.m. to 12 p.m. Sunday, June 5, in the Living Room. There will be a huge selection of skirts, dresses, leggings and tops in women's sizes XXS — 3xL and kids sizes 2T to 14. Come to browse, try on and take home your new clothes!

Memory Activities Class

Wednesday, June 8 at 10 a.m.

Memory Activities Class (MAC) focuses on education, activities and discussions about memory and cognition in an informal setting. All levels of abilities are welcome and snacks are provided. This group will meet at 10 a.m. Wednesday, June 8, in the KSU Classroom.

Video Worship Service

Wednesday, June 8, at 4 p.m.

You are invited to watch a televised worship sermon at 4 p.m. Wednesday, June 8, in the Living Room. All are welcome.

French & Indian War

Wednesday, June 8, at 6:30 p.m.

This Osher Class will highlight the French empire, the fate of Native Americans west of the Appalachians and the attitude of loyal colonists toward Britain and how it was changed.

The next class is from 6:30 to 8:30 p.m. Wednesday, June 8, in the Community Room. The third class will be Wednesday, June 15, at the same time and location.

Arts in the Park

The City of Manhattan Parks and Rec is once again hosting its annual Arts in the Park summer concert series! Arts in the Park is a summer concert series that brings live music and entertainment to the public every Friday throughout the summer. Enjoy a nice relaxing night of bluegrass, party songs, folk, country and more!

Shows begin at 8 p.m. at the Larry Norvell Band Shell in City Park unless otherwise noted. Friday, July 29, "Recess Monkey" will be the only event that will begin at 7 p.m. rather than 8 p.m.

Transportation is available and will cost \$3, but admission is free! Transportation will depart from the Village Entrance at 7:30 p.m.

Please register in the Blue Book located at the Hospitality Desk for transportation and to attend any of the following fun events!

2016 Arts in the Park Schedule

- **June 10** — Artageous! The interactive Art and Music Experience
- **June 17** — The Howlin' Brothers: Nashville-based blues and bluegrass band
- **June 24** — Wayne Goins Jazz Combo
- **July 1** — Betty O. and the Exceptions: The best party songs of all time!
- **July 8** — Muzizi Reggae
- **July 15** — Butch Parnell of Runaway Dorothy: mining folk, country and alt-country
- **July 22** — The Good Lovelies: female folk trio
- **July 29** (at 7 p.m.) — Recess Monkey: this kids music band isn't just for kids!
- **August 5** — Groovement: 7-piece funk-rock band

Walmart/Dillon's

Shopping Trip



Take advantage of the complimentary transportation to local shopping centers. Transportation goes to the following locations: Walmart and Dillons.

The next trip departs at 10 a.m. Wednesday, June 8, from the Village Entrance. Please sign up in the Blue Book to register for transportation.

UPCOMING EVENTS & ANNOUNCEMENTS

Exercise Cancellations

The following exercise classes are canceled on the date listed below:

- Steady Yourself — Tuesday, June 7
- Fight 2 Fight PD — Wednesday, June 8

Transportation to Jazz in June — Hale Library Night Event

Friday, June 10, at 7 p.m.

The event, “Jazz in June” begins at 7:30 p.m. Friday, June 10, at Hale Library.

Transportation is available and will depart from the Village Entrance at 7 p.m. Cost is \$3 per person. Please sign up in the Blue Book located at the Hospitality Desk to attend.

FOUNDATION NEWS

In Honor of Those Living & Passed May 2016

In Memory of:

<i>Imogene Lamb Bolls</i>	<i>Vernon Larson</i>
<i>John Blythe</i>	<i>Nelson Love</i>
<i>George Carpenter</i>	<i>John & Phyllis Mann</i>
<i>Rosemary Carroll</i>	<i>Parents/sisters & brothers of</i>
<i>John & Diane Dollar</i>	<i>Kathleen Newell</i>
<i>Leon Edmunds</i>	<i>Linda Owens</i>
<i>Irma Jean Fallon</i>	<i>Kermit Peterson</i>
<i>Karen Filbert</i>	<i>Mary Roberts</i>
<i>Tom Grubb</i>	<i>Frances Scully</i>
<i>Jack Hartman</i>	<i>Robert Sloan</i>
<i>Richard Jepsen</i>	<i>Dan Upson</i>
<i>Jenny Kellogg</i>	<i>Margaret Walker</i>
	<i>Jim Williams</i>

In Honor of:

Newton Cox
Richard Fenwick
Cora Ruth Miles
Dr. Jane Westfall
Margaret Wheat

Meadowlark Hills Foundation has gratefully accepted gifts in May benefitting the Good Samaritan Fund and the Parkinson's Program.

Texas adventure promises holiday sights and sounds

Submitted by Becky Fitzgerald

Holiday LIGHTS! Bring your CAMERAS! A variety of ACTION awaits when the Meadowlark Hills Travelers visit Oklahoma City and the Grapevine, Texas, area in early December. A five-day/four-night tour planned for Nov. 30 through Dec. 4 has been designed to put you in the holiday spirit by enticing your five senses. There will be twinkling lights and holiday exhibits to see, live performances to hear, locally made food and wine to smell and taste – Grapevine is aptly named! – and artisan-made items to touch.

While in Grapevine, known as the Christmas Capital of Texas, we'll enjoy a Christmas Murder Mystery Dinner at Texas Star Theatre; a guided bus tour of Historic Downtown Grapevine; the amazing ICE! Exhibit at the Gaylord Texan resort, and more. Free time to pursue downtown's shops and galleries has been built into the itinerary.

In addition, we'll visit Myriad Botanical Gardens and Crystal Bridge Tropical Conservatory in Oklahoma City and the Stockyards in Fort Worth plus drive through a 2-mile-long display of dazzling lights in Grand Prairie, Texas.

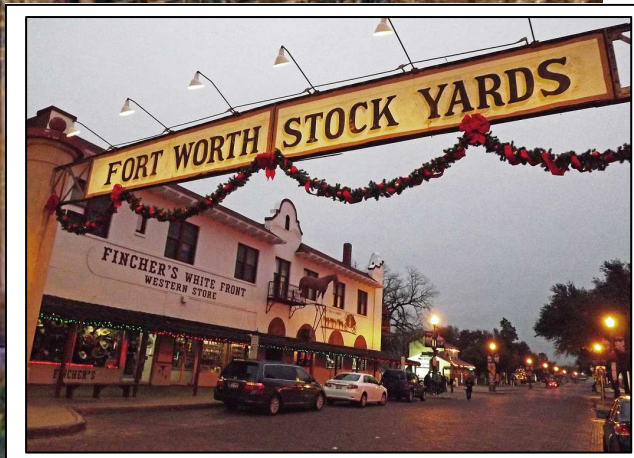
What's a holiday trip without time for Christmas shopping? Our hotel in Texas is Hyatt Place at Grapevine Mills, an indoor mall with 180 options for shopping, entertainment and eating. An afternoon has been set aside for travelers who'd enjoy some retail therapy. (*See Page 9 for photos of attractions, etc.*)

Keeping the comfort of our travelers in mind, the first day of the trip features a lunch stop and an attraction stop prior to checking in to the Embassy Suites just south of Oklahoma City. We'll be in plenty of time for the complimentary Manager's Reception that evening. The next morning, we'll enjoy a breakfast buffet at the hotel before departing for Grapevine, a short three hours away.

With a minimum of 25 travelers, cost is \$1,358 for single occupancy, \$1,038 per person for double occupancy and \$958 per person for triple occupancy. With a minimum of 30 travelers, the cost per person decreases, so please share this opportunity with your friends. A deposit of \$200 per person is due with your registration. Please see Monte Spiller or ask at the Hospitality Desk for a registration form.

The trip fee includes motor coach transportation; hotel accommodation and baggage handling for four nights; 12 meals; all attractions and guides' gratuity. Bus driver's gratuity is not included. Questions? Please contact Monte at 323-3801.

Gaylord Texan interior
during the holiday season



Christmas in Texas

Wednesday, Nov. 30 ~ Sunday, Dec. 4, 2016

Featuring Grapevine, the Christmas Capital of Texas, along with attractions/tours in Grand Prairie & Fort Worth plus Oklahoma City

Tour features

- ~ 1 night at Embassy Suites in Norman, Okla.
- ~ 3 nights at Hyatt Place near Grapevine Mills Mall
- ~ Myriad Gardens & Crystal Bridge, Oklahoma City
- ~ Christmas Murder Mystery & Dinner at Texas Star Theater
- ~ Prairie Lights tour & Holiday Village
- ~ ICE! Exhibit at Gaylord Texan
- ~ Christmas in the Stockyards & Cattle Drive
- ~ Downtown Grapevine shops, wineries & galleries
- ~ Shopping at Grapevine Mills
- ~ 4 breakfasts, 5 lunches, 3 dinners, all inclusive



Hyatt Place suite with two beds

COST: About \$1000 per person with double occupancy, depending on number of travelers

PRAIRIE★STAR RESTAURANT

Monday to Saturday, 10:30 to 8 p.m.
Sunday, 10:30 a.m. to 7 p.m.

June 5 - June 10

Includes beverage, starter and dessert.

The restaurant can accept up to four reservations per time, depending on party size. Reservations can be made in person or by calling 323-3820

SUNDAY	June 5 ~ Lunch \$10	Dinner \$11
	Beef Stroganoff with Noodles Vegetable of the Day	Chicken & Dumplings Vegetable of the Day
MONDAY	June 6 ~ Lunch \$10	Dinner \$12
	Grilled Lemon Thyme Chicken Wild Rice Choice of Vegetable	Sweet & Sour Pork Steamed Rice Vegetable of the Day
TUESDAY	June 7 ~ Lunch \$8	Dinner \$12
	Fajita Bar (does not include drink, starter or dessert)	Braised Chicken in Plum Sauce Roasted Ranch Red Potato Vegetable of the Day
WED.	June 8 ~ Lunch \$10	Dinner \$13
	Breaded Pork Sandwich Potato Salad Choice of Vegetable	Sautéed Shrimp Rigatoni with Peppers, Mushrooms & Garlic in Tomato Cream Sauce Garlic Toast Vegetable of the Day
THURS.	June 9 ~ Lunch \$9	Dinner \$12
	Salad Bar (does not include drink, starter or dessert)	Turkey Loaf Au Gratin Potatoes Vegetable of the Day
FRIDAY	June 10 ~ Lunch \$9	Dinner \$12
	Tamale Pie Mexican Rice Black Beans	Sesame Crusted Pork Tenderloin Fried Rice Vegetable of the Day
SAT.	June 11 ~ Lunch \$10	Dinner \$15
	BBQ Brisket Sandwich Coleslaw French Fries	Steak Night Baked Potato Vegetable of the Day

*You may substitute an extra vegetable for the starch on any special for no additional charge.

Grosh Cinema Movies

Sunday, June 5 - Saturday, June 11

Show Times: 1, 4 and 7 p.m., Monday – Saturday
2 p.m. and 6 p.m., Sunday

Sunday, June 5 – David and Goliath (2015)

Against a vast enemy, they didn't stand a chance. Until one underdog rose to the challenge. This is how history is made.

Co-Starring: Miles Sloman, Jerry Sokolosky & Paul Hughes

Rated PG; 1 hr. 31 min.

Monday, June 6 – Fever Pitch (2005)

Everything's going great between baseball fanatic Ben and his new girlfriend, Lindsay—until spring rolls around and the Red Sox season begins.

Co-Starring: Drew Barrymore, Jimmy Fallon & Jason Spevack

Rated PG-13; 1 hr. 43 min.

Tuesday, June 7 – Norma Rae (1979) **Resident Request*

Sally Field stars as Norma Rae Webster, a plucky millworker who fights for unionization at her factory and discovers the latent power within herself.

Co-Starring: Sally Field, Beau Bridges & Ron Leibman

Rated PG; 1 hr. 58 min.

Wednesday, June 8 – Trouble with the Curve (2012) **Resident Request*

Slowed by age and failing eyesight, crack baseball scout Gus Lobel takes his grown daughter along as he checks out the final prospect of his career.

Co-Starring: Clint Eastwood, Amy Adams & John Goodman

Rated PG-13; 1 hr. 51 min.

Thursday, June 9 – The Man Who Came to Dinner (1941)

Arrogant lecturer Sheridan Whiteside overstays his welcome in an Ohio family's home in this rollicking adaptation of the hit Broadway play. Whiteside slips on the ice on the way to dinner and finds himself on bed rest in his host's home.

Co-Starring: Bette Davis, Ann Sheridan & Monty Woolley

Not Rated; 1 hr. 53 min.

Friday, June 10 – Unbroken (2014)

This inspiring tale of survival is based on the real-life experiences of Louis Zamperini, an American pilot held by the Japanese during World War II.

Co-Starring: Jack O'Connell, Miyavi & Domhnall Gleeson

Rated PG-13; 2 hrs. 17 min.

Saturday, June 11 – Always (1989)

After a firefighter pilot dies, his spirit guides the young flyer who falls for his girl. Even an angel can be jealous.

Co-Starring: Richard Dreyfuss, Holly Hunter & Brad Johnson

Rated PG; 2 hrs. 2 min.

This Week's Opportunities June 5 - June 11

SUNDAY • JUNE 5

Breakfast at Verna Belle's—Omelets with Fruit

9:00 a.m. ~ Miller Worship Service, MFR
10:00 a.m. ~ Worship Service, CR
10:00 a.m. ~ Lu La Roe Clothing Show, LR
2:00 p.m. ~ Wroten Worship Service, WL
2:30 p.m. ~ Pond Ride, VE
7:00 p.m. ~ Vespers, Rev. John Wright from First United Methodist, CR

MONDAY • JUNE 6

Trash pick-up day

Breakfast at Verna Belle's—Biscuits & Sausage Gravy

8:30 a.m. ~ IL Resident Council, KSU CL
9:30 a.m. ~ Town Meeting, CR
10:00 a.m. ~ Pond Ride, VE
10:00 a.m. ~ Osher Informational Meeting, KSU CL
11:00 a.m. ~ St. Luke's Communion, LR
11:00 a.m. ~ Sit & Be Fit, CR
12:00 p.m. ~ Weights 101, CR
1:00 p.m. ~ Blood Pressure Clinic, GR
1:10 p.m. ~ Meditation Group, TR
1:15 p.m. ~ Parkinson's Exercise Class, CR
1:30 p.m. ~ Ladies Pool Table Time, BP
2:15 p.m. ~ Parkinson's Voice Class, KSU CL
2:30 p.m. ~ Pond Ride, VE
5:30 p.m. ~ Tuttle Creek Supper, MR
7:00 p.m. ~ Community Bingo, CR

TUESDAY • JUNE 7

Breakfast at Verna Belle's—Breakfast Sandwich with Fruit

7:30 a.m. ~ 1st Pres. Men's Bible Study, LR
10:00 a.m. ~ Pond Ride, VE
10:30 a.m. ~ Reality Check, TR
11:15 a.m. ~ Chair Yoga, CR
12:00 p.m. ~ Seven Dolors Book Discussion, LR
12:00 p.m. ~ Kimball Luncheon, MR
1:00 p.m. ~ Tai Chi, CR
2:00 p.m. ~ Writing Group, LR
2:30 p.m. ~ Pond Ride, VE
3:00 p.m. ~ Coffee Corner, CR
3:30 p.m. ~ Ambassadors Committee Meeting, CON
4:00 p.m. ~ Newspaper & Bible, LR

WEDNESDAY • JUNE 8

Breakfast at Verna Belle's—Breakfast Burrito with Fruit

9:00 a.m. ~ Building and Grounds Meeting, LR
9:30 a.m. ~ Seated Strength, CR
10:00 a.m. ~ Pond Ride, VE
10:00 a.m. ~ Walmart/Dillons Shopping Trip, VE
10:00 a.m. ~ Worship Service, LR
10:00 a.m. ~ Memory Activities Class, KSU CL
10:20 a.m. ~ Weights 101, CR
11:00 a.m. ~ Sit & Be Fit, CR
12:00 p.m. ~ 2nd Men's Club Luncheon, LR

12:00 p.m. ~ Beginner Tai Chi, CR
1:10 p.m. ~ Meditation Group, TR
1:30 p.m. ~ Pitch, GR
1:30 p.m. ~ Collins Worship Service, CH
2:30 p.m. ~ Pond Ride, VE
3:00 p.m. ~ Call Hall Ice Cream, KR
4:00 p.m. ~ Video Worship Service, LR
6:30 p.m. ~ Osher Class: The French & Indian War, CR
6:30 p.m. ~ Beach Museum of Art Discussion, KSU CL

THURSDAY • JUNE 9

Breakfast at Verna Belle's—Biscuits & Sausage Gravy

9:00 a.m. ~ Messenger Ladies, CON
10:00 a.m. ~ Meadowlark Bible Study, CON
10:00 a.m. ~ Pond Ride, VE
10:00 a.m. ~ Great Decisions, LR
10:00 a.m. ~ Resident Focus Group, KSU CL
10:30 a.m. ~ Steady Yourself, CR
11:15 a.m. ~ Chair Yoga, CR
12:30 p.m. ~ Manhatters Ladies Luncheon, MR
1:00 p.m. ~ Blood Pressure Clinic, GR
2:30 p.m. ~ Pond Ride, VE
7:00 p.m. ~ IL Bingo, CR

FRIDAY • JUNE 10

Breakfast at Verna Belle's—Waffle or Pancake

9:30 a.m. ~ Seated Strength, CR
10:00 a.m. ~ Pond Ride, VE
10:20 a.m. ~ Weights 101, CR
11:00 a.m. ~ Sit & Be Fit, CR
1:00 p.m. ~ Hand & Foot Card Games, GR
1:15 p.m. ~ Parkinson's Exercise Class, CR
1:15 p.m. ~ Parkinson's Care Partners Support Group, LR
2:30 p.m. ~ Pond Ride, VE
7:00 p.m. ~ Resident Program: Craig Plotner, CR

SATURDAY • JUNE 11

Breakfast at Verna Belle's—Omelets with Fruit

9:00 a.m. ~ Fit 2 Fight PD, PS Patio
9:30 a.m. ~ Painting for Fun, KSU CL
9:30 a.m. ~ LWV Legislative Wrap-up Public Meeting, CR
10:00 a.m. ~ Pond Ride, VE
2:30 p.m. ~ Pond Ride, VE

ROOM ABBREVIATIONS

BP, Billiards Parlor	LB, Library
CH, Collins House	LR, Living Room
CR, Community Room	MFR, Miller Friendship Rm
CON, Conference Room	MR, Manhattan Room
FC, Fitness Center	MS, Miller Spa
GR, Game Room	PS, Prairie Star Restaurant
GC, Grosh Cinema	TR, Tranquility Room
KR, Kansas Room (Pub)	VE, Village Entrance
KSU CL, KSU Classroom	WL, Wroten Library